

LaserTop

Laser marking
station

LasERTOP

Lasertop

This flexible and ergonomic workstation incorporates laser technology and guarantees professional marking on all your workpieces.

Turnkey installation

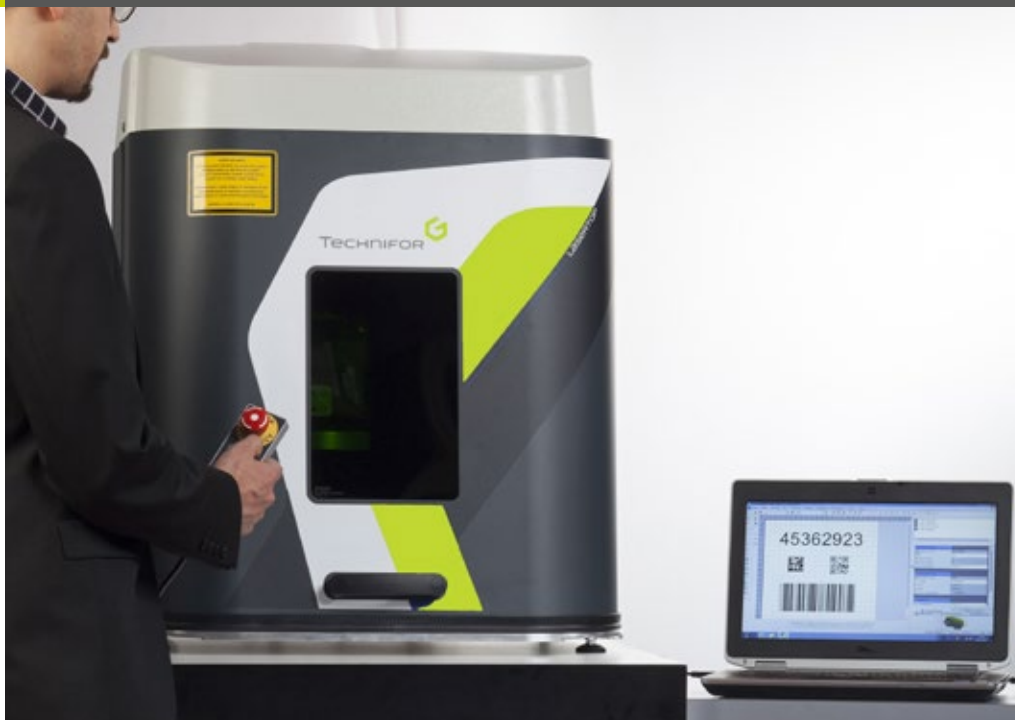
Compact and quiet, the Lasertop can be installed in total safety on a desk or work table.

Plug and go - to start marking, simply connect it to the laser control unit and plug in.

Maximum safety

Class 1 certified (door closed), protection from all laser emissions is guaranteed.

It is completely safe in use thanks to a full Interlock system, a door equipped with sensors and an anti-pinch system.



OPTIMUM COMFORT AND RAPID ADJUSTMENT

- **Light counterbalanced door:** its linear opening on 3 sides affords effortless access to the working area.
- **LED lighting embedded with the marking head:** the marking area is perfectly illuminated.
- **Vertical axis linked to a display and red positioning assistance pointer:** makes for rapid adjustment.
- **Industrial tooling plate:** fast, secure, precise fixturing of parts or tooling.
- **Remote control using magnetic control technology:** all functions are right at your fingertips.

ROBUSTNESS

The rigidity of the casing and frame, combined with high-performance mechanical and electrical components, guarantee the station's long service life.

“ The spacious working chamber offers maximum flexibility in terms of workpiece size and weight. ”

Characteristics

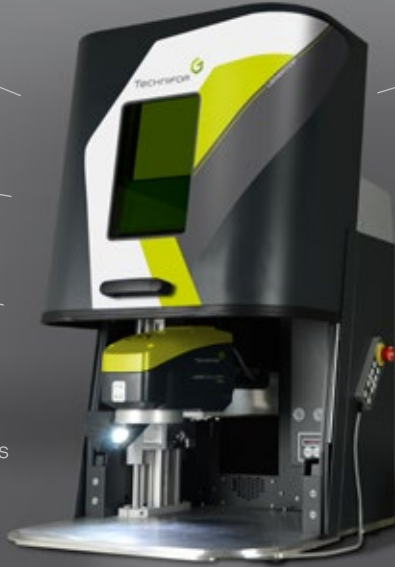
+ Available with all lasers in the Technifor range: Fibre, YVO4, Green, CO₂

Casing and frame
in painted steel

Large viewing window
(180 x 280 mm)

Optical tightness

Large working area
with 27 M6 fixing holes
on table



U-shaped door:
opening upwards
by up to 420 mm

Motorised Z axis
300 mm travel
(optional)

Magnetic remote
control

DB37 connector:
PLC control and
integration into an
automated system

Save on the time and costs involved in the design of a station for your laser:

The Lasertop is Class 1 certified (door closed) and can accept workpieces up to:

- 545 mm deep
- 558 mm wide
- 365 mm high (depending on focal length)

Full range of accessories:

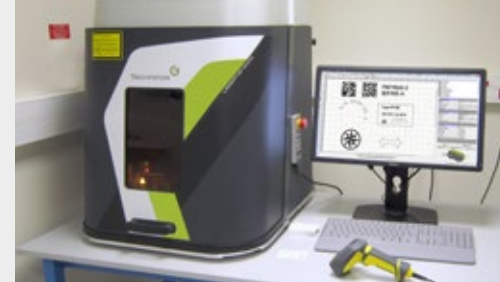
- Motorised door
- Digital Z axis
- Workpiece rotation system
- Door locking system
- Focus aid
- Table protection mat
- EZ Fix universal clamp
- Fume extractor
- 1D and 2D code reader

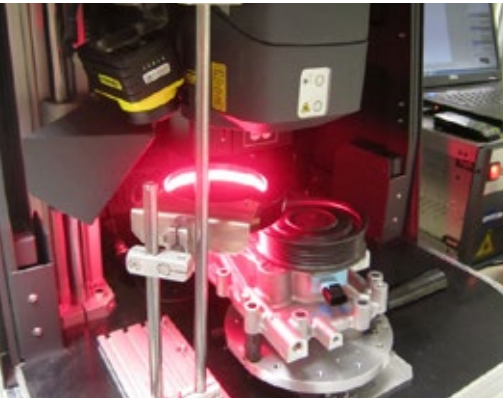
SIMPLE TO USE

Controlled by the intuitive Lasertrace software, **the Lasertop** is the ideal solution for short and medium batches: the changeover from one workpiece to the next is easy and straightforward.

OPTIMISED PRODUCTION

- **Connected** to a barcode reader or database, **the Lasertop** becomes a semi-automatic production tool.
- **Upgradeable**, a variety of options are available for customisation. Full or partial automatic door opening offers a significant productivity gain for long runs.
- **Flexible**, the Lasertop adapts perfectly to your production constraints or to the size of the workpieces to be marked: with the addition of a plate feeder, turntable, support table, scanning camera etc.





- **Marking of short and medium runs:** Identify batches and unit workpieces by logo, serial number, date, 2D code etc.
- **Matrix marking:** Mark a run of workpieces in a single step.
- **Versatile marking:** Identify small and bulky workpieces, mark on a variety of materials and finishes.
- **Complete traceability solution:** marking, reading, communication with your databases.

Automotive
Aeronautics
Plastics
Medical
Plumbing

Cutlery
Business gifts
Electronics
Electrics
Semi-conductors

Mechanics
Locks and keys
Nameplates
...



Technifor UK
Unit 3 Trojan Business Centre
Tachbrook Park Drive
LEAMINGTON SPA
Warwickshire CV34 6RH
Tel : (44) 01926 88 44 22
Fax : (44) 01926 88 31 05
sales@ltd.technifor.com