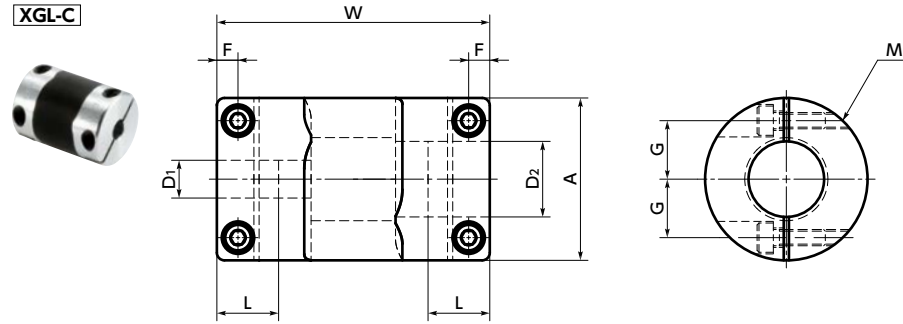


# XGL-C Flexible coupling - High - gain rubber type - Long type

[WEB Selection Tool](#)
[WEB CAD Download](#)
[Zero Backlash](#)
[High gain supported](#)
[High torque](#)
[Vibration absorption](#)



## Dimensions

Unit : mm

| Part Number    | A  | L    | W  | F    | G     | M    | Screw Tightening Torque (N·m) |
|----------------|----|------|----|------|-------|------|-------------------------------|
| <b>XGL-15C</b> | 15 | 6.5  | 30 | 2.15 | 5     | M1.6 | 0.25                          |
| <b>XGL-19C</b> | 19 | 7.7  | 34 | 2.65 | 6.5   | M2   | 0.5                           |
| <b>XGL-25C</b> | 25 | 9.5  | 42 | 3.25 | 9     | M2.5 | 1                             |
| <b>XGL-30C</b> | 30 | 11   | 42 | 4    | 11    | M3   | 1.5                           |
| <b>XGL-34C</b> | 34 | 12   | 44 | 4    | 12.25 | M3   | 1.5                           |
| <b>XGL-39C</b> | 39 | 15.5 | 55 | 4.5  | 14.5  | M4   | 2.5                           |

| Part Number    | Standard Bore Diameter D1-D2 |                   |                   |          |         |         |          |         |
|----------------|------------------------------|-------------------|-------------------|----------|---------|---------|----------|---------|
| <b>XGL-15C</b> | 3 - 5                        | 5 - 5             | 5 - 6             |          |         |         |          |         |
| <b>XGL-19C</b> | 4 - 5<br>6.35 - 8            | 5 - 5<br>8 - 8    | 5 - 6             | 5 - 7    | 5 - 8   | 6 - 6   | 6 - 6.35 | 6 - 8   |
| <b>XGL-25C</b> | 5 - 8<br>10 - 10             | 6 - 8<br>10 - 12  | 6 - 10            | 6.35 - 8 | 8 - 8   | 8 - 10  | 8 - 11   | 8 - 12  |
| <b>XGL-30C</b> | 8 - 8<br>10 - 14             | 8 - 10<br>11 - 12 | 8 - 11<br>12 - 14 | 8 - 12   | 8 - 14  | 8 - 15  | 10 - 10  | 10 - 11 |
| <b>XGL-34C</b> | 8 - 8<br>14 - 15             | 8 - 10            | 8 - 12            | 8 - 14   | 10 - 11 | 10 - 14 | 11 - 12  | 12 - 14 |
| <b>XGL-39C</b> | 10 - 10                      | 10 - 12           | 10 - 14           | 12 - 14  | 14 - 15 | 15 - 19 |          |         |

- All products are provided with hex socket head cap screw.
- Recommended dimensional allowances of applicable shaft diameter are h6 and h7.
- In case of mounting on D-cut shaft, be careful about the position of the D-cut surface of the shaft. ➔ P.xxxx

## Performance

| Part Number    | Max. Bore Diameter (mm) | Rated*1 torque (N·m) | Max.*1 torque (N·m) | Max. Rotational Frequency (min <sup>-1</sup> ) | Moment*2 of Inertia (kg·m <sup>2</sup> ) | Static Torsional Stiffness (N·m/rad) | Max. Lateral Misalignment (mm) | Max. Angular Misalignment (°) | Max. Axial Misalignment (mm) | Mass*2 (g) |
|----------------|-------------------------|----------------------|---------------------|------------------------------------------------|------------------------------------------|--------------------------------------|--------------------------------|-------------------------------|------------------------------|------------|
| <b>XGL-15C</b> | 6                       | 1.1                  | 2.2                 | 42000                                          | 3.3×10 <sup>-7</sup>                     | 32                                   | 0.15                           | 1.5                           | ±0.2                         | 11         |
| <b>XGL-19C</b> | 8                       | 2.1                  | 4.2                 | 33000                                          | 9.7×10 <sup>-7</sup>                     | 77                                   | 0.15                           | 1.5                           | ±0.2                         | 19         |
| <b>XGL-25C</b> | 12                      | 4                    | 8                   | 25000                                          | 3.5×10 <sup>-6</sup>                     | 130                                  | 0.15                           | 1.5                           | ±0.2                         | 38         |
| <b>XGL-30C</b> | 15                      | 6.3                  | 12.6                | 21000                                          | 7.3×10 <sup>-6</sup>                     | 200                                  | 0.2                            | 1.5                           | ±0.3                         | 53         |
| <b>XGL-34C</b> | 16                      | 8                    | 16                  | 18000                                          | 1.3×10 <sup>-5</sup>                     | 280                                  | 0.2                            | 1.5                           | ±0.3                         | 73         |
| <b>XGL-39C</b> | 20                      | 13.5                 | 27                  | 16000                                          | 2.8×10 <sup>-5</sup>                     | 450                                  | 0.2                            | 1.5                           | ±0.3                         | 117        |

\*1 Correction of rated torque and max. torque due to load fluctuation is not required. However, if ambient temperature exceeds 30°C, be sure to correct the rated torque and max. torque with temperature correction factor shown in the following table. The allowable operating temperature of **XGL-C** is -20°C to 80°C.

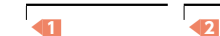
\*2 These are values with max. bore diameter.

### • Ambient Temperature / Temperature Correction Factor

| Ambient temperature | Temperature correction factor |
|---------------------|-------------------------------|
| -20°C to 30°C       | 1.00                          |
| 30°C to 40°C        | 0.80                          |
| 40°C to 60°C        | 0.70                          |
| 60°C to 80°C        | 0.55                          |

### • Part number specification

**XGL-15C-5-5**



[Additional Keyway at Shaft Hole ➔ P.xxxx](#)
[Cleanroom Wash & Packaging ➔ P.xxxx](#)
[Change to Stainless Steel Screw ➔ P.xxxx](#)