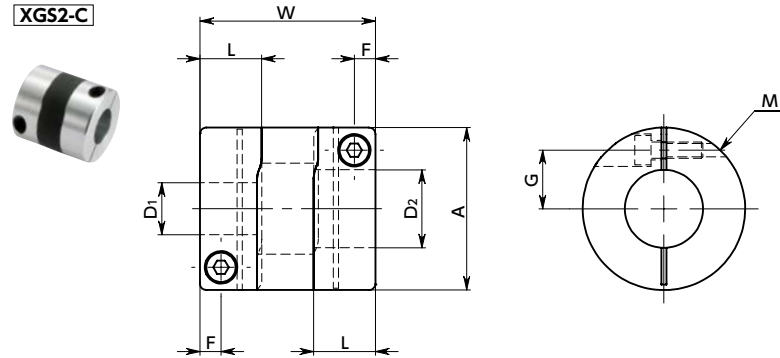


XGS2 Flexible coupling - High - gain rubber type - Short type Additional Size Patent Pending

[WEB Selection Tool](#)
[WEB CAD Download](#)
[Zero Backlash](#)
[High gain supported](#)
[High torque](#)
[High Rigidity](#)
[Vibration absorption](#)



Dimensions

Unit : mm

Part Number	A	L	W	F	G	M	Screw Tightening Torque (N·m)
XGS2-15C	15	6.5	18	2.15	5	M1.6	0.25
XGS2-19C	19	7.7	20	2.65	6.5	M2	0.5
XGS2-25C	25	9.5	27	3.25	9	M2.5	1
XGS2-27C	27	9.5	27	3.25	10	M2.5	1
XGS2-30C	30	11	30	4	11	M3	1.5
XGS2-34C	34	12	35	4	12.25	M3	1.5
XGS2-39C	39	15.5	40	4.5	14.5	M4	2.5

Part Number	Standard Bore Diameter D1-D2									
	D1-D2									
XGS2-15C	3-5	3-6	4-4	4-5	4-6	4.5-5	5-5	5-6	6-6	
XGS2-19C	4-5 8-8	5-5	5-6	5-7	5-8	6-6	6-6.35	6-7	6-8	6.35-8
XGS2-25C	5-6 8-10	5-8 8-11	6-6 8-12	6-8 10-10	6-10 10-12	6-11 12-12	6-12	6.35-8	6.35-10	8-8
XGS2-27C	5-6 8-10	5-8 8-11	5-14 8-12	6-6 8-14	6-8 10-10	6-10 10-12	6-11 10-14	6-12 12-12	6-14 12-14	8-8 14-14
XGS2-30C	8-8 10-15	8-10 11-12	8-11 12-12	8-12 12-14	8-14 12-15	8-15 14-14	10-10 14-15	10-11 15-15	10-12	10-14
XGS2-34C	8-8 10-15	8-10 11-11	8-11 11-12	8-12 12-12	8-14 12-14	8-15 12-15	10-10 14-14	10-11 14-15	10-12 15-15	10-14 16-16
XGS2-39C	10-10 12-20	10-12 14-14	10-14 14-15	10-15 14-16	10-16 15-15	12-12 15-16	12-14 15-19	12-15 16-16	12-16 17-17	12-19 20-20

- All products are provided with hex socket head cap screw.
- Recommended dimensional allowances of applicable shaft diameter are h6 and h7.
- In case of mounting on D-cut shaft, be careful about the position of the D-cut surface of the shaft. ➔ P.xxxx

Performance

Part Number	Max. Bore Diameter (mm)	Rated*1 torque (N·m)	Max. *1 torque (N·m)	Max. Rotational Frequency (min ⁻¹)	Moment*2 of Inertia (kg·m ²)	Static Torsional Stiffness (N·m/rad)	Max. Lateral Misalignment (mm)	Max. Angular Misalignment (°)	Max. Axial Misalignment (mm)	Mass*2 (g)
XGS2-15C	6	0.5	1	42000	2.1×10 ⁻⁷	64	0.15	1.5	±0.2	7
XGS2-19C	8	0.8	1.6	33000	5.9×10 ⁻⁷	170	0.15	1.5	±0.2	12
XGS2-25C	12	2.3	4.6	25000	2.4×10 ⁻⁶	290	0.15	1.5	±0.2	24
XGS2-27C	14	2.3	4.6	23000	3.2×10 ⁻⁶	290	0.15	1.5	±0.2	28
XGS2-30C	15	3.3	6.6	21000	5.2×10 ⁻⁶	430	0.2	1.5	±0.3	38
XGS2-34C	16	5.5	11	18000	1.1×10 ⁻⁵	800	0.2	1.5	±0.3	61
XGS2-39C	20	7	14	16000	2.1×10 ⁻⁵	930	0.2	1.5	±0.3	90

*1 Correction of rated torque and max. torque due to load fluctuation is not required. However, if ambient temperature exceeds 30°C, be sure to correct the rated torque and max. torque with temperature correction factor shown in the following table. The allowable operating temperature of XGS2-C is -10°C to 120°C.

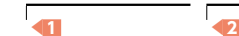
*2 These are values with max. bore diameter.

• Ambient Temperature / Temperature Correction Factor

Ambient temperature	Temperature correction factor
-10°C to 30°C	1.00
30°C to 40°C	0.80
40°C to 60°C	0.70
60°C to 120°C	0.55

• Part number specification

XGS2-34C-11-12



[Additional Keyway at Shaft Hole ➔ P.xxxx](#)
[Cleanroom Wash & Packaging ➔ P.xxxx](#)
[Change to Stainless Steel Screw ➔ P.xxxx](#)