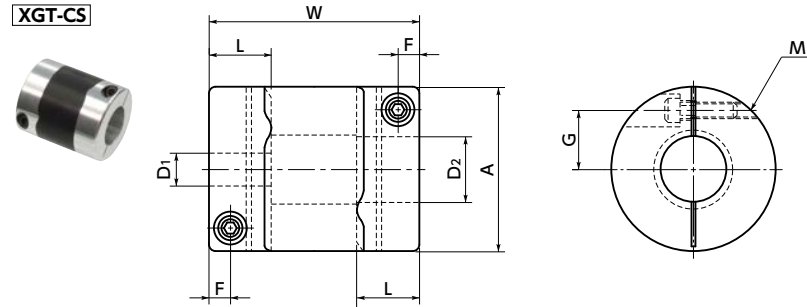


XGT-CS Flexible coupling - High-gain rubber type - Single clamp type **NEW**

[WEB Selection Tool](#)
[WEB CAD Download](#)
[Zero Backlash](#)
[High gain supported](#)
[High torque](#)
[Vibration absorption](#)



Dimensions

Unit : mm

Part Number	A	L	W	F	G	M	Screw Tightening Torque (N·m)
XGT-15CS	15	6.5	23	2.15	5	M1.6	0.25
XGT-19CS	19	7.7	26	2.65	6.5	M2	0.5
XGT-25CS	25	9.5	32	3.25	9	M2.5	1
XGT-27CS	27	9.5	32	3.25	10	M2.5	1
XGT-30CS	30	11	36	4	11	M3	1.5
XGT-34CS	34	12	38	4	12.25	M3	1.5
XGT-39CS	39	15.5	48	4.5	14.5	M4	2.5
XGT-44CS	44	15	48	4.75	16	M4	2.5
XGT-56CS	56	19.5	60	5.5	20	M5	7

Part Number	Standard bore diameter									
	D1-D2									
XGT-15CS	3-5	3-6	4-4	4-5	4-6	4.5-5	5-5	5-6	6-6	
XGT-19CS	4-5 6.35-8	4-8 8-8	5-5	5-6	5-7	5-8	6-6	6-6.35	6-7	6-8
XGT-25CS	5-6 8-10	5-8 8-11	6-6 8-12	6-8 10-10	6-10 10-12	6-11 12-12	6-12	6.35-8	6.35-10	8-8
XGT-27CS	5-6 8-10	5-8 8-11	5-14 8-12	6-6 8-14	6-8 10-10	6-10 10-12	6-11 10-14	6-12 12-12	6-14 12-14	8-8 14-14
XGT-30CS	8-8 10-15	8-10 11-12	8-11 12-12	8-12 12-14	8-14 12-15	8-15 14-14	10-10 14-15	10-11 15-15	10-12	10-14
XGT-34CS	8-8 10-15	8-10 11-11	8-11 11-12	8-12 12-12	8-14 12-14	8-15 12-15	10-10 14-14	10-11 14-15	10-12 15-15	10-14 16-16
XGT-39CS	10-10 12-20	10-12 14-14	10-14 14-15	10-15 14-16	10-16 15-16	12-12 15-16	12-14 15-19	12-15 16-16	12-16 17-17	12-19 20-20
XGT-44CS	12-12 15-19	12-14 15-20	12-16 16-16	12-19 16-19	14-14 17-17	14-15 19-20	14-16 20-20	14-19	15-15	15-16
XGT-56CS	15-15	15-19	15-20	15-25	19-20	19-24	20-20	20-25	24-25	25-25

- All products are provided with hex socket head cap screw.
- Recommended dimensional allowances of applicable shaft diameter are h6 and h7.
- In case of mounting on D-cut shaft, be careful about the position of the D-cut surface of the shaft. → P.xxxx

Performance

Part Number	Max. Bore Diameter (mm)	Rated*1 torque (N·m)	Max.*1 torque (N·m)	Max. Rotational Frequency (min ⁻¹)	Moment*2 of Inertia (kg·m ²)	Static Torsional Stiffness (N·m/rad)	Max. Lateral Misalignment (mm)	Max. Angular Misalignment (°)	Max. Axial Misalignment (mm)	Mass*2 (g)
XGT-15CS	6	1.1	2.2	42000	2.3×10 ⁻⁷	43	0.15	1.5	±0.2	8
XGT-19CS	8	2.1	4.2	33000	6.9×10 ⁻⁷	88	0.15	1.5	±0.2	14
XGT-25CS	12	4	8	25000	2.5×10 ⁻⁶	140	0.15	1.5	±0.2	27
XGT-27CS	14	4	8	23000	3.4×10 ⁻⁶	140	0.15	1.5	±0.2	30
XGT-30CS	15	6.3	12.6	21000	6.0×10 ⁻⁶	220	0.2	1.5	±0.3	44
XGT-34CS	16	8	16	18000	1.0×10 ⁻⁵	390	0.2	1.5	±0.3	61
XGT-39CS	20	13.5	27	16000	2.3×10 ⁻⁵	520	0.2	1.5	±0.3	98
XGT-44CS	22	18	36	14000	3.7×10 ⁻⁵	640	0.2	1.5	±0.3	124
XGT-56CS	28	35	70	11000	1.2×10 ⁻⁴	1500	0.2	1.5	±0.3	252

*1 Correction of rated torque and max. torque due to load fluctuation is not required. However, if ambient temperature exceeds 30°C, be sure to correct the rated torque and max. torque with temperature correction factor shown in the following table. XGT-CS's allowable operating temperature is -20°C to 80°C.

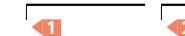
*2 These are values with max. bore diameter.

• Ambient Temperature / Temperature Correction Factor

Ambient Temperature	Temperature Correction Factor
-20°C to 30°C	1.00
30°C to 40°C	0.80
40°C to 60°C	0.70
60°C to 80°C	0.55

• Part number specification

XGS-34-11-12



[Additional Keyway at Shaft Hole → P.xxxx](#)
[Cleanroom Wash & Packaging → P.xxxx](#)
[Change to Stainless Steel Screw → P.xxxx](#)