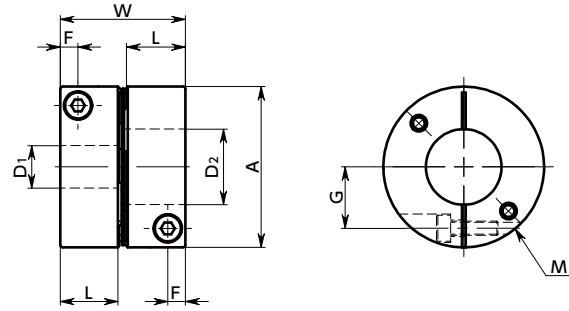


XHS-C Flexible Coupling - Single Disk Type Additional Size

[WEB Selection Tool](#)
[WEB CAD Download](#)
[Zero Backlash](#)
[High torque](#)
[High Rigidity](#)

XHS-C



Outside diameter $\phi 15$

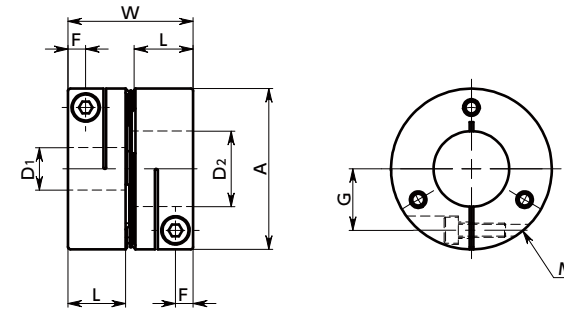
Dimensions

Unit : mm

Part Number	A	L	W	F	G	M	Screw Tightening Torque (N·m)
XHS-15C	15	7.5	15.8	2.1	5	M2	0.45
XHS-19C	19	9.2	19.4	2.6	7	M2	0.5
XHS-25C	25	11	23.1	3.3	9.25	M2.5	1
XHS-27C	27	11	23.1	3.3	10.25	M2.5	1
XHS-34C	34	12.5	26.5	3.75	13	M3	1.5
XHS-39C	39	15.5	32.8	4.5	14.5	M4	3.5
XHS-44C	44	15.5	32.8	4.5	17	M4	3.5
XHS-56C	56	20.5	43.2	6	21	M5	8
XHS-64C	64	24	51.2	7	24	M6	13
XHS-79C	79	30	63.6	8.75	29	M8	28

Part Number	Standard Bore Diameter D1 · D2																											
	3	4	5	6	6.35	8	9.525	10	11	12	14	15	16	17	18	19	20	22	24	25	28	30	32	35	38	40	42	
XHS-15C	●	●	●	●																								
XHS-19C	●	●	●	●	●	●																						
XHS-25C		●	●	●	●	●	●	●	●	●																		
XHS-27C		●	●	●	●	●	●	●	●	●	●																	
XHS-34C			●	●	●	●	●	●	●	●	●	●	●															
XHS-39C				●	●	●	●	●	●	●	●	●	●	●	●	●	●											
XHS-44C					●	●	●	●	●	●	●	●	●	●	●	●	●	●										
XHS-56C						●	●	●	●	●	●	●	●	●	●	●	●	●	●	●								
XHS-64C							●	●	●	●	●	●	●	●	●	●	●	●	●	●	●	●	●	●	●	●	●	●
XHS-79C										●	●	●	●	●	●	●	●	●	●	●	●	●	●	●	●	●	●	●

- All products are provided with hex socket head cap screw.
- Recommended dimensional allowances of applicable shaft diameter are h6 and h7.
- In case of mounting on D-cut shaft, be careful about the position of the D-cut surface of the shaft. → P.257



Outside diameter $\phi 19 - \phi 79$

Performance

Part Number	Max. Bore Diameter (mm)	Rated*1 torque (N·m)	Max.*1 torque (N·m)	Max. Rotational Frequency (min ⁻¹)	Moment*2 of Inertia (kg·m ²)	Static Torsional Stiffness (N·m/rad)	Max. Lateral Misalignment (mm)	Max. Angular Misalignment (°)	Max. Axial Misalignment (mm)	Mass*2 (g)
XHS-15C	6	0.6	1.2	42000	2.2×10 ⁻⁷	110	0.01	0.7	±0.1	6.6
XHS-19C	8	1.5	3	33000	6.3×10 ⁻⁷	330	0.02	1	±0.15	13
XHS-25C	12	3	6	25000	2.3×10 ⁻⁶	1200	0.02	1	±0.2	25
XHS-27C	14	3.3	6.6	23000	3.1×10 ⁻⁶	1800	0.02	1	±0.25	27
XHS-34C	16	6.3	12.6	18000	9.2×10 ⁻⁶	3900	0.02	1	±0.3	52
XHS-39C	20	12	24	16000	2.0×10 ⁻⁵	6000	0.02	1	±0.35	84
XHS-44C	22	15	30	14000	3.3×10 ⁻⁵	7900	0.02	1		107
XHS-56C	28	37.5	75	11000	1.1×10 ⁻⁴	14000	0.02	1		233
XHS-64C	35	50	100	9800	2.2×10 ⁻⁴	16000	0.02	1		328
XHS-79C	42	100	200	7900	6.7×10 ⁻⁴	23000	0.02	1		748

*1 Correction of rated torque and max. torque due to load fluctuation is not required.

*2 These are values with max. bore diameter.

● Part number specification

XHS-27C-8-10

1 2

[Additional Keyway at Shaft Hole → P.788](#)
[Cleanroom Wash & Packaging → P.792](#)
[Change to Stainless Steel Screw → P.790](#)
 Available / Add'l charge Available / Add'l charge Please feel free to contact us