



Driven by T05 software (included)

Dot-peen

Stand-alone
marking solutions

DOT PEEN SOLUTION

XF500^P

XF500^m

DOT PEEN SOLUTION XF500

An economical and easy-to-use marking station for the rapid identification of all your parts.

**Unpack and plug your XF500:
it's ready to mark!**

The «all-in-one» concept guarantees simplicity and efficiency: you can identify all your parts error-free, from a single unit to large series.

Using dot peen technology, the XF500 offers **tamper-proof indent marking**, without consumables and no material removal.

Versatile, it can handle all part shapes and surfaces (flat, concave, convex, rough, smooth etc.) regardless of the material: metals, alloys, plastics etc.



HIGH-PERFORMANCE AND ROBUST

Equipped with Technifor mechanics and electronics that have been proven on high-speed lines, the XF500 is **robust, reliable and fast** (up to 5 characters per second).

It delivers **consistent marking quality**, batch after batch.

EASY TO INSTALL

Plug and Play with embedded software and control unit, the XF500 requires neither a PC nor any training.

Connected to a simple keyboard (supplied), **its wide, graphic interface guides the operator step by step**, from the creation of marking files to execution on the part.

“ *A real productivity boosting tool, the XF500 allows the simple automation of marking operations, reducing the risk of error and the costs generated by manual marking or rolling etc.* ”

Universal range

- + • Extended marking area: 100 x 120 mm
- Wide integrated screen (240 x 128 pixels)
- Interface and manual in more than 20 languages

- Integrated T05 program
- High memory capacity: data transfer in real time, storage of history files etc.

Height adjustment column
(parts up to 330mm in height)

Communication
tools:

- USB
- Ethernet
- RS232

Table in grooved cast
aluminium

Column rotation
possible for large
workpieces



XF500^P

XF500^M

The versatile X500 offers all the power and functions you need to handle your increasing production.

- The XF500p pneumatic: fast and productive
- The XF500m electro-magnetic: precise and silent

A wide range of accessories:

- Part rotation device
- PFD500 plate feeder
- Plate holder and clamping
- Lighting of the marking area
- Foot pedal
- Button panel
- Range of stylii and points
- Windows® T500W software
- 1D and 2D code readers

EASY TO USE

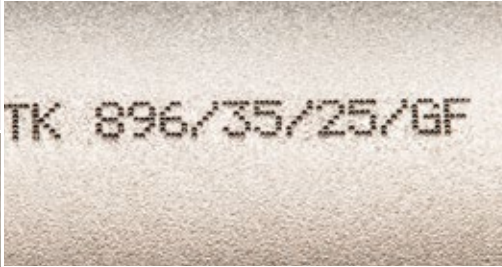
The user navigates intuitively on the backlit screen with the help of a **graphic display and icons**:

- Text, logos, variable, date and time, counter, Data Matrix™ code, QR code etc.
- Flat, angled, radial marking
- Link to Excel/Access databases
- Data send/receive by keyboard, barcode reader etc.

DEDICATED IDENTIFICATION AND TRACEABILITY SOFTWARE

From the simplest to the most advanced of needs, the T05 offers **multiple pre-programmed functions**: file selection, history files, operator/supervisor access, comparison of variables etc. The XF500 enables the user to **check data before marking it**, thereby avoiding duplications, scan errors, and input errors.





From the hardest of metals (up to HRC 62) to the softest of plastics, the XF500 directly marks all your parts in mechanical workshops and process assemblies, in aeronautics subcontracting, on automotive industry recall stations, etc.

- Part batch traceability: Data Matrix™ code, QR code
- Product identification: references, logos, serial numbers, dates etc.
- Automatic plate marking
- Marking of cylindrical parts

Mechanics
Metallurgy
Locksmithing
Automotive
Aeronautics

Military & Armaments
Plastics industry
Cycles
Identification plates



Technifor UK
Unit 3 Trojan Business Centre
Tachbrook Park Drive
LEAMINGTON SPA
Warwickshire CV34 6RH
Tel. : (44) 01926 88 44 22
Fax : (44) 01926 88 31 05
sales@ltd.technifor.com