

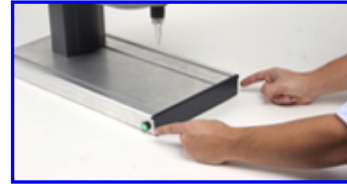
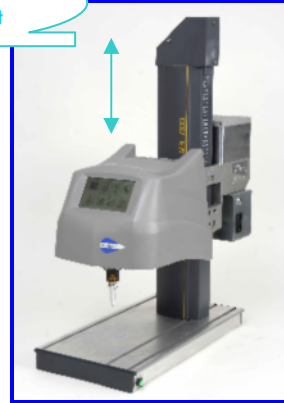
Specification

The **XF500Zm** is an **INNOVATIVE** machine equipped with:

- a high precision automatic Z-axis
- an electromagnetic stylus with touch sensor

We can assure a high quality positioning and marking.

INNOVATIVE SOLUTION
Automatic height adjustment

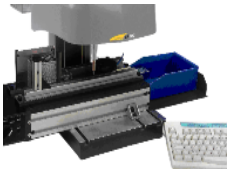


ADVANTAGES & INNOVATION

- Benchtop "premium" solution: automatic Z axis + touch sensor
- 2-way marking
- Marking files from USB keys
- Safety (thanks to bimanual command)
- Quality of marking
- Robust machine & Flexibility
- Quiet and quality marking
- Reliable and cost-effective

Applications

XF500Zm is adapted to many applications: from marking a small spare part to a big part, from plastic to hard metal, from simple text to complicated logo, data matrix, etc.



Applications:

Datamatrix
Logos
Serial number
Text
VIN
... Whatever you want!

Markets:

Mechanics, Metal working
Automotive part manufacturing
Steel industry
Space & Aeronautics
Oil & Gas

Nameplates and tags
Keys & locks
Bicycles and Motorcycles manufacturing
Agricultural & Heavy equipment
Rubber, Plastics mfg

Technical characteristics

Energy	Electromagnetic
Marking area	100 x 120 mm
Z axis	280 mm
Character size	From 0.5 to 99.5 mm
Marking speed	5 characters/second

Machine weight	35 kg
Display	Blacklit & Graphical (5.7")
Connection type	Serial (RS232) + USB
Operating temperature	5 to 45°C
Electrical supply	90 to 230VAC - 50 to 60Hz

Options and accessories

SAFETY & PROTECTION

Control Panel
50686



Standard footswitch
50684



Industrial footswitch
50685



Air cooling Kit
57483



EXPENDABLE & MODULAR

Plate holder
52546



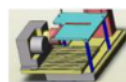
Magnetic clamping
52545



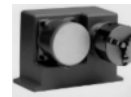
Plate feeder
58200



Raised Plate holder
52550



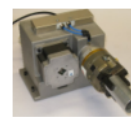
Rotating device
51634



Rotating device -Large parts
51637



Rotating device with pneumatic chuck
62708

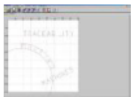


INNOVATION & TECHNOLOGY

Light for marking area
50687



Window software with //key: 60873 with USB key: 51416



Protective cover
52558



Data Matrix reader

