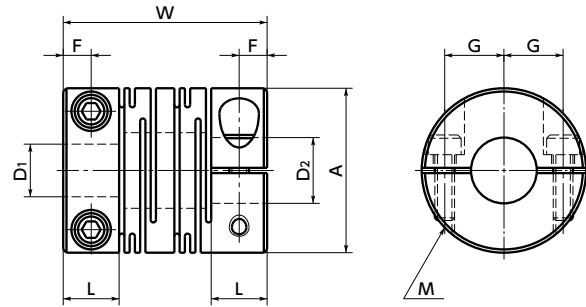


# MST-C/MSTS-C Flexible coupling - Slit - type - Clamping type

WEB Selection Tool | WEB CAD Download | 0 Zero Backlash | SUS Stainless steel

**MST-C** Made of aluminum alloy  
**MSTS-C** Made of all stainless steel  
 Outside diameter  $\phi 40 - \phi 63$



## Dimensions

Unit : mm

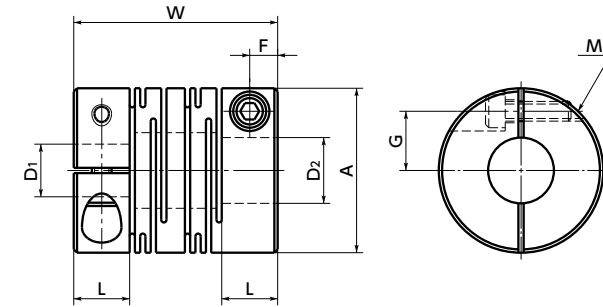
Part Number	A	L	W	F	G	M	Screw Tightening Torque (N·m)
MST-12C	12	5	18.5	2.5	4	M2	0.5
MST-16C	16	6.5	23	3.25	5	M2.5	1
MST-20C	20	7.5	26	3.75	6.5	M2.5	1
MST-25C	25	8.5	31	4.25	9	M3	1.5
MST-32C	32	12	41	6	11	M4	2.5
MST-40C	40	17	56	8.5	14	M5	4
MST-50C	50	21	71	10.5	18	M6	8
MST-63C	63	26	90	13	24	M8	16
MSTS-12C	12	5	18.5	2.5	4	M2	0.5
MSTS-16C	16	6.5	23	3.25	5	M2.5	1
MSTS-20C	20	7.5	26	3.75	6.5	M2.5	1
MSTS-25C	25	8.5	31	4.25	9	M3	1.5
MSTS-32C	32	12	41	6	11	M4	2.5
MSTS-40C	40	17	56	8.5	14	M5	4
MSTS-50C	50	21	71	10.5	18	M6	8
MSTS-63C	63	26	90	13	24	M8	16

Part Number	Standard Bore Diameter D1-D2								
MST-12C	MSTS-12C	4 - 4	4 - 5	4.5 - 5	5 - 5				
MST-16C	MSTS-16C	4.5 - 5	4.5 - 6	5 - 5	5 - 6	6 - 6			
MST-20C	MSTS-20C	5 - 6 6.35 - 8	5 - 6.35 8 - 8	5 - 7	5 - 8	6 - 6	6 - 6.35	6 - 7	6 - 8
MST-25C	MSTS-25C	5 - 6 8 - 9.525	6 - 6 8 - 10	6 - 6.35 9.525 - 10	6 - 8 10 - 10	6 - 10	6.35 - 8	6.35 - 10	8 - 8
MST-32C	MSTS-32C	8 - 8 10 - 12	8 - 9.525 10 - 14	8 - 10 12 - 12	8 - 12 12 - 14	9.525 - 10	9.525 - 12	10 - 10	10 - 11
MST-40C	MSTS-40C	8 - 8 15 - 16	8 - 10 16 - 16	10 - 10	12 - 12	12 - 14	14 - 14	14 - 16	15 - 15
MST-50C	MSTS-50C	12 - 14	14 - 14	15 - 15	16 - 16	18 - 18			
MST-63C	MSTS-63C	14 - 14	16 - 16	18 - 18					

- All products are provided with hex socket head cap screw.
- Recommended dimensional allowances of applicable shaft diameter are h6 and h7.
- In case of mounting on D-cut shaft, be careful about the position of the D-cut surface of the shaft. → P.257
- **MST-C** has variable slit shapes depending on the size. See the Slit Details.

Additional Keyway at Shaft Hole → P.788 | Cleanroom Wash & Packaging → P.792 | Change to Stainless Steel Screw → P.790  
 Available / Add'l charge | Available / Add'l charge | Available / Add'l charge

**MSTS-C** Made of all stainless steel  
 Outside diameter  $\phi 12 - \phi 32$



## Performance

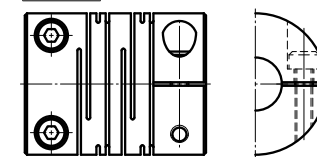
Part Number	Max. Bore Diameter (mm)	Rated*1 torque (N·m)	Max.*1 torque (N·m)	Max. Rotational Frequency (min <sup>-1</sup> )	Moment*2 of Inertia (kg·m <sup>2</sup> )	Static Torsional Stiffness (N·m/rad)	Max. Lateral Misalignment (mm)	Max. Angular Misalignment (°)	Max. Axial Misalignment (mm)	Mass*2 (g)
MST-12C	5	0.4	0.8	52000	7.8×10 <sup>-8</sup>	45	0.1	2	±0.3	3.6
MST-16C	6	0.5	1	39000	3.4×10 <sup>-7</sup>	80	0.1	2	±0.4	9.2
MST-20C	8	1	2	31000	9.1×10 <sup>-7</sup>	170	0.1	2	±0.4	16
MST-25C	10	2	4	25000	2.6×10 <sup>-6</sup>	380	0.15	2	±0.5	28
MST-32C	14	4	8	19000	9.7×10 <sup>-6</sup>	500	0.15	2	±0.5	64
MST-40C	18	8	16	15000	3.3×10 <sup>-5</sup>	700	0.2	2	±0.5	140
MST-50C	22	16	32	12000	1.0×10 <sup>-4</sup>	1800	0.2	2	±0.5	270
MST-63C	30	32	64	10000	3.2×10 <sup>-4</sup>	3100	0.2	2	±0.5	530
MSTS-12C	5	0.3	0.6	52000	2.2×10 <sup>-7</sup>	64	0.1	2	±0.2	10
MSTS-16C	6	0.5	1	39000	9.0×10 <sup>-7</sup>	85	0.1	2	±0.3	25
MSTS-20C	8	1	2	31000	2.5×10 <sup>-6</sup>	250	0.1	2	±0.3	43
MSTS-25C	10	2	4	25000	7.1×10 <sup>-6</sup>	330	0.15	2	±0.4	78
MSTS-32C	14	3.5	7	19000	2.7×10 <sup>-5</sup>	850	0.15	2	±0.5	170
MSTS-40C	18	8	16	15000	9.0×10 <sup>-5</sup>	1000	0.2	2	±0.5	370
MSTS-50C	22	15	30	12000	2.8×10 <sup>-4</sup>	1400	0.2	2	±0.5	750
MSTS-63C	30	35	70	10000	8.8×10 <sup>-4</sup>	1800	0.2	2	±0.5	1400

\*1 Correction of rated torque and max. torque due to load fluctuation is not required.

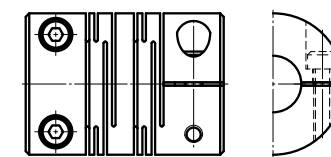
\*2 These are values with max. bore diameter.

### Slit Details

**MST-C**



Outside diameter  $\phi 12 - \phi 32$



Outside diameter  $\phi 40 - \phi 63$

Part number specification

**MST-40C - 12-14**

