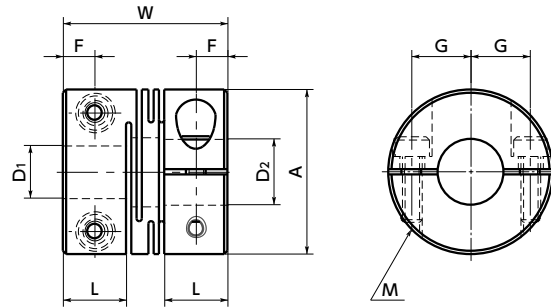


MWS-C / MWSS-C Flexible coupling - Slit - type - Clamping type

[WEB Selection Tool](#)
[WEB CAD Download](#)
[0](#) Zero Backlash
 [SUS](#) Stainless steel

MWS-C Made of aluminum alloy



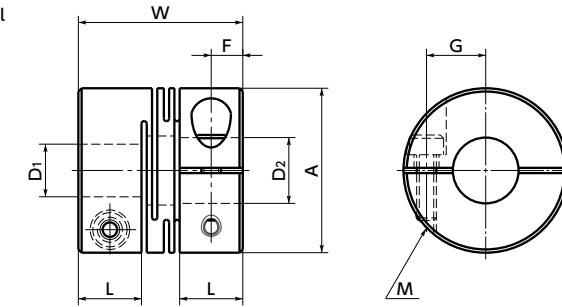
Dimensions

Unit : mm

Part Number	A	L	W	F	G	M	Screw Tightening Torque (N·m)	Standard Bore Diameter							
								D1-D2							
MWS-12C	12	5.2	14	2.6	4	M2	0.5	4 - 4	4 - 5	4.5 - 5	5 - 5				
MWS-16C	16	6.8	18	3.4	5	M2.5	1	4.5 - 5	5 - 5	5 - 6	6 - 6				
MWS-20C	20	7.65	20	3.8	6.5	M2.5	1	5 - 6	5 - 8	6 - 6	6 - 8	8 - 8			
MWS-25C	25	9.6	25	4.8	9	M3	1.5	5 - 6	6 - 6	6 - 8	6 - 10	8 - 8	8 - 10	10 - 10	
MWS-32C	32	12.6	32	6.3	11	M4	2.5	8 - 8	8 - 10	10 - 10	10 - 12	12 - 12	12 - 14		
MWSS-12C	12	5.2	14	2.6	4	M2	0.5	4 - 4	4 - 5	4.5 - 5	5 - 5				
MWSS-16C	16	6.8	18	3.4	5	M2.5	1	4.5 - 5	5 - 5	5 - 6	6 - 6				
MWSS-20C	20	7.65	20	3.8	6.5	M2.5	1	5 - 6	5 - 8	6 - 6	6 - 7	6 - 8	8 - 8		
MWSS-25C	25	9.6	25	4.8	9	M3	1.5	5 - 6	6 - 6	6 - 8	6 - 10	8 - 8	8 - 10	10 - 10	
MWSS-32C	32	12.6	32	6.3	11	M4	2.5	8 - 8	8 - 10	10 - 10	10 - 12	12 - 12	12 - 14		

- All products are provided with hex socket head cap screw.
- Recommended dimensional allowances of applicable shaft diameter are h6 and h7.
- In case of mounting on D-cut shaft, be careful about the position of the D-cut surface of the shaft. → P.257

MWSS-C Made of all stainless steel



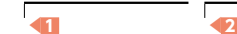
Performance

Part Number	Max. Bore Diameter (mm)	Rated*1 torque (N·m)	Max.*1 torque (N·m)	Max. Rotational Frequency (min ⁻¹)	Moment*2 of Inertia (kg·m ²)	Static Torsional Stiffness (N·m/rad)	Max. Angular Misalignment (°)	Max. Axial Misalignment (mm)	Mass*2 (g)
MWS-12C	5	0.4	0.8	52000	6.4×10 ⁻⁸	80	1	±0.1	3
MWS-16C	6	0.5	1	39000	2.9×10 ⁻⁷	180	1	±0.2	8
MWS-20C	8	1	2	31000	7.5×10 ⁻⁷	200	1	±0.2	13
MWS-25C	10	2	4	25000	2.3×10 ⁻⁶	780	1	±0.2	25
MWS-32C	14	4	8	19000	8.1×10 ⁻⁶	1100	1	±0.2	53
MWSS-12C	5	0.3	0.6	52000	1.8×10 ⁻⁷	140	1	±0.1	8.5
MWSS-16C	6	0.5	1	39000	7.8×10 ⁻⁷	240	1	±0.1	21
MWSS-20C	8	1	2	31000	2.1×10 ⁻⁶	330	1	±0.1	36
MWSS-25C	10	2	4	25000	6.3×10 ⁻⁶	720	1	±0.2	69
MWSS-32C	14	3.5	7	19000	2.2×10 ⁻⁵	1300	1	±0.2	150

- *1 Correction of rated torque and max. torque due to load fluctuation is not required.
- *2 These are values with max. bore diameter.

• Part number specification

MWS-16C - 5-6



[Additional Keyway at Shaft Hole → P.788](#)
[Cleanroom Wash & Packaging → P.792](#)
[Change to Stainless Steel Screw → P.790](#)