

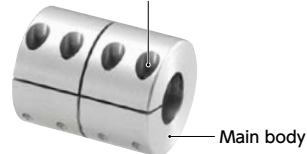
MLR/MLRS Rigid coupling - Long

WEB Selection Tool WEB CAD Download 0 Zero Backlash High Rigidity SUS Stainless steel

Structure

Clamping type

MLR-C Made of aluminum alloy → P.220
Hex Socket Head Cap Screw



MLRS-C Made of all stainless steel → P.220



Semi-split type

MLR-V Made of aluminum alloy → P.222



MLRS-V Made of all stainless steel → P.222



Applicable motors

| | MLR | MLRS |
|-----------------------|-----|------|
| Servomotor | ○ | ○ |
| Stepping motor | ○ | ○ |
| General-purpose motor | - | - |

○: Excellent ○: Very good

Property

| | MLR | MLRS |
|---------------------------------|-----|------|
| Zero Backlash | ○ | ○ |
| High Torque | ○ | ○ |
| High Torsional Stiffness | ○ | ○ |
| Corrosion Resistance (All S.S.) | - | ○ |

○: Excellent ○: Very good

- This is a long type rigid coupling.
- This can also be used as a joint for extending a shaft.
- There are two types of units made of aluminum alloy or stainless steel.
- There are clamping type and semi-split type.

Application

Cleaning equipment/Transport device

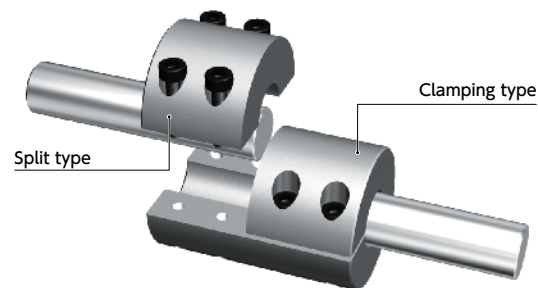
Material/Finish

RoHS Compliant

| | MLR-C / MLR-V | MLRS-C / MLRS-V |
|---------------------------|------------------------------------|-----------------|
| Main Body | A2017 Alumite Treatment | SUS303 |
| Hex Socket Head Cap Screw | SCM435 Ferrosoferric Oxide Film | SUSXM7 |

Semi-split type

Semi-split type is an attachment method in which one side of the hubs is clamping type and the other side is split type. While keeping one shaft attached on clamping side, the other shaft can be mounted or removed on split side, thus easier assembling set up.



Related Products

Rigid coupling with high precision **XRP** is available.
→ P.206



Part number specification

MLR - 16V - 6-6

Product Code size Bore Diameter

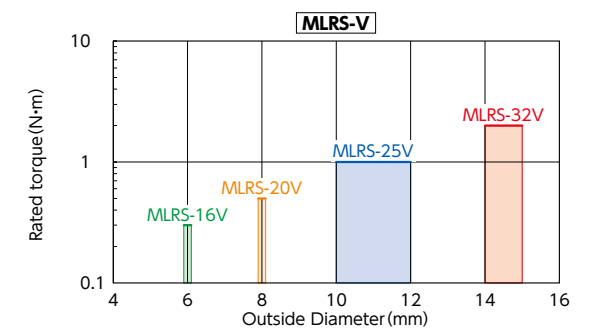
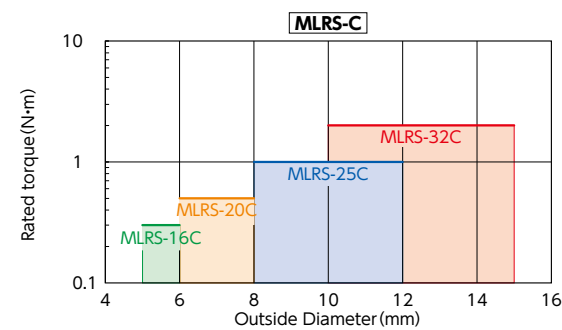
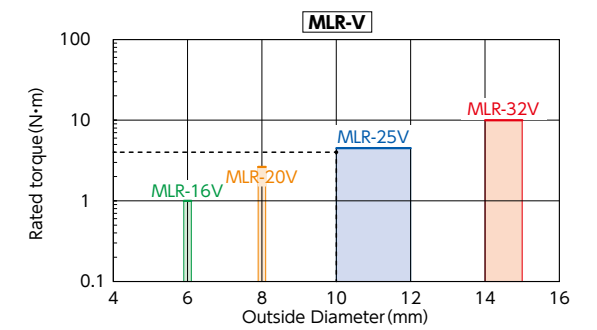
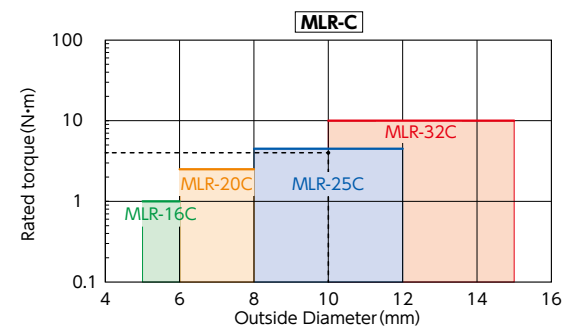
Please refer to dimensional table for part number specification.



Selection

Selection based on shaft diameter and rated torque

The area bounded by the shaft diameter and rated torque indicates is the selection size.



Selection example

In case of selected parameters of shaft diameter of $\phi 10$ and load torque of 4 N·m, the selected size is **MLR-25C** or **MLR-25V**.

Additional Keyway at Shaft Hole → P.788 Cleanroom Wash & Packaging → P.792 SUS Change to Stainless Steel Screw → P.790
Please feel free to contact us Available / Add'l charge Available / Add'l charge