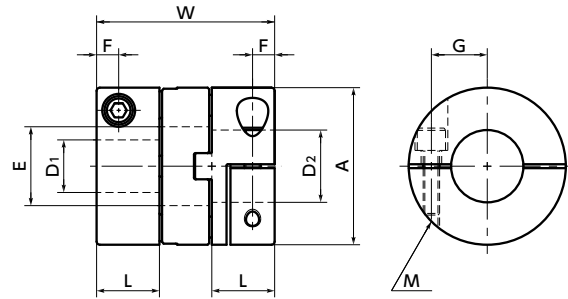


# MOM-C Flexible coupling - Oldham - type - Clamping type

WEB Selection Tool WEB CAD Download High torque High Rigidity

MOM-C



Outside Diameter:  $\phi 15 - \phi 38$

## Dimensions

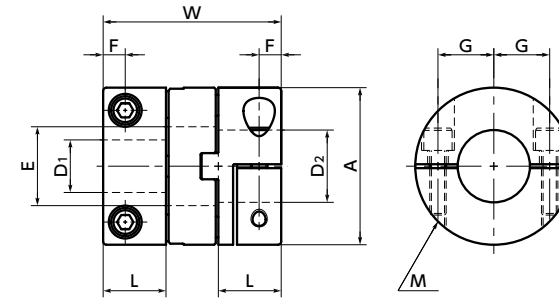
Unit : mm

Part Number	A	L	W	E	F	G	M	Screw Tightening Torque (N·m)
MOM-15C	15	6.6	19	6.9	2.15	5.2	M1.6	0.25
MOM-17C	17	9	25	7.3	2.65	5.5	M2	0.5
MOM-20C	20	10	28	11.1	3.25	7.25	M2.5	1
MOM-26C	26	11.5	31.6	13.3	4	9	M3	1.5
MOM-30C	30	12	34	15.5	4	11	M3	1.5
MOM-34C	34	13	35	17.5	4.5	12	M4	3.5
MOM-38C	38	15	40.5	21.5	4.75	14	M4	3.5
MOM-45C	45	16.2	47.6	24.3	6.2	16	M5	8
MOM-55C	55	20.8	58.6	27.7	7.9	20	M6	13
MOM-70C	70	25	68.6	38.5	8.9	26	M6	13

Part Number	Standard Bore Diameter																				
	D1 · D2	3	4	5	6	6.35	8	10	12	14	15	16	18	20	22	24	25	28	30	35	
MOM-15C	●	●	●	●																	
MOM-17C		●	●	●																	
MOM-20C			●	●	●																
MOM-26C				●	●	●															
MOM-30C					●	●	●														
MOM-34C						●	●	●													
MOM-38C							●	●	●												
MOM-45C								●	●	●											
MOM-55C									●	●	●										
MOM-70C										●	●	●									

- All products are provided with hex socket head cap screw.
- Recommended dimensional allowances of applicable shaft diameter are h6 and h7.
- A set of hubs with clamping type for one side and set screw type or other type for the other side is available upon request.
- In case of mounting on D-cut shaft, be careful about the position of the D-cut surface of the shaft. → P.257

Additional Keyway at Shaft Hole → P.788 Available / Add'l charge  
 Cleanroom Wash & Packaging → P.792 Available / Add'l charge  
 Change to Stainless Steel Screw → P.790 Available / Add'l charge



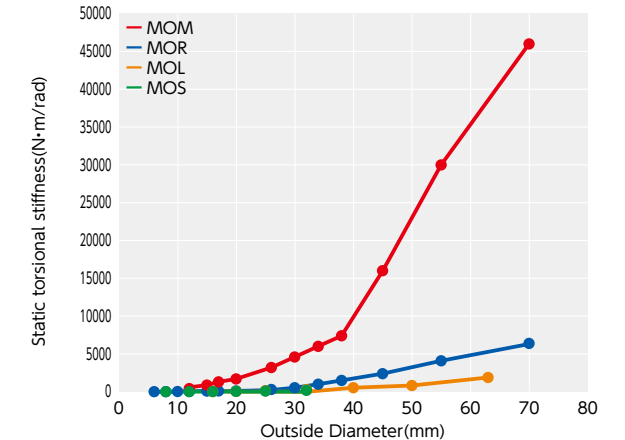
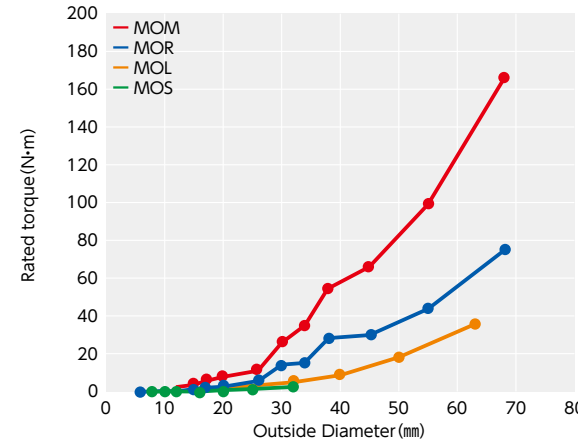
Outside Diameter:  $\phi 45 - \phi 70$

## Performance

Part Number	Max. Bore Diameter (mm)	Rated*1 torque (N·m)	Max.*1 torque (N·m)	Max. Rotational Frequency (min <sup>-1</sup> )	Moment*2 of Inertia (kg·m <sup>2</sup> )	Static Torsional Stiffness (N·m/rad)	Max. Lateral*3 Misalignment (mm) → P.176	Max. Angular Misalignment (°)	Mass*2 (g)
MOM-15C	6	3.3	6.6	2000	6.2×10 <sup>-7</sup>	870	0.3	2	19
MOM-17C	6.35	5.5	11	2000	1.4×10 <sup>-6</sup>	1300	0.3	2	34
MOM-20C	10	7.7	15.4	2000	3.0×10 <sup>-6</sup>	1700	0.4	2	47
MOM-26C	12	11	22	2000	9.6×10 <sup>-6</sup>	3200	0.5	2	92
MOM-30C	14	26	52	2000	1.8×10 <sup>-5</sup>	4600	0.6	2	131
MOM-34C	16	35	70	2000	3.1×10 <sup>-5</sup>	6000	0.7	2	173
MOM-38C	20	55	110	2000	5.5×10 <sup>-5</sup>	7400	0.8	2	235
MOM-45C	22	66	132	2000	1.2×10 <sup>-4</sup>	16000	1	2	387
MOM-55C	25	99	198	2000	3.4×10 <sup>-4</sup>	30000	1.2	2	752
MOM-70C	35	176	352	2000	1.0×10 <sup>-3</sup>	46000	1.4	2	1370

- \*1 Correction of rated torque and max. torque due to load fluctuation is not required.
- \*2 These are values with max. bore diameter.
- \*3 The max. lateral misalignment varies depending on the load torque and revolution. → P.176

### ● Comparison of rated torque



- Part number specification

**MOM-55C-15-16**

1 2