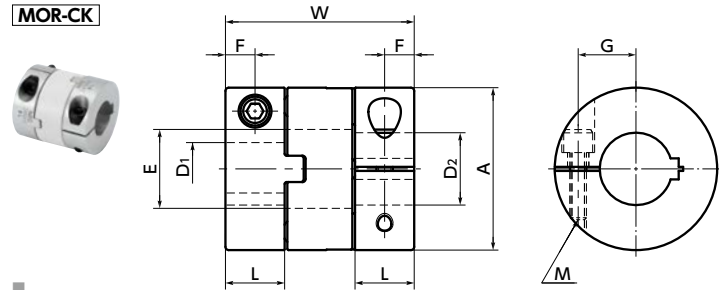


MOR-CK Flexible coupling - Oldham - type - Clamping + Key type

[WEB Selection Tool](#)
[WEB CAD Download](#)
[High torque](#)
[Electrical Insulation](#)
[High Allowable Misalignment](#)
[Small Eccentric Reaction Force](#)



Dimensions

Unit : mm

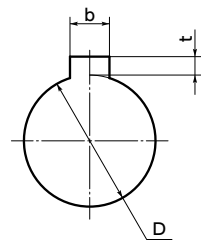
Part Number	A	L	W	E	F	G	M	Screw Tightening Torque (N·m)
MOR-15CK	15	5.8	18.8	8.2	2.9	5	M2.5	1
MOR-17CK	17	7.3	24.5	8.2	3.7	6	M2.5	1
MOR-20CK	20	8.8	27.4	12.2	4.4	7.5	M3	1.5
MOR-26CK	26	9.7	30.4	14.2	4.9	9.5	M3	1.5
MOR-30CK	30	10	32.5	16.2	5	11.1	M4	2.5
MOR-34CK	34	11.1	34	16.2	5.6	12.6	M4	2.5
MOR-38CK	38	12.1	40	20.3	6	14.2	M5	4
MOR-45CK	45	13.8	46	22.3	6.9	16	M5	4
MOR-55CK	55	18.7	57	26.5	9.4	20	M6	8
MOR-68CK	68	24	77	38.5	12	26	M8	16

Part Number	Standard Bore Diameter														
	D1 · D2	6	8	10	12	14	15	16	18	20	22	25	28	30	35
MOR-15CK	●														
MOR-17CK	●														
MOR-20CK	●	●	●												
MOR-26CK	●	●	●	●											
MOR-30CK		●	●	●	●										
MOR-34CK			●	●	●	●									
MOR-38CK			●	●	●	●	●								
MOR-45CK				●	●	●	●	●							
MOR-55CK					●	●	●	●	●						
MOR-68CK									●	●	●	●	●	●	●

- All products are provided with hex socket head cap screw.
- Recommended dimensional allowances of applicable shaft diameter are h6 and h7.
- A set of hubs with clamping + key type for one side and clamping type or other types for the other side is available upon request.
- In case of mounting on D-cut shaft, be careful about the position of the D-cut surface of the shaft. → P.257

Unit : mm

● Details of Shaft Hole



Standard bore diameter D	Keyway				Key Nominal dimension b×h
	b Standard Dimension	Allowance (JS9)	t Standard Dimension	Allowance	
6	2	±0.0125	1.0	+0.1 0	2×2
8	3	±0.0125	1.4	+0.1 0	3×3
10 · 12	4	±0.0150	1.8	+0.1 0	4×4
14 · 15 · 16	5	±0.0150	2.3	+0.1 0	5×5
18 · 20 · 22	6	±0.0150	2.8	+0.1 0	6×6
25 · 28	8	±0.0180	3.3	+0.2 0	8×7
30 · 35	10	±0.0180	3.3	+0.2 0	10×8

● Excerpt from JIS B 1301

[Additional Keyway at Shaft Hole → P.788](#)
[Cleanroom Wash & Packaging → P.792](#)
[Change to Stainless Steel Screw → P.790](#)

Please feel free to contact us Available / Add'l charge Available / Add'l charge

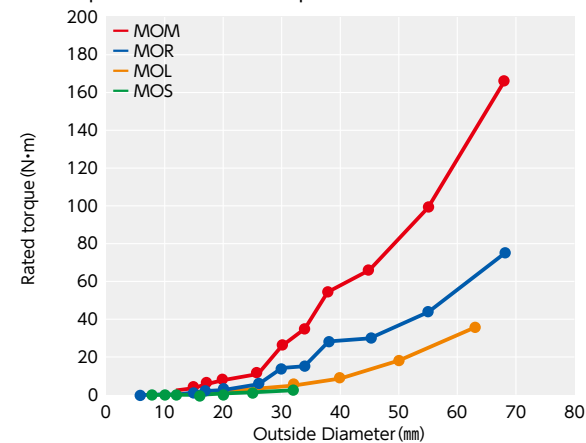
Performance

Part Number	Max. Bore Diameter (mm)	Rated*1 torque (N·m)	Max.*1 torque (N·m)	Max. Rotational Frequency (min ⁻¹)	Moment*2 of Inertia (kg·m ²)	Static Torsional Stiffness (N·m/rad)	Max. Lateral Misalignment (mm)	Max. Angular Misalignment (°)	Mass*2 (g)
MOR-15CK	6	1.6	3.2	42000	1.8×10 ⁻⁷	80	1	3	5
MOR-17CK	6.35	2.2	4.4	37000	3.8×10 ⁻⁷	120	1.2	3	9
MOR-20CK	10	3.2	6.4	31000	8.0×10 ⁻⁷	120	1.2	3	13
MOR-26CK	14	6	12	24000	2.5×10 ⁻⁶	300	1.5	3	23
MOR-30CK	14	15	30	21000	5.2×10 ⁻⁶	530	2	3	38
MOR-34CK	16	16	32	18000	8.6×10 ⁻⁶	1000	2.5	3	49
MOR-38CK	20	28	56	16000	1.5×10 ⁻⁵	1500	2.5	3	64
MOR-45CK	20	30	60	14000	3.2×10 ⁻⁵	2400	3	3	110
MOR-55CK	25	45	90	11000	1.0×10 ⁻⁴	4100	4	3	230
MOR-68CK	35	80	160	9000	3.3×10 ⁻⁴	6400	4.5	3	440

*1 Correction of rated torque and max. torque due to load fluctuation is not required. However, if ambient temperature exceeds 30°C, be sure to correct the rated torque and max. torque with temperature correction factor shown in the following table. The allowable operating temperature of [MOR] is -20°C to 80°C.

*2 These are values with max. bore diameter.

● Comparison of rated torque



● Ambient Temperature / Temperature Correction Factor

Ambient temperature	Temperature correction factor
-20°C to 30°C	1.00
30°C to 40°C	0.80
40°C to 60°C	0.70
60°C to 80°C	0.55

● Part number specification

MOR-38CK - 14-15 1 set

1
2

MOR - 20 - SPCR Single Spacer

Product Code Outside Diameter (A Dimension) Single Spacer