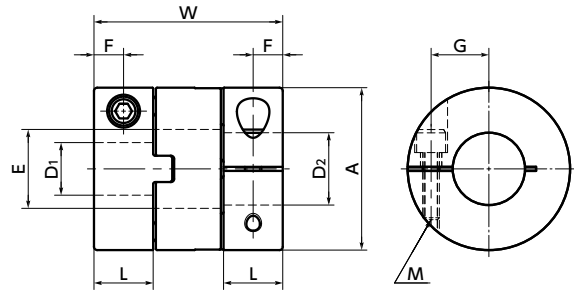


MOR-C Flexible coupling - Oldham - type - Clamping type

[WEB Selection Tool](#)
[WEB CAD Download](#)
[High torque](#)
[Electrical Insulation](#)
[High Allowable Misalignment](#)
[Small Eccentric Reaction Force](#)

MOR-C



Dimensions

Unit : mm

Part Number	A	L	W	E	F	G	M	Screw Tightening Torque (N·m)
MOR-12C	12	5	16.5	5.2	2.5	4	M2	0.5
MOR-15C	15	5.8	18.8	8.2	2.9	5	M2.5	1
MOR-17C	17	7.3	24.5	8.2	3.7	6	M2.5	1
MOR-20C	20	8.8	27.4	12.2	4.4	7.5	M3	1.5
MOR-26C	26	9.7	30.4	14.2	4.9	9.5	M3	1.5
MOR-30C	30	10	32.5	16.2	5	11.1	M4	2.5
MOR-34C	34	11.1	34	16.2	5.6	12.6	M4	2.5
MOR-38C	38	12.1	40	20.3	6	14.2	M5	4
MOR-45C	45	13.8	46	22.3	6.9	16	M5	4
MOR-55C	55	18.7	57	26.5	9.4	20	M6	8
MOR-68C	68	24	77	38.5	12	26	M8	16

Part Number	Standard Bore Diameter																					
	D1	D2	3	4	5	6	6.35	8	9.525	10	12	14	15	16	18	20	22	25	28	30	35	
MOR-12C	●	●	●																			
MOR-15C		●	●	●																		
MOR-17C			●	●	●																	
MOR-20C				●	●	●	●	●														
MOR-26C					●	●	●	●	●													
MOR-30C						●	●	●	●	●												
MOR-34C							●	●	●	●	●											
MOR-38C								●	●	●	●	●	●									
MOR-45C									●	●	●	●	●	●								
MOR-55C										●	●	●	●	●	●	●						
MOR-68C											●	●	●	●	●	●	●	●				

- All products are provided with hex socket head cap screw.
- Recommended dimensional allowances of applicable shaft diameter are h6 and h7.
- A set of hubs with clamping type for one side and set screw type or other type for the other side is available upon request.
- In case of mounting on D-cut shaft, be careful about the position of the D-cut surface of the shaft. → P.257

[Additional Keyway at Shaft Hole → P.788](#)
[Cleanroom Wash & Packaging → P.792](#)
[Change to Stainless Steel Screw → P.790](#)

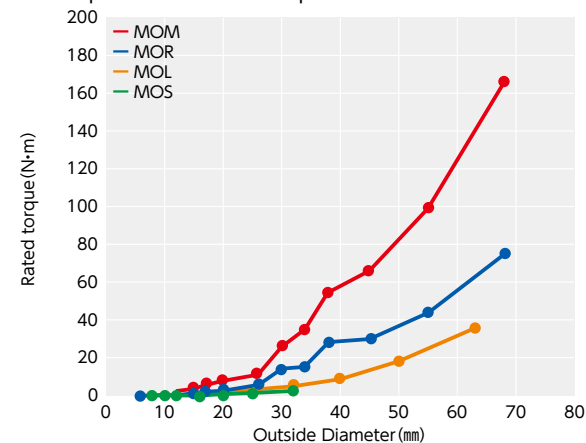
Performance

Part Number	Max. Bore Diameter (mm)	Rated*1 torque (N·m)	Max.*1 torque (N·m)	Max. Rotational Frequency (min ⁻¹)	Moment*2 of Inertia (kg·m ²)	Static Torsional Stiffness (N·m/rad)	Max. Lateral Misalignment (mm)	Max. Angular Misalignment (°)	Mass*2 (g)
MOR-12C	5	1	2	52000	6.6×10 ⁻⁸	60	1	3	3
MOR-15C	6	1.6	3.2	42000	1.7×10 ⁻⁷	80	1	3	5
MOR-17C	6.35	2.2	4.4	37000	3.8×10 ⁻⁷	120	1.2	3	9
MOR-20C	10	3.2	6.4	31000	8.0×10 ⁻⁷	120	1.2	3	13
MOR-26C	14	6	12	24000	2.5×10 ⁻⁶	300	1.5	3	24
MOR-30C	14	15	30	21000	5.3×10 ⁻⁶	530	2	3	39
MOR-34C	16	16	32	18000	8.6×10 ⁻⁶	1000	2.5	3	50
MOR-38C	20	28	56	16000	1.5×10 ⁻⁵	1500	2.5	3	67
MOR-45C	20	30	60	14000	3.2×10 ⁻⁵	2400	3	3	110
MOR-55C	25	45	90	11000	1.0×10 ⁻⁴	4100	4	3	230
MOR-68C	35	80	160	9000	3.3×10 ⁻⁴	6400	4.5	3	440

*1 Correction of rated torque and max. torque due to load fluctuation is not required. However, if ambient temperature exceeds 30°C, be sure to correct the rated torque and max. torque with temperature correction factor shown in the following table. The allowable operating temperature of MOR-C is -20°C to 80°C.

*2 These are values with max. bore diameter.

Comparison of rated torque



Ambient Temperature / Temperature Correction Factor

Ambient temperature	Temperature correction factor
-20°C to 30°C	1.00
30°C to 40°C	0.80
40°C to 60°C	0.70
60°C to 80°C	0.55

Part number specification

MOR-55C - 18-20 1 set

1
2

MOR - 20 - SPCR Single Spacer

Product Code: MOR - 20 (A Dimension)

Single Spacer