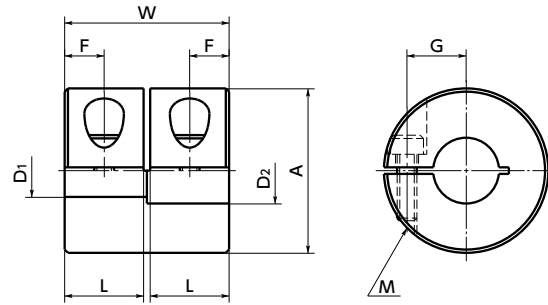


MRG-C / MRGS-C Rigid coupling - Clamping type

[WEB Selection Tool](#)
[WEB CAD Download](#)
[Zero Backlash](#)
[High torque](#)
[High Rigidity](#)
[SUS Stainless steel](#)

MRG-C Made of aluminum alloy
MRGS-C Made of all stainless steel



Dimensions • Performance

Unit : mm

Part Number	A	W	L	F	G	M	Screw Tightening Torque (N·m)	Standard Bore Diameter																			
								D1 · D2	5	6	8	10	12	14	15	16	18	19	20	25	28	30					
MRG-16C	16	16	7.5	3.75	5	M2.5	1	●	●																		
MRG-20C	20	20	9.5	4.75	6.5	M2.5	1		●	●																	
MRG-25C	25	25	12	6	9	M3	1.5			●	●																
MRG-32C	32	32	15.5	7.75	11	M4	2.5				●	●	●														
MRG-40C	40	40	19.5	9.5	14	M5	4					●	●	●													
MRG-50C	50	50	24.4	12	18	M6	8							●	●	●								●	●		
MRG-65C	65	65	31.9	16	23	M8	16																	●	●	●	
MRGS-16C	16	16	7.5	3.75	5	M2.5	1	●	●																		
MRGS-20C	20	20	9.5	4.75	6.5	M2.5	1		●	●																	
MRGS-25C	25	25	12	6	9	M3	1.5			●	●																
MRGS-32C	32	32	15.5	7.75	11	M4	2.5				●	●	●														
MRGS-40C	40	40	19.5	9.5	14	M5	4					●	●	●													
MRGS-50C	50	50	24.4	12	18	M6	8							●	●	●								●	●		
MRGS-65C	65	65	31.9	16	23	M8	16																	●	●	●	

- All products are provided with hex socket head cap screws.
- Recommended dimensional allowances of applicable shaft diameter are h6 and h7.
- In case of mounting on D-cut shaft, be careful about the position of the D-cut surface of the shaft. → P.257

Performance

Part Number	Max. Bore Diameter (mm)	Rated torque*1 (N·m)	Max. torque*1 (N·m)	Max. Rotational Frequency (min ⁻¹)	Moment of Inertia*2 (kg·m ²)	Mass*2 (g)
MRG-16C	6	1	2	39000	3.0×10 ⁻⁷	8.3
MRG-20C	8	2.5	5	31000	8.7×10 ⁻⁷	15
MRG-25C	10	4.5	9	25000	2.7×10 ⁻⁶	29
MRG-32C	14	10	20	19000	7.1×10 ⁻⁶	51
MRG-40C	18	20	40	15000	2.4×10 ⁻⁵	104
MRG-50C	24	25	50	12000	7.5×10 ⁻⁵	197
MRG-65C	30	35	70	9000	2.8×10 ⁻⁴	446
MRGS-16C	6	0.3	0.6	39000	8.0×10 ⁻⁷	22
MRGS-20C	8	0.5	1	31000	2.4×10 ⁻⁶	41
MRGS-25C	10	1	2	25000	7.3×10 ⁻⁶	80
MRGS-32C	14	2	4	19000	2.5×10 ⁻⁵	160
MRGS-40C	18	3	6	15000	7.0×10 ⁻⁵	297
MRGS-50C	24	4.5	9	12000	2.1×10 ⁻⁴	563
MRGS-65C	30	7	14	9000	8.1×10 ⁻⁴	1270

- *1 Correction of rated torque and max. torque due to load fluctuation is not required.
- *2 These are values with max. bore diameter.

● Part number specification

MRG-32C-12-14



[Additional Keyway at Shaft Hole → P.788](#)
[Cleanroom Wash & Packaging → P.792](#)
[SUS Change to Stainless Steel Screw → P.790](#)

Please feel free to contact us

Available / Add'l charge

Available / Add'l charge