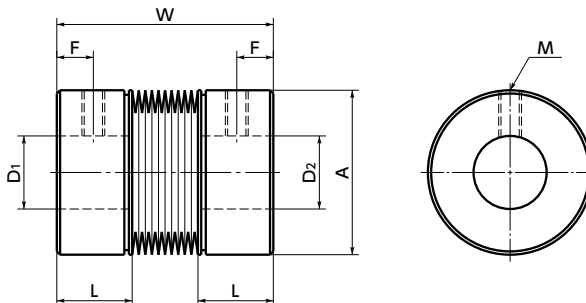


MWBS Flexible coupling - Bellows - type (high precision welding)

[WEB Selection Tool](#)
[WEB CAD Download](#)
[Zero Backlash](#)
[High Allowable Misalignment](#)
[SUS Stainless steel](#)

MWBS Made of all stainless steel



Dimensions

Unit : mm

Part Number	A	L	W	F	M	Screw Tightening Torque (N·m)	Standard Bore Diameter (dimensional allowance H8)								
							D1 · D2	4	5	6	8	10	11	12	14
MWBS-13	13	6	16.5	3	M2	0.5	●	●	●						
MWBS-18	18	8	22	4	M2.5	1		●	●	●					
MWBS-22	22	10	27	5	M3	1.5			●	●	●				
MWBS-28	28	14	37	7	M4	2.5				●	●	●	●	●	

- All products are provided with hex socket set screw.
- Recommended dimensional allowances of applicable shaft diameter are h6 and h7.

Performance

Part Number	Max. Bore Diameter (mm)	Rated*1 torque (N·m)	Max.*1 torque (N·m)	Max. Rotational Frequency (min ⁻¹)	Moment*2 of Inertia (kg·m ²)	Static Torsional Stiffness (N·m/rad)	Max. Lateral Misalignment (mm)	Max. Angular Misalignment (°)	Max. Axial Misalignment (mm)	Mass*2 (g)
MWBS-13	6	0.07	0.15	10000	2.5×10 ⁻⁷	30	0.15	3.5	0.5	9.8
MWBS-18	8	0.15	0.3	10000	1.2×10 ⁻⁶	40	0.15	5	0.5	25
MWBS-22	10	0.35	0.7	10000	3.4×10 ⁻⁶	200	0.15	4	0.5	48
MWBS-28	14	0.65	1.3	10000	1.4×10 ⁻⁵	900	0.15	4.5	0.5	110

*1 Correction of rated torque and max. torque due to load fluctuation is not required.

*2 These are values with max. bore diameter.



- Part number specification

MWBS-22-6-8

Product Code



Additional Keyway at Shaft Hole → P.788

Cleanroom Wash & Packaging → P.792

SUS Change to Stainless Steel Screw → P.790

Please feel free to contact us

Available / Add'l charge

Changed to the S.S. screw