

SNFTG Cross Recessed Flat Head Machine Screws - High Intensity Titanium Alloy



WEB Selection Tool

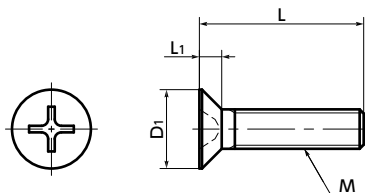
WEB CAD Download

Cleanroom wash & packaging

Non-Magnetic

High strength

Lightweight



Physical property

	Ti-15-3-3-3 (β Titanium)
Specific Gravity	4.8
Longitudinal Elastic Modulus (GPa)	90
Amplitude Permeability (μ)	1.0002 (Nonmagnetic)

• Values in chart are for reference only. They are not guaranteed values.

Mechanical property

	Ti-15-3-3-3 (β Titanium)
Tensile Strength (N/mm ²)	705 - 945
0.2% Proof Stress (N/mm ²)	690 - 835
Elongation (%)	12 or Higher

• Values in chart are for reference only. They are not guaranteed values.

Part number specification

SNFTG-M5-20



- These screws are made of high strength titanium alloy.
- Specific gravity is approximately 60% of stainless steel.
- Nonmagnetic.
- These screws are resistant to corrosion and are particularly strong against seawater.
- About the features of titanium → P.625
- Chemical polishing and brightening processing improve the screw surface. Furthermore, the screws are cleanroom washed, cleanroom packed, and comply with clean specifications that require no oil or foreign matter deposits.

SNFTG

Unprocessed



Application

Lightweight applications in automobiles, aircrafts, spacecrafts, and robots FPD production equipment, semiconductor devices, electrical and electronic equipment, and aquatic applications

Material/Finish

RoHS Compliant

	SNFTG
Main Body	Ti-15-3-3-3 (β Titanium)

Unit : mm

Part Number	M	L							D1	L1	Tension*1 Rupture Load (N)	Mass (g)
SNFTG-M3	M3	6	8	10	12	15	20	6	1.75	4170	0.33 - 0.68	
SNFTG-M4	M4		8	10	12	15	20	8	2.3	7520	0.73 - 1.5	
SNFTG-M5	M5		8	10	12	15	20	10	2.8	11900	1.4 - 2.6	

*1 Values in chart are for reference only. They are not guaranteed values.

Part Number	Qty per pack
SNFTG-M3	1
SNFTG-M4	1
SNFTG-M5	1

Individual Sales → P.794	Cleanroom Wash & Packaging → P.792	Screw Length Adjustment → P.796	Vibration Resistant → P.795	Modification process for captive use → P.791
1 unit in 1 bag	Cleanroom washed and packed	Available / Add'l charge	Available / Add'l charge	Not Available