

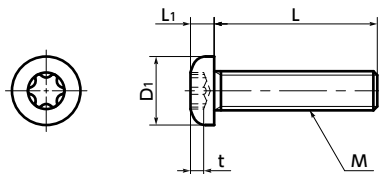


SNPXS Hexalobular Socket Pan Head Machine Screws

WEB Selection Tool

WEB CAD Download

SUS Stainless steel



● Part number specification

SNPXS-M5-20



Order in number of packs.

The minimum order quantity is 1 piece. → P.794

- The shape of hexalobular sockets* makes them more resistant to high tightening torques than cross recesses. → P.712
 - Less likely to damage the head caused by tightening. Therefore, able to make tightening safe and reliable.
 - Screws cannot be installed or removed by using standard tools such as a hex key or screwdriver. For prevention of disassembly, theft, and tampering of equipment and facilities.**
 - Install and remove by using **SKX** Specialty Hexalobular Key. → P.715
- *The hexalobular shape is prescribed by JIS B 1015 : 2008 (ISO 10664 : 2005) "Hexalobular internal driving feature for bolts and screws".
- **Tools for hexalobular sockets are commercially available. For tamper resistance, consider to select tamper resistance screws. → P.704

● Application

Prevention of damage to screw heads and reliable tightening

● Material/Finish

RoHS Compliant

	SNPXS
Main Body	SUSXM7 (S.S. grade : A2)
Strength Class	A2-50

Unit : mm

Part Number	M	L										D1	L1	Applicable wrench	Hexalobular Socket No.	t	Mass (g)
SNPXS-M2	M2	4	5	6	8	10	12					4	1.6	SKX-6	6	0.77	0.14 - 0.29
SNPXS-M2.5	M2.5	4	5	6	8	10	12	16				5	2.1	SKX-8	8	1.04	0.27 - 0.65
SNPXS-M3	M3		5	6	8	10	12	16	20			5.6	2.4	SKX-10	10	1.27	0.49 - 1.1
SNPXS-M4	M4			6	8	10	12	16	20	25		8	3.1	SKX-20	20	1.66	1 - 2.5
SNPXS-M5	M5				8	10	12	16	20	25	30	9.5	3.7	SKX-25	25	1.91	2.2 - 4.8
SNPXS-M6	M6					10	12	16	20	25	30	12	4.6	SKX-30	30	2.42	3.9 - 7.4

Part Number	Qty*1 per pack
SNPXS-M2	20
SNPXS-M2.5	20
SNPXS-M3	20
SNPXS-M4	20
SNPXS-M5	20
SNPXS-M6	20

*1 The minimum order quantity is 1 piece. → P.794

Individual Sales → P.794	Cleanroom Wash & Packaging → P.792	Screw Length Adjustment → P.796	Vibration Resistant → P.795	Modification process for captive use → P.791
Available / Add'l charge	Available / Add'l charge	Available / Add'l charge	Available / Add'l charge	Available / Add'l charge