

# SNSTG Socket Head Cap Screws - High Intensity Titanium Alloy



WEB Selection Tool

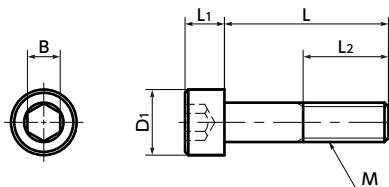
WEB CAD Download

Cleanroom wash & packaging

Non-Magnetic

High strength

Lightweight



## Physical property

	Ti-6Al-4V (64 Titanium)
Specific Gravity	4.43
Melting Point (°C)	1540
Longitudinal Elastic Modulus (GPa)	113
Thermal Conductivity (W / (m · K))	7.5
Linear Expansion Coefficient (K <sup>-1</sup> )	8.8 × 10 <sup>-6</sup>
Electric Resistance (μΩ · m)	1.7
Amplitude Permeability (μ)	1.0002 (Nonmagnetic)

• Values in chart are for reference only. They are not guaranteed values.

## Mechanical property

	Ti-6Al-4V (64 Titanium)
Tensile Strength (N/mm <sup>2</sup> )	895 or Higher
0.2% Proof Stress (N/mm <sup>2</sup> )	825 or Higher
Elongation (%)	10 or Higher

• Values in chart are for reference only. They are not guaranteed values.

- Screws made of high strength titanium alloy.
- Specific gravity is approximately by 60% of stainless steel.
- Nonmagnetic.
- Screws with resistance to corrosion and particularly strong against seawater.
- Chemical polishing and brightening processing improve the screw surface. Furthermore, the screws are cleanroom washed, cleanroom packed, and comply with clean specifications that require no oil or foreign matter deposits.
- About the properties of titanium → P.625

## Application

Lightweight applications in automobiles, aircrafts, spacecrafts, and robots FPD production equipment, semiconductor devices, electrical and electronic equipment, and aquatic applications

## Material/Finish

RoHS Compliant

	SNSTG
Main Body	Ti-6Al-4V (64 Titanium)

## Part number specification

### SNSTG-M5-20



Unit : mm

Part Number	M	L										D1	L1	B	L2*1	Tension*2 Rupture Load (N)	Mass (g)		
<b>SNSTG-M3</b>	M3	6	8	10	12	16	20						5.5	3	2.5	Full Thread	5240	0.4 - 0.77	
<b>SNSTG-M4</b>	M4		8	10	12	16	20	25	30				7	4	3	Full Thread	8850	0.94 - 2.1	
<b>SNSTG-M5</b>	M5			10	12	16	20	25	30	35			8.5	5	4	Full Thread	14700	1.5 - 3.6	
<b>SNSTG-M6</b>	M6			10	12	16	20	25	30	35	40	45	50	10	6	5	45(L=50)	20800	2.7 - 7.5
<b>SNSTG-M8</b>	M8					16	20	25	30	35	40	45	50	13	8	6	45(L=50)	33700	6.9 - 14
<b>SNSTG-M10</b>	M10					16	20	25	30	35	40	45	50	16	10	8	45(L=50)	58900	12 - 22

\*1 If the "L" value is not in parentheses, the screw is full thread.

\*2 Values in chart are for reference only. They are not guaranteed values.

Part Number	Qty per pack
<b>SNSTG-M3</b>	1
<b>SNSTG-M4</b>	1
<b>SNSTG-M5</b>	1
<b>SNSTG-M6</b>	1
<b>SNSTG-M8</b>	1
<b>SNSTG-M10</b>	1

Individual Sales → P.794	Cleanroom Wash & Packaging → P.792	Screw Length Adjustment → P.796	Vibration Resistant → P.795	Modification process for captive use → P.791
1 unit in 1 bag	Cleanroom washed and packed	Available / Add'l charge	Available / Add'l charge	Available / Add'l charge