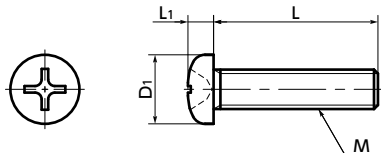




# SPC-P Plastic Screw - Cross Recessed Pan Head Machine Screws - PC

[WEB Selection Tool](#)
[WEB CAD Download](#)


## Material/Finish

	SPC-P
Main body	PC (Polycarbonate) / Transparent*
Heat Resistance Temperature**	115°C

\* **SPC-M1.7-3-P** **SPC-M1.7-4-P** are black.

\*\*This is the value for the plastic material. The maximum operating temperature of the product changes with performance conditions such as tightening torque.

- PC (polycarbonate) has the highest shock resistance of engineering plastics.
- Max. Operating Temperature\*\* (min./max.): -40/115 deg C
- PC has low water absorbency and excellent weather resistance.
- The properties and precautions of plastic screws  
→ P.724
- Application

Electrical and electronic equipment and automobiles

Unit : mm

Part Number	M <b>1</b>		L <b>2</b>										D1	L1	Tension*1 Rupture Load (N)	Torsional*1 Torque (N·m)	Mass (g)	
<b>SPC-M1.7-P</b>	M1.7	3	4											2.5	0.5	47	0.02	0.0066 - 0.0085
<b>SPC-M2-P</b>	M2	3	4	5	6									3.5	1.3	112	0.05	0.02 - 0.028
<b>SPC-M3-P</b>	M3			5	6	8	10	12	15					5.5	2	300	0.22	0.075 - 0.14
<b>SPC-M4-P</b>	M4				6	8	10	12	15					7	2.6	515	0.54	0.16 - 0.27
<b>SPC-M5-P</b>	M5						10	12	15	20				9	3.3	750	1.03	0.38 - 0.56
<b>SPC-M6-P</b>	M6						10	12	15	20	25			10.5	3.9	1080	1.37	0.6 - 1

\*1 Values in chart are for reference only. They are not guaranteed values. The recommendation torque is 50% of the torsional torque.

● M1.7 is black.

Part Number	Qty per pack*1
<b>SPC-M1.7-P</b>	50
<b>SPC-M2-P</b>	50
<b>SPC-M3-P</b>	50
<b>SPC-M4-P</b>	50
<b>SPC-M5-P</b>	50
<b>SPC-M6-P</b>	20

\*1 The minimum order quantity is 1 piece. → P.794

## Part number specification

### SPC-M5-20-P

Product Code **1** **2** Product Code

Order in number of packs.

The minimum order quantity is 1 piece. → P.794

Individual Sales → P.794	Cleanroom Wash & Packaging → P.792	Screw Length Adjustment → P.796	Vibration Resistant → P.795	Modification process for captive use → P.791
Available / Add'l charge	Available / Add'l charge	Available / Add'l charge	Not Available	Not Available