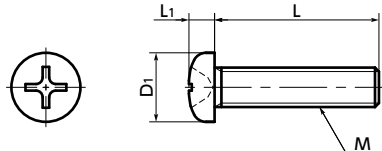




SPS-P Plastic Screw - Cross Recessed Pan Head Machine Screws - PPS



● Material/Finish

	SPS-P
Main body	PPS (Polyphenylene Sulfide) /Bright Light Brown Glass Fiber 40%
Heat Resistance Temperature*	200°C

*This is the value for the plastic material. The maximum operating temperature of the product changes with performance conditions such as tightening torque.

- PPS has excellent heat resistance and chemical resistance and continuous duty temperature of 200 deg C. Under 200 deg C, no oils, fats, or organic solvents dissolve PPS.
- It has high strength, high rigidity, and high heat resistance strength.
- It has high incombustibility that meets V-0 of UL 94.
- The properties and precautions of plastic screws
→ P.724

● Application

FPD production equipment, semiconductor devices, printed circuit board etching devices, metallic surface treatment equipment and facilities, chemical plants, transformers, electrical and electronic equipment, hot water pumps, and chemical pumps

Unit : mm

Part Number	M	L										D1	L1	Tension*1 Rupture Load (N)	Torsional*1 Torque (N·m)	Mass (g)
		1	2	3	4	5	6	8	10	12	15					
SPS-M2-P	M2	4	5	6	8	10	12					3.5	1.3	236	0.08	0.03 - 0.062
SPS-M3-P	M3		5	6	8	10	12	15	20	25	30	5.5	2	570	0.36	0.1 - 0.32
SPS-M4-P	M4			6	8	10	12	15	20	25	30	7	2.6	980	0.71	0.22 - 0.61
SPS-M5-P	M5				8	10	12	15	20	25	30	9	3.3	1570	1.42	0.47 - 1
SPS-M6-P	M6					10	12	15	20			10.5	3.9	2250	2.11	0.83 - 1.2

*1 Values in chart are for reference only. They are not guaranteed values. The recommendation torque is 50% of the torsional torque.

Part Number	Qty per pack*1
SPS-M2-P	20
SPS-M3-P	20
SPS-M4-P	20
SPS-M5-P	10
SPS-M6-P	10

*1 The minimum order quantity is 1 piece. → P.794

● Part number specification

SPS - M5 - 20 - P

Product Code **1** **2** Product Code

Order in number of packs.

The minimum order quantity is 1 piece. → P.794

Individual Sales → P.794	Cleanroom Wash & Packaging → P.792	Screw Length Adjustment → P.796	Vibration Resistant → P.795	Modification process for captive use → P.791
Available / Add'l charge	Available / Add'l charge	Available / Add'l charge	Not Available	Not Available