

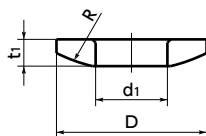


# SQW/SQWS Spherical Washers

WEB Selection  
Tool

WEB CAD  
Download

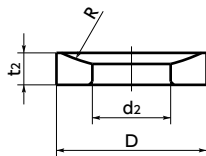
SUS Stainless steel



Convex Side



Concave and Convex Set



Concave Side

- Part number specification

## SQWS-10



- Use a concave and convex set.
- Washers can absorb a tilt of the bolt and bearing surface to a maximum of 2°.

### Application

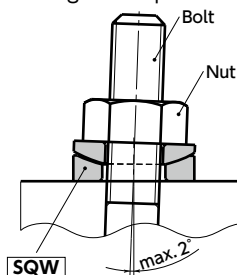
Absorption of misalignment of bolt and bearing surface

### Material/Finish

RoHS Compliant

	SQW	SQWS
Main Body	S45C (Hardness 25 - 30 HRC) Ferrosoferric Oxide Coating (Black)	SUS304

### Usage example



### SQW Steel • Ferrosoferric Oxide Coating

Unit : mm

Part Number	Nominal	D	d1	d2	t1	t2	t	R	Mass (g)	Qty per pack
SQW-3	3	7.3	3.5	3.8	1.3	1.6	2.3	8	0.2	1
SQW-4	4	9.4	4.5	4.9	1.7	2	3	10.2	0.3	1
SQW-5	5	11.5	5.5	6	2.1	2.5	3.7	12.5	0.5	1
SQW-6	6	13	6.6	7.2	2.3	2.8	4.2	15	3	1
SQW-8	8	17	9	9.6	3.1	3.7	5.6	20	7	1
SQW-10	10	22	10.5	12	4	3.5	6	25	13	1
SQW-12	12	26	13.5	15	5	4	7.5	30	22	1

### SQWS Stainless Steel

Unit : mm

Part Number	Nominal	D	d1	d2	t1	t2	t	R	Mass (g)	Qty per pack
SQWS-3	3	7.3	3.5	3.8	1.3	1.6	2.3	8	0.2	1
SQWS-4	4	9.4	4.5	4.9	1.7	2	3	10.2	0.3	1
SQWS-5	5	11.5	5.5	6	2.1	2.5	3.7	12.5	0.5	1
SQWS-6	6	13	6.6	7.2	2.3	2.8	4.2	15	3	1
SQWS-8	8	17	9	9.6	3.1	3.7	5.6	20	7	1
SQWS-10	10	23	11	12	4.1	4.9	7	25	17	1
SQWS-12	12	25	14	15	4.5	5.6	8.4	30	21	1

Individual Sales → P.794	Cleanroom Wash & Packaging → P.792	Screw Length Adjustment → P.796	Vibration Resistant → P.795	Modification process for captive use → P.791
1 pc. in 1 bag	Available / Add'l charge	Not Available	Not Available	Not Available