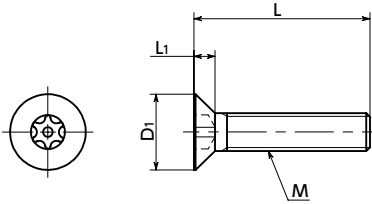


# SRFXS Flat Head Bolt with Hexalobular Socket (with Pin) NEW



WEB Selection Tool
WEB CAD Download
Tamper Resistance
SUS Stainless steel



## ● Related Products

Washer for Flat Head Screw

**SWAS-RW** is available.

➔ P.775



- Flat Head Bolt with a Pin at the center of Hexalobular Socket\*.
  - It cannot be mounted or removed by normal tools.
  - Use a dedicated wrench **SRX** for mounting and removing.
- \*The shape of hexalobular socket is defined in JIS B 1015: 2008 (ISO 10664: 2005) "Hexalobular Socket for Male Screw Parts."

## ● Application

Dismantling equipment/device, tamper-resistance/ anti-theft measures for outdoor facility/security measures/safety measures

## ● Material/Finish

✔ RoHS Compliant

|                          |                     |
|--------------------------|---------------------|
|                          | <b>SRFXS</b>        |
| Main body                | SUS304              |
| Tensile strength ranking | Equivalent to A2-50 |

## ● Part number specification

### SRFXS - M5 - 16

Product Code 1 2

Place order by a bag.

The minimum order quantity is 1 piece. ➔ P.794

Unit : mm

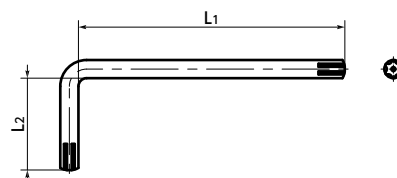
| Part Number     | M <span style="border: 1px solid red; padding: 2px;">1</span> | L <span style="border: 1px solid red; padding: 2px;">2</span> |   |    |    |    |    |    |    | D1 | L1   | Applicable wrench | Hexalobular Socket No. | Mass (g)    |
|-----------------|---|---|---|----|----|----|----|----|----|----|------|-------------------|------------------------|-------------|
|                 |   | 6   | 8 | 10 | 12 | 16 | 20 | 25 | 30 |    |      |                   |                        |             |
| <b>SRFXS-M3</b> | M3  | 6   | 8 | 10 | 12 |    |    |    |    | 6  | 1.75 | SRX-10            | 10                     | 0.48 - 0.72 |
| <b>SRFXS-M4</b> | M4  |   | 8 | 10 | 12 | 16 | 20 |    |    | 8  | 2.3  | SRX-20            | 20                     | 1.0 - 1.9   |
| <b>SRFXS-M5</b> | M5  |   |   | 10 | 12 | 16 | 20 | 25 |    | 10 | 2.8  | SRX-25            | 25                     | 2.1 - 3.9   |
| <b>SRFXS-M6</b> | M6  |   |   | 10 | 12 | 16 | 20 | 25 | 30 | 12 | 3.4  | SRX-30            | 30                     | 3.3 - 7.0   |

| Part Number     | Qty per pack |
|-----------------|--------------|
| <b>SRFXS-M3</b> | 10           |
| <b>SRFXS-M4</b> | 10           |
| <b>SRFXS-M5</b> | 10           |
| <b>SRFXS-M6</b> | 10           |

## ● Dedicated wrench

Unit : mm

| Part Number   | L1 | L2 | Mass (g) | Qty per pack |
|---------------|----|----|----------|--------------|
| <b>SRX-10</b> | 60 | 20 | 3.7      | 1            |
| <b>SRX-20</b> | 67 | 23 | 8.2      | 1            |
| <b>SRX-25</b> | 70 | 25 | 11       | 1            |
| <b>SRX-30</b> | 81 | 28 | 20       | 1            |
| <b>SRX-40</b> | 88 | 31 | 32       | 1            |



1 Individual Sales ➔ P.794
Cleanroom Wash & Packaging ➔ P.792
Screw Length Adjustment ➔ P.796
Vibration Resistant ➔ P.795
Modification process for captive use ➔ P.791

Available / Add'l charge
Available / Add'l charge
Available / Add'l charge
Available / Add'l charge
Not Available