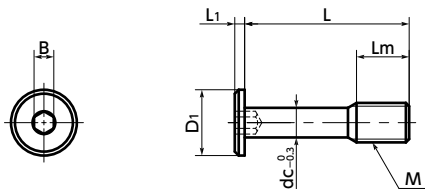




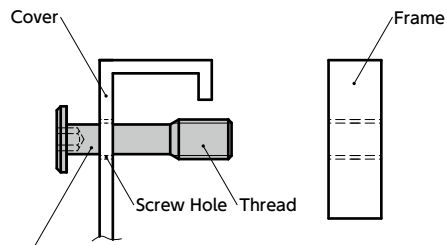
SSCHS Socket Head Cap Captive Screws with Special Low Profile

WEB Selection Tool
 WEB CAD Download
 Protrusion
 SUS Stainless steel



⚠ Precautions for Use

- The inner diameter of the screw hole of the cover must be equal or larger than dimension d.
- The thickness of the cover must be 0.8 mm or more.
- Installation example
Make a screw hole in the cover, then pass **SSCHS** thread through it. Even when the screw is removed from the frame, **SSCHS** does not fall out from the cover because **SSCHS** thread catches on the screw hole of the cover.



SSCHS Socket Head Cap Captive Screw with Special Low Profile

- The shape of the screws prevent them from falling out and being lost. They are intended to fix protective and inspection covers that are frequently installed and removed.
- These screws are intended for the reduction of the size of machinery and device and applications with limited overhead space.
- These items comply with CE marking requirements. → P.681

• Application

Securement of protective and inspection covers and compliance with CE marked products
Machine tools, food industry machines, and electrical and electronic equipment

• Material/Finish

RoHS Compliant

	SSCHS
Main Body	SUSXM7 (S.S. grade : A2)
Strength Class	A2-40

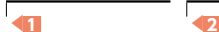
Unit : mm

Part Number	M	L						Lm	D1	L1	B	dc	Mass (g)	
SSCHS-M3	M3	8	10	12				4	6	1.3	1.5	2.2	0.53 - 0.69	
SSCHS-M4	M4		10	12	16			5	8	1.5	2	3	1.2 - 1.6	
SSCHS-M5	M5			12	16	20		6	9	1.5	3	3.9	1.5 - 2.5	
SSCHS-M6	M6			12	16	20	25	30	8	10	1.5	3	4.5	2.3 - 5.5
SSCHS-M8	M8				16	20	25	30	10	13	1.5	4	6.3	5.4 - 10

Part Number	Qty per pack
SSCHS-M3	1
SSCHS-M4	1
SSCHS-M5	1
SSCHS-M6	1
SSCHS-M8	1

• Part number specification

SSCHS-M6-12



Individual Sales → P.794	Cleanroom Wash & Packaging → P.792	Screw Length Adjustment → P.796	Vibration Resistant → P.795	Modification process for captive use → P.791
1 unit in 1 bag	Available / Add'l charge	Not Available	Not Available	with Captive Processing