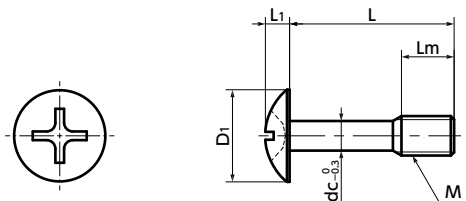




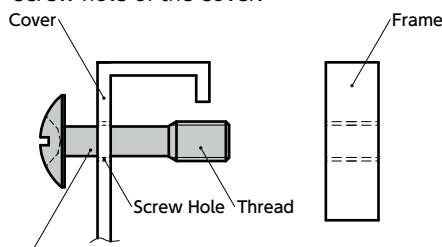
SSCMS Cross Recessed Truss Head Captive Screws

WEB Selection Tool WEB CAD Download SUS Stainless steel



● Installation example

Make a screw hole in the cover, then pass **SSCMS** thread through it. Even when the screw is removed from the frame, **SSCMS** does not fall out from the cover because **SSCMS** thread catches on the screw hole of the cover.



SSCMS Cross Recessed Truss Head Captive Screw

- The shape of the screws prevent them from falling out and being lost. They are intended to fix protective and inspection covers that are frequently installed and removed.
- These screws have large heads that decorate attachment surfaces beautifully.
- These items comply with CE marking requirements. → P.681

● Application

Securement of protective and inspection covers and compliance with CE marked products
Machine tools, food industry machines, and electrical and electronic equipment

● Material/Finish

RoHS Compliant

	SSCMS
Main Body	SUSXM7 (S.S. grade : A2)
Strength Class	A2-50

⚠ Precautions for Use

- The inner diameter of the screw hole of the cover must be equal or larger than dimension d.
- The thickness of the cover must be 0.8 mm or more.

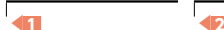
Unit : mm

Part Number	M	L								Lm	D1	L1	dc	Mass (g)
SSCMS-M3	M3	8	10	12	16					4	6.9	1.9	2.2	0.61 - 0.94
SSCMS-M4	M4		10	12	16	20				5	9.4	2.5	3	1.4 - 2.2
SSCMS-M5	M5			12	16	20	25			6	11.8	3.1	3.9	3.1 - 4.7
SSCMS-M6	M6			12	16	20	25	30		8	14	3.7	4.6	4.4 - 7.5
SSCMS-M8	M8				16	20	25	30	40	10	17.8	4.8	6.3	10 - 18

Part Number	Qty per pack
SSCMS-M3	1
SSCMS-M4	1
SSCMS-M5	1
SSCMS-M6	1
SSCMS-M8	1

● Part number specification

SSCMS-M6-12



1 Individual Sales → P.794	Cleanroom Wash & Packaging → P.792	Screw Length Adjustment → P.796	Vibration Resistant → P.795	Modification process for captive use → P.791
1 unit in 1 bag	Available / Add'l charge	Not Available	Not Available	with Captive Processing