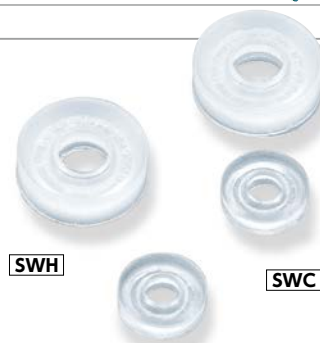
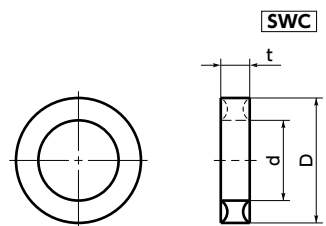
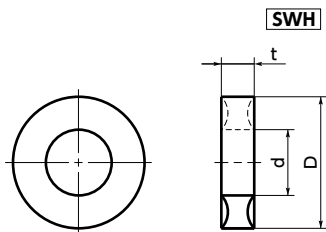




SWH/SWC Locking and Sealing Rings

WEB Selection Tool WEB CAD Download



- For sealing of the bolt tightening section.
- **SWH** — For hex head screws and hex nuts
- **SWC** — For socket head cap screws
- Max. Operating Temperature : -60 to 80 deg C
- Also, **SWT** Toothed Washer for locking and sealing rings is available.



Application

Thread Locking and Thread Sealing

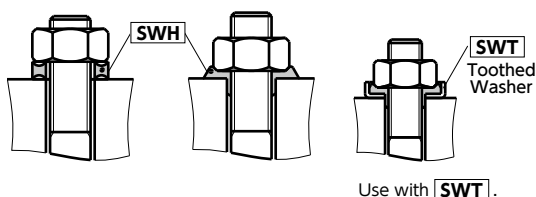
Material/Finish

RoHS Compliant

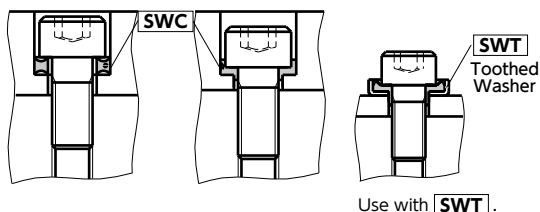
	SWH	SWC
Main Body	Polyamide (White)	Polyamide (White)

Installation Method

- Before Tightening
- After Tightening



- Before Tightening
- After Tightening



Part number specification

SWC-10



Order in number of packs.
The minimum order quantity is 1 piece. → P.794

SWH For Hex head screws and hex Nuts

Unit : mm

Part Number	Nominal	d	D	t	Mass (g)	Qty*1 per pack
SWH-3	3	3.2	8	2.2	0.1	10
SWH-4	4	4.15	9.5	2.6	0.1	10
SWH-5	5	5.15	10.6	3	0.2	10
SWH-6	6	6.5	12.7	3.5	0.3	10
SWH-8	8	8.1	16.2	4	0.6	5
SWH-10	10	10.2	19.6	4.5	1	5
SWH-12	12	12.2	23.6	5	1.5	5

*1 The minimum order quantity is 1 piece. → P.794

SWC For Socket Head Cap Screws

Unit : mm

Part Number	Nominal	d	D	t	Mass (g)	Qty*1 per pack
SWC-4	4	4.1	7.7	2	0.1	10
SWC-5	5	5.15	9.8	3	0.2	10
SWC-6	6	6.5	10.5	2.5	0.2	10
SWC-8	8	8.1	14	3.3	0.3	10
SWC-10	10	10.2	17	3.8	0.5	10
SWC-12	12	12.2	19	4.4	0.7	5

*1 The minimum order quantity is 1 piece. → P.794