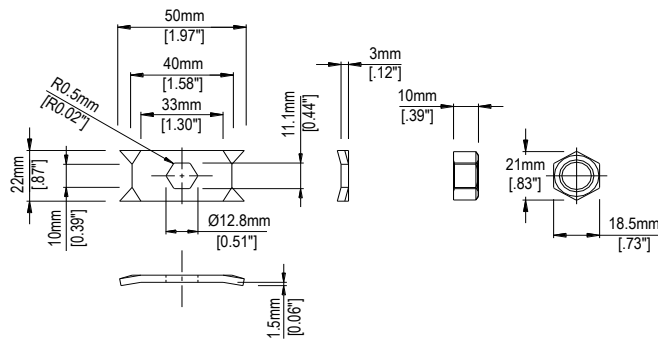


# Mounting Brackets High Torque



## P-0B1 / P-0C1

Applicable Model: PM486FP



P-0B1 (hex flat up) shown above

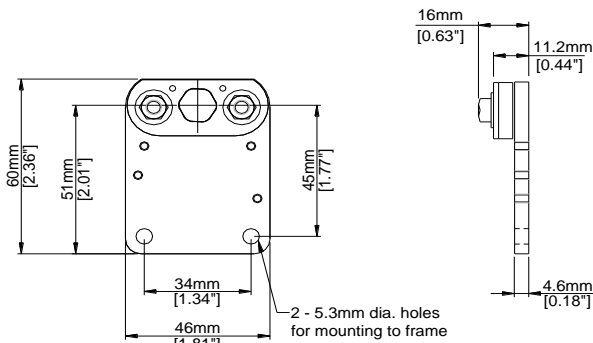
P-0C1 (hex point up) also available

### Features:

- Provided as an accessory for PM486FP
- Low profile and designed for maximum holding of threaded hex shafts
- Supplied with nut (M12 x 1.25)
- Two required for each PM486FP
- Nuts must be torqued to 22.1 lb-ft (30 Nm)

## MBB-071 / MBB-081

Applicable Model: PM486FP with JR shafts



MBB-071 (hex flat up) shown above

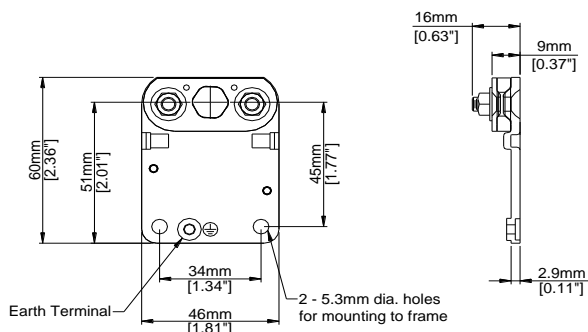
MBB-081 (hex point up) also available

### Features:

- Provided as an accessory for PM486FP with JR shafts
- The shaft hole of the middle plate is rotated a few degrees which grips the shaft securely once the top plate and nuts are tightened to the correct torque.
- Two required for each PM486FP
- Nuts must be torqued to 2.2 lb-ft (3 Nm)
- Supplied with M5 x 15 pan head phillips mounting bolts and hardware

## A-071-G2 / A-081-G2

Applicable Model: PM486FH and PM486FP with JR shafts



A-071-G2 (hex flat up) shown above

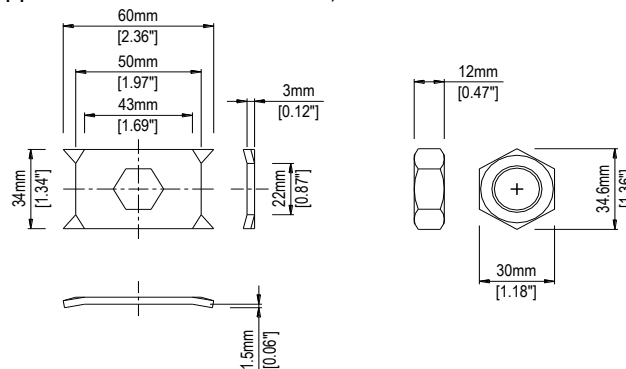
A-081-G2 (hex point up) also available

### Features:

- Provided as an accessory for PM486FH and PM486FP with JR shafts
- The shaft hole of the middle plate is rotated a few degrees which grips the shaft securely once the top plate and nuts are tightened to the correct torque.
- Two required for each PM486FH and PM486FP
- Nuts must be torqued to 2.2 lb-ft (3 Nm)
- Supplied with M5 x 15 pan head phillips mounting bolts and hardware

## P-0D1 / P-0E1

Applicable Models: PM635FS, PM635KE



### Features:

- Provided as an accessory for PM635FS
- Low profile and designed for maximum holding of threaded hex shafts
- Supplied with nut (M20 x 1.5)
- One required for each PM635
- Nuts must be torqued to 110.6 lb-ft (149.5 Nm)

P-0D1 (hex flat up) shown

P-0E1 (hex point up) also available