

# Micro Fiber Heads

## HFS series

Refer to our website for product details.

CCS HFS

Search



You can also use your smartphone or cell phone.

Use a search engine.

### LED Fiber Light (straight) that uses original converging technology



HFS-14-500

Model name	HFS-14-500
Fiber material	Multicomponent glass
Case material	Aluminum alloy
Flexible tube material	SUS
Strand diameter (μm)	50
Fiber arrangement	Random
Numerical aperture (NA)	0.56
Receiving angle (°)	68
Transmitted wavelength (nm)	300 to 1,300
Minimum bending radius (mm)	50

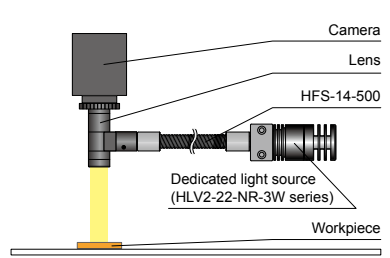
**Applications** As a light source for a telecentric lens, visual inspection for chips, and alignment mark imaging, etc. Common for the HFS and HFR series

### Characteristics

This is a unique Light Unit system that melds the strengths of both LEDs and fibers. The HFS series, a straight type, is lightweight, compact, and easy to manage, and therefore can be used in a variety of applications.

We accept custom orders. Please feel free to inquire. • Change to length, etc.

#### Example configuration (HFS-14-500)



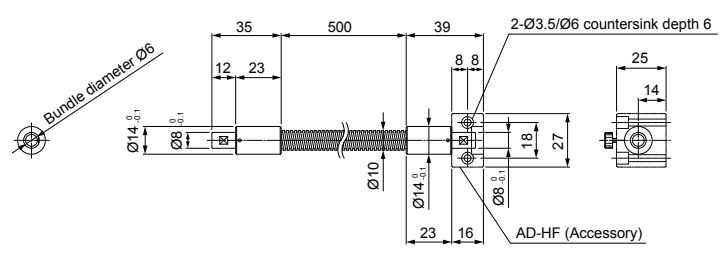
#### It can be used in a variety of situations



Dedicated Light Source (HLV2-22-NR-3W series) Product Page ▶ P.119

### Dimensions (mm)

HFS-14-500



### Common specifications for the HFS/HFR series

Model name	Operating temperature and humidity	Storage temperature and humidity	Weight
HFR-25-10	Temperature: 0 to 40°C, Humidity: 20% to 70%RH (with no condensation)	Temperature: -10 to 60°C, Humidity: 20% to 70%RH (with no condensation)	60 g
HFR-25-30			250 g
HFR-40-20			115 g
HFS-14-500			

We have various materials.

- PDF Drawings
- DXF Drawings
- 3D CAD
- Instruction Guides
- Product Filers
- Imaging Samples
- Data Sheets
- Examples of Custom Ordered Products

Download here.  
<http://www.ccs-grp.com/dl/>