

# S3 & M3 Series



S3-M3 series is made in die-cast aluminum and is foot switch for noble high credibility and small apparatus.

### Features

- The unique design, a beautiful noble color is perfect to every device.
- Most appropriate to pedal part is low, long in wide timework.
- It can correspond to a usage, which is property of inclusion switch and the combination of a faculty and wide.
- S3 and M3 can select a to step on except fulcrum section because of being the same size, too.
- There is attachment base. (option)

### Major Applications

- Medical appliances
- Electronic device
- Public welfare device
- Sewing device
- Education device
- Each electric device,
- Others industry device etc.

### Part Numbering

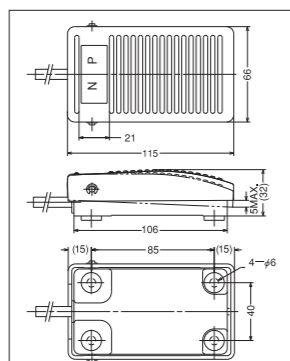
OFL - [ ] - S3&M3

① ② ③ ④

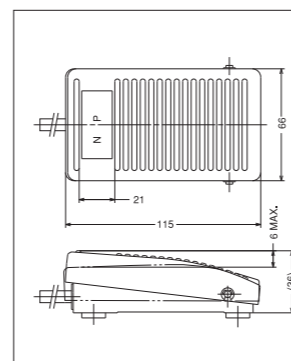
- ① OJIDEN FOOT LIMITSWITCH is shown.
  - ② The property of a switch, pole number and the faculty are shown.
  - ③ S3 or M3 series is shown.  
S3...Forward fulcrum  
M3...Backward fulcrum
  - ④ With a protective cover (C or CS) is shown.
- ※ ② The characteristic and performance of a built-in switch should consult P.32.

### Die-cast aluminum-made mini type

#### • OFL-[ ]-S3 Type (Forward fulcrum)

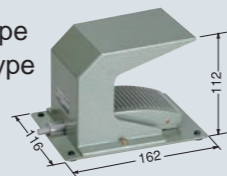


#### • OFL-[ ]-M3 Type (Backward fulcrum)

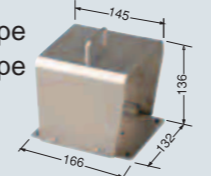


With protection cover (Option)

- OFL-[ ]-S3C Type
- OFL-[ ]-M3C Type

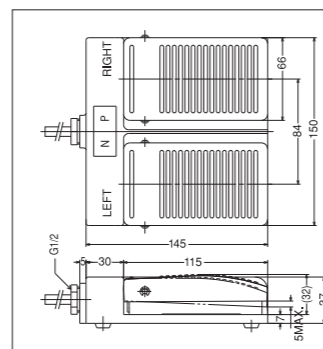


- OFL-[ ]-S3CS Type
- OFL-[ ]-M3CS Type



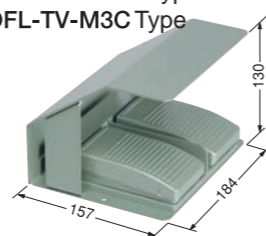
### Twin Type

- OFL-T-[ ]-S3 Type (Forward fulcrum)
- OFL-T-[ ]-M3 Type (Backward fulcrum)



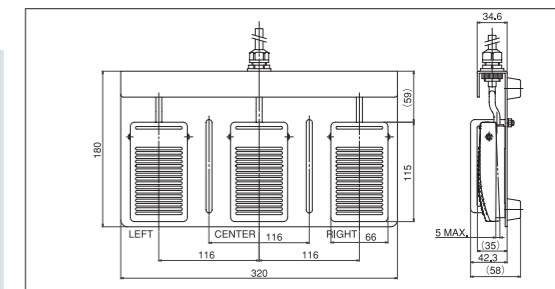
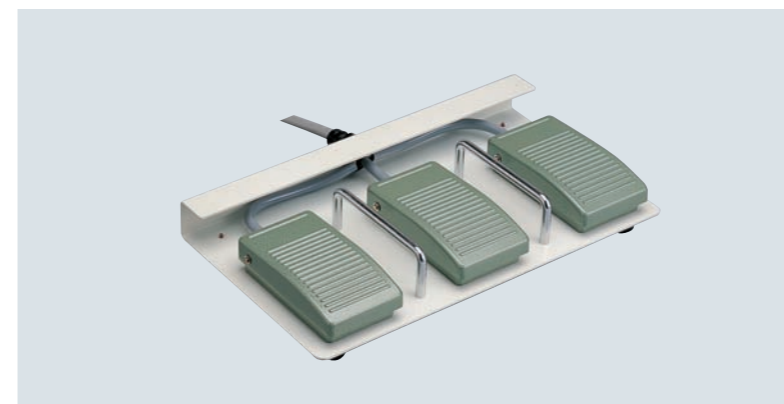
Twin type with protection cover (Option)

- OFL-TV-S3C Type
- OFL-TVG-S3C Type
- OFL-TV-M3C Type

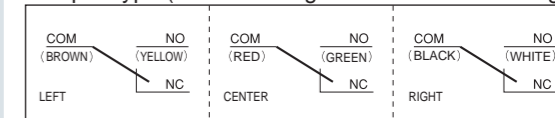


### Triple Type

#### • OFL-H-[ ]-S3 Type



#### • Triple Type (contact configuration and cord coding)



### S3 & M3 series

Type			Protection Cover		Function		Rating	Switch	Contact	VCTF cord	N	g	
①	②	③	C	CS	Momentary	Alternate							
OFL-V-S3	OFL-V-M3	○ ○	○	○	●	—	6A-250VAC	MICRO Switch  V	1a	VFF 0.75mm <sup>2</sup> 2c 2m	10 (1kgf)	280	
OFL-1V-S3	OFL-1V-M3	○ ○	○	○	●	—			1c	0.75mm <sup>2</sup> 3c 1m			
OFL-2V-S3	OFL-2V-M3	○ ○	○	○	●	—			2a	0.75mm <sup>2</sup> 4c 1m			
OFL-2V-S3	—	○ ○	○	○	●	—			1a for each position	0.75mm <sup>2</sup> 4c 1m	1st position 8 2nd position 34	300	
OFL-TV-S3	OFL-TV-M3	○ ○	○	—	●	—				1c for each side	0.75mm <sup>2</sup> 6c 1.5m		10 (1kgf)
OFL-HV-S3	OFL-HV-M3	—	—	—	●	—			1a for each side	0.75mm <sup>2</sup> 6c 1.5m	2,360		
OFL-BS-S3	—	○ ○	○	○	—	●	3A-250VAC	Z	1c	0.75mm <sup>2</sup> 3c 1m	14 (1.4kgf)	300	
OFL-VG-S3	OFL-VG-M3	○ ○	○	○	●	—	0.1A-30VDC (Minimum Load 5mA-6 2mA-12 VDC 1mA-24	V (gold clad contact)	1c	0.5mm <sup>2</sup> 3c 2m	10 (1kgf)	330	
OFL-2VG-S3	OFL-2VG-M3	○ ○	○	○	●	—			2a	0.75mm <sup>2</sup> 4c 1m			300
OFL-TVG-S3	OFL-TVG-M3	○ ○	○	—	●	—			1c for each side	0.75mm <sup>2</sup> 6c 1.5m			1,160
OFL-HVG-S3	OFL-HVG-M3	—	—	—	●	—			1a for each side	0.75mm <sup>2</sup> 6c 1.5m			2,360
OFL-TV-S3	OFL-TV-M3	○ ○	○	—	●	—			1c for each side	0.75mm <sup>2</sup> 6c 1.5m			1,160

### Seal structure switch inclusion type

(IP class as indicated or equivalent)

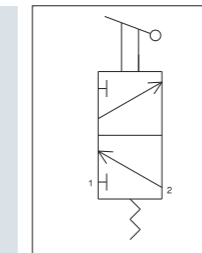
OFL-VG5-S3	OFL-VG5-M3	○ ○	○	○	●	—	0.1A-30VDC	V (IP67)	1c	0.75mm <sup>2</sup> 3c 25cm	10 (1kgf)	220
OFL-55-S3	—	○ ○	○	○	●	—	6A-250VAC	Z (IP54)	1c	1.25mm <sup>2</sup> 3c 2.5m	12 (1.2kgf)	530

- ※ If marked ○, the type permits the use of the cover; if marked —, the type may require modification. CS: new protection cover (stainless steel, optional; 1,310 g in weight, approx.)
- ※ If OFL-VG5-S3 or M3, a twin/triple type may also be made available.

### Foot Air Valve

Foot switch that included small size 3-direction valve that controls in air pressure equal to micro switch of electric device.

#### • OFL-AV-S3 Type (Forward fulcrum)



#### Features

- Handling is easy because have been small and be light.
- Big flux is obtained in spite of being small.
- There is not the necessity of refueling.
- Plumbing is one touch board and is only plugging φ4 nylon tube.
- Size is same S3.

### S3 Foot Air Valve

Type	Protection Cover		Inclusion Valve	Function	Pressure Pa	Effective cross-sectional area mm <sup>2</sup>	Flow volume NL/min	Operating temperature °C	Connection diameter φ	Operating force N	Weight g
	C	CS									
OFL-AV-S3	○	○	MS-01-PP	●	0~800kPa	2.5	100NL/min	5~60	φ4 (tubing, snap-on joint)	35 (3.6kgf)	360