

PASCAL®

TRAVELING CLAMP

Equip your press machines with advanced time saving automatic die clamping systems that dramatically reduce downtime and allow you to use new processing methods that increase productivity.

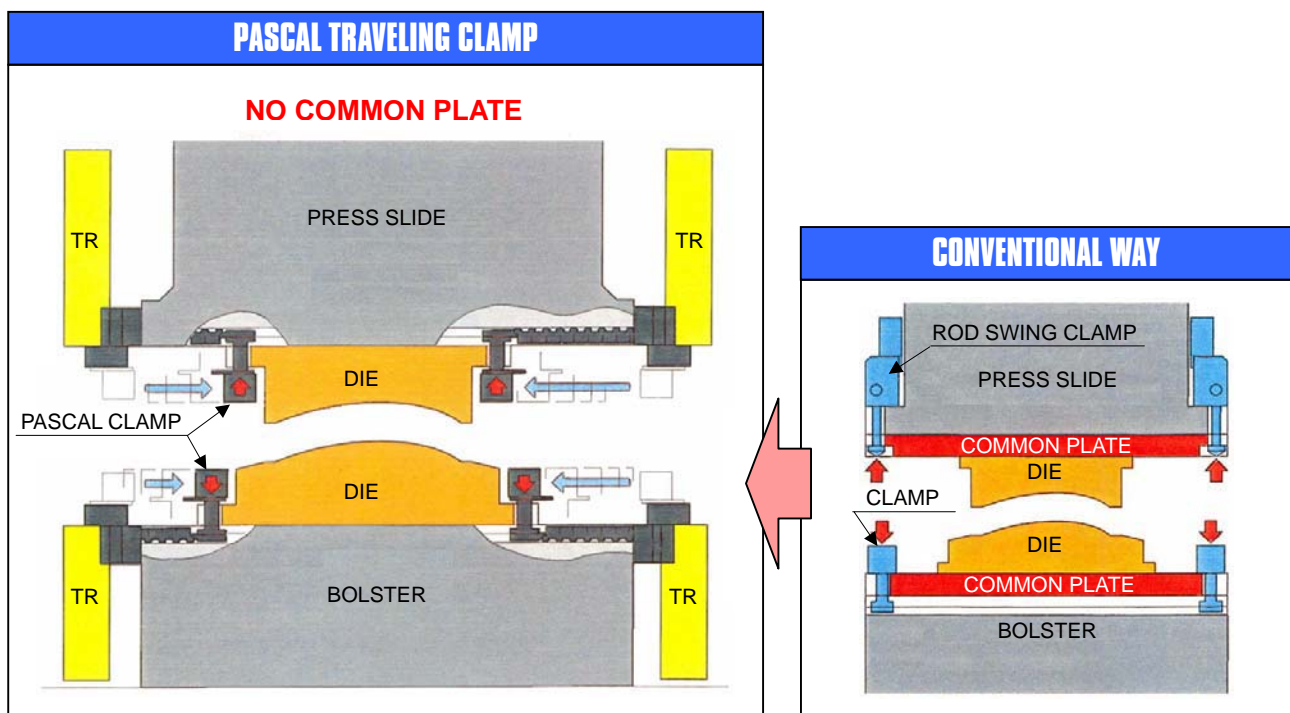


Pascal
corporation

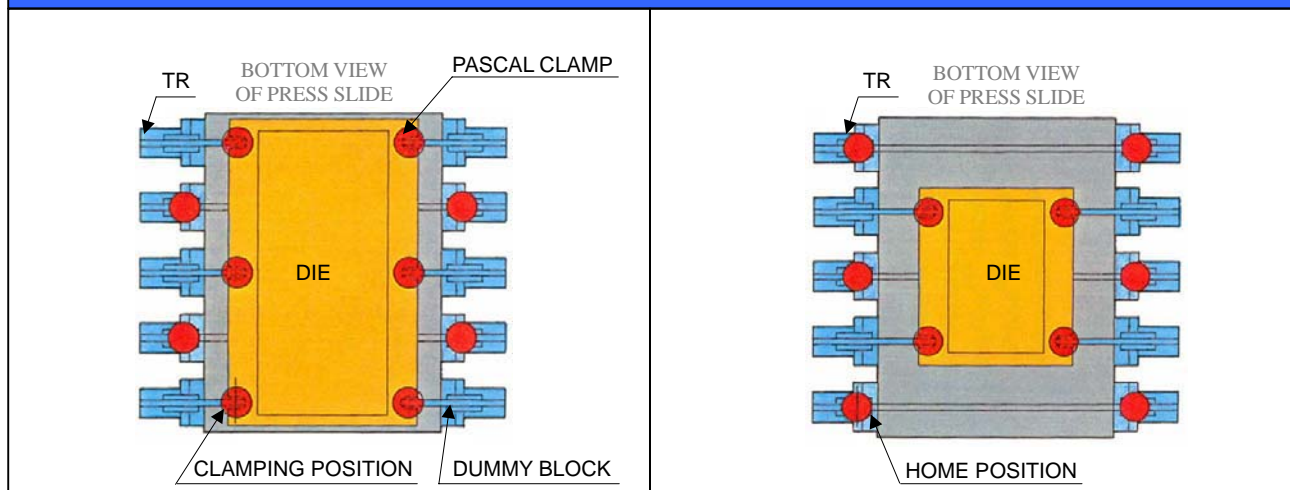
www.pascaleng.co.jp

Pamphlet PA-125E REV.0 2003.07

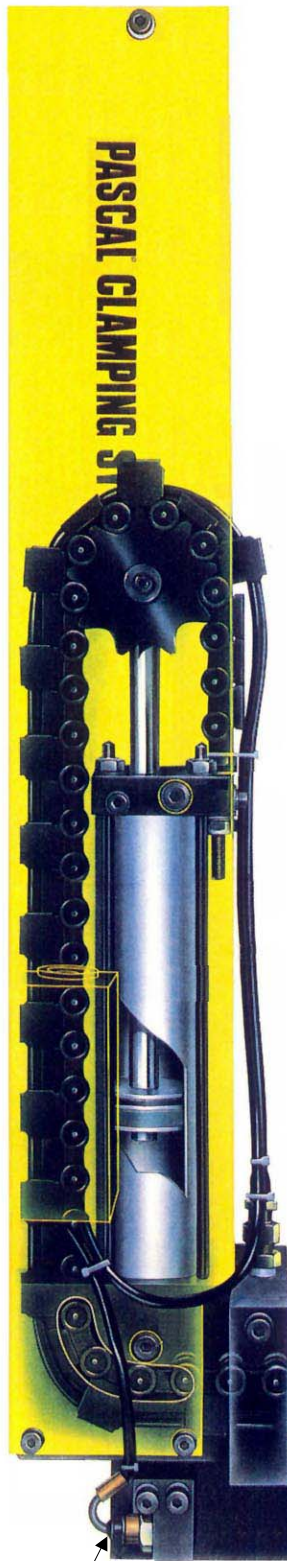
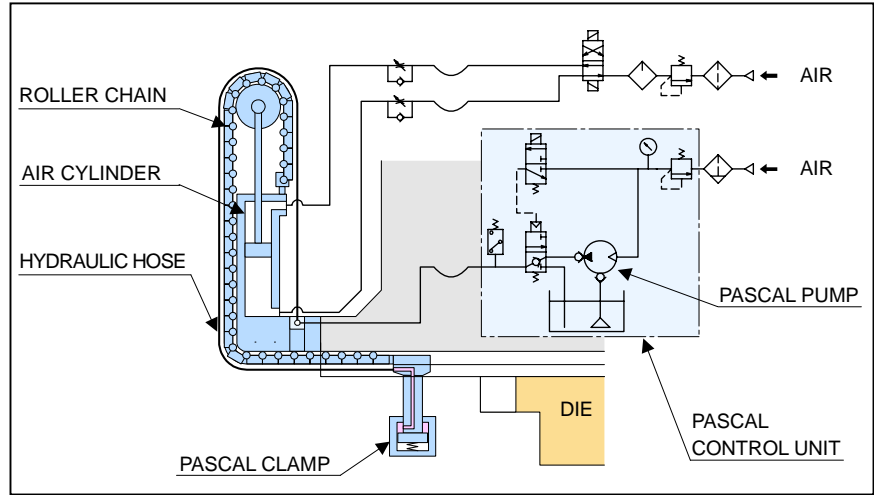
PASCAL TRAVELING CLAMP TR series are the most advanced die clamping system made, and the hydraulic clamps are automatically carried to the die to clamp it through the T-slots. The introduction of TR series offers major cost saving by eliminating the common plates. The die can be rigidly mounted at the central part of the press and it gives the high precise and stable metal stamping compared with the former clamping at the edge of the common plate. With over 20,000 units in use worldwide TR series are the proven products in the metal stamping industry especially in automobile industry. TR series are easily retrofitted to existing press machines.



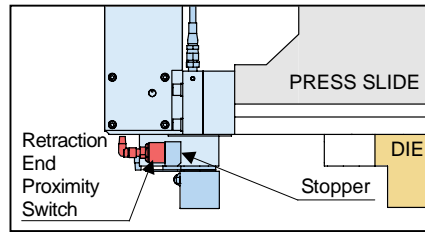
The die clamping pattern can be selected according to the variable die size and the U-cut position.



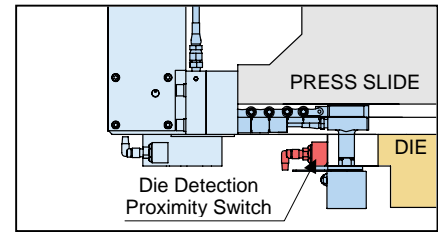
System Diagram



Retraction End Proximity Switch

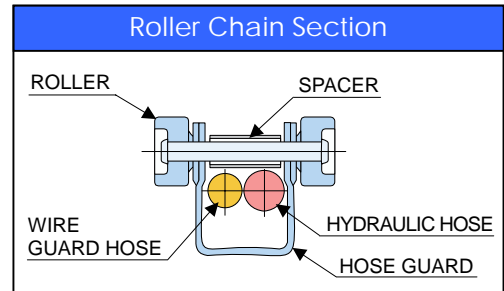


Die Detection Proximity Switch



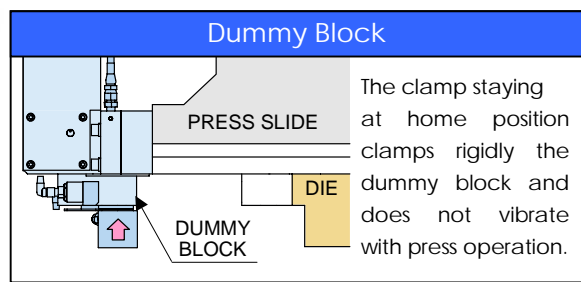
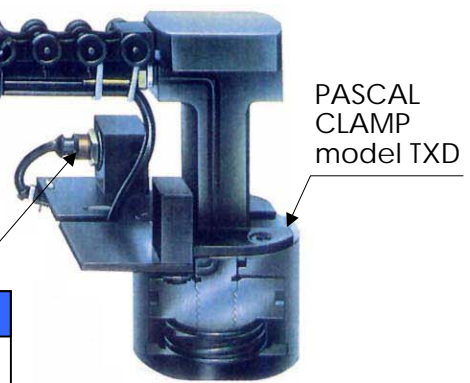
TR series has a simple and durable mechanism and withstands shock and vibration under severe operating conditions of a press

JAPAN PAT. 1739284
1815288
1477239
U.S. PAT. 4830337
GERMANY PAT. 3501524



Retraction End Proximity Switch

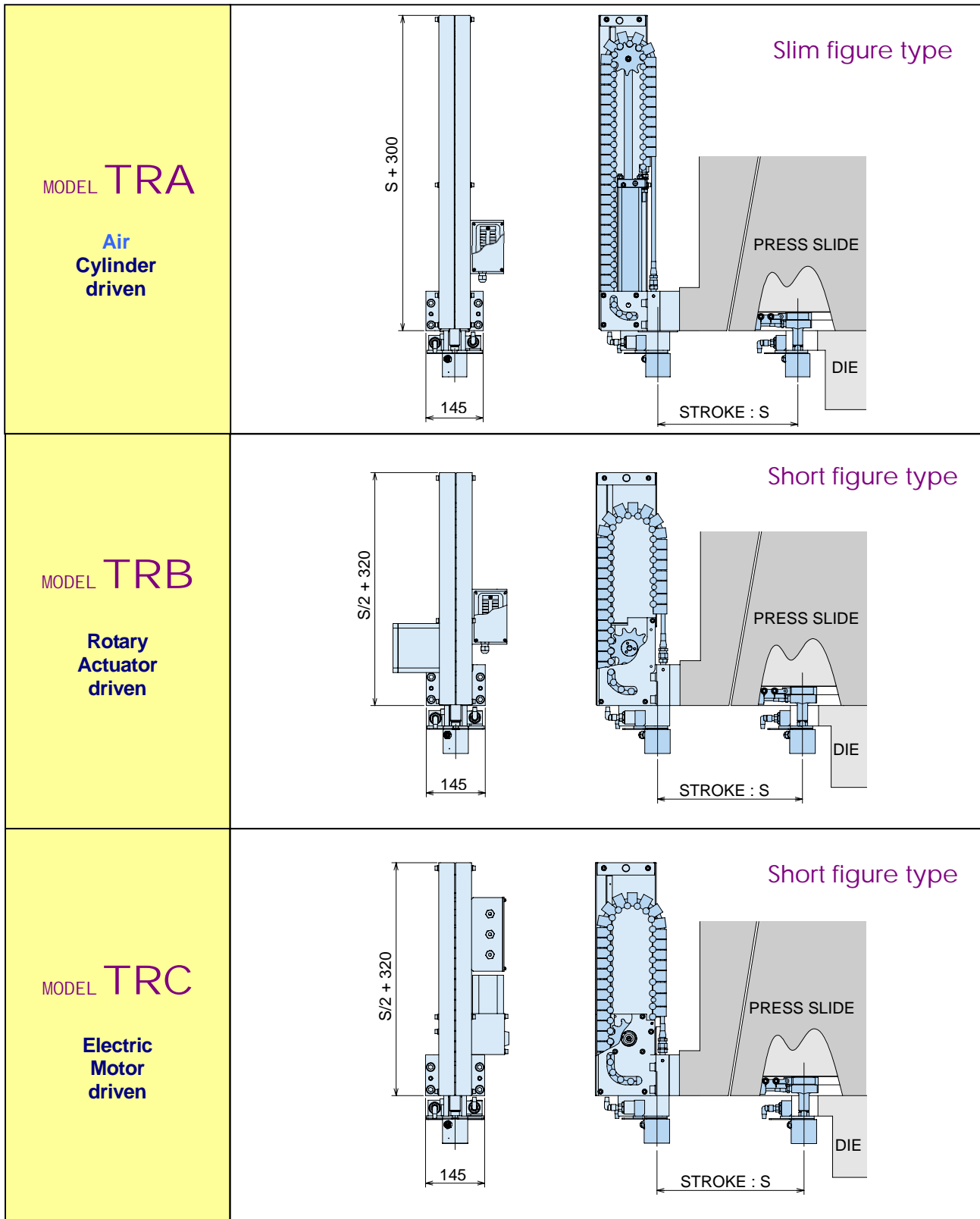
Die Detection Proximity Switch



CLAMPING FORCE
4 tonf
6.3 tonf
10 tonf

Three kinds of clamp sliding methods are provided as follows ; -

PAGE 3

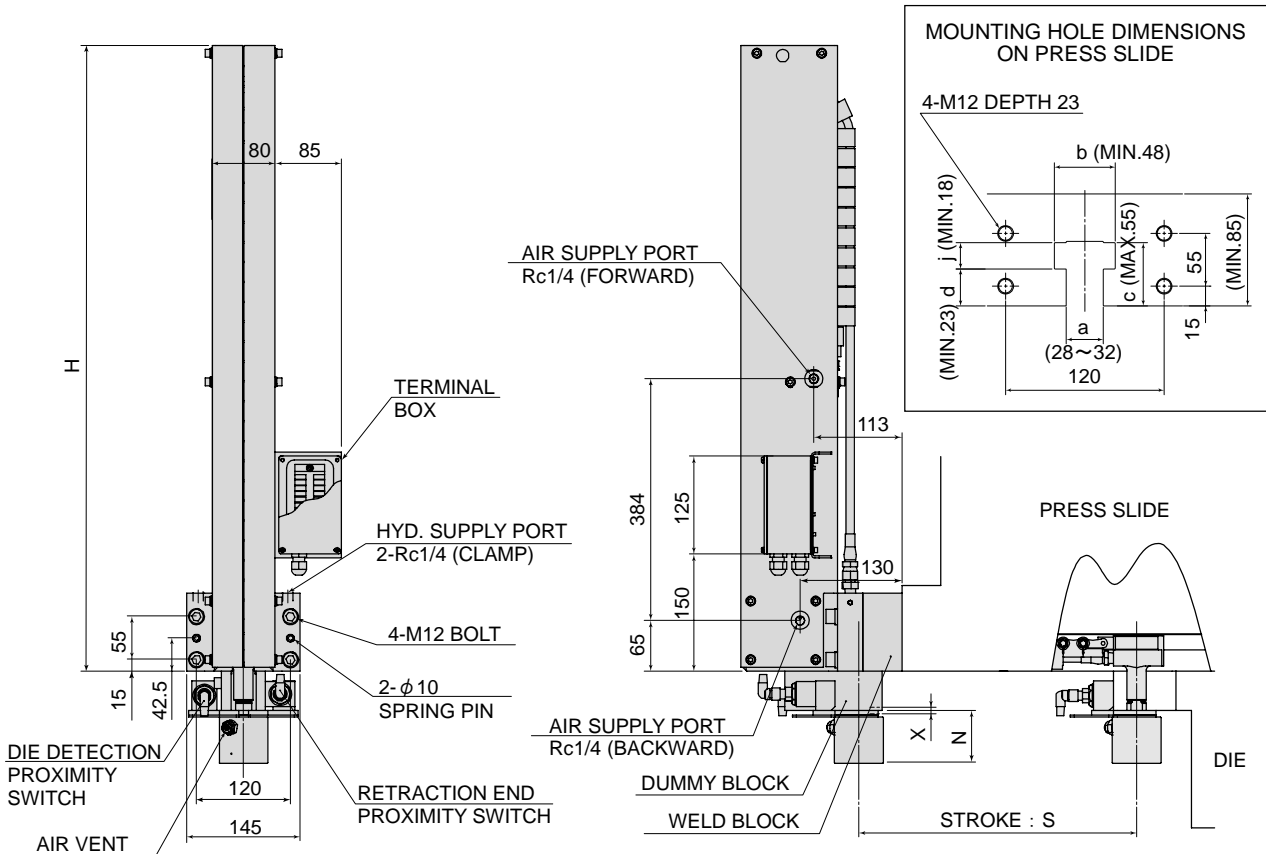


TR A - X06 - 800

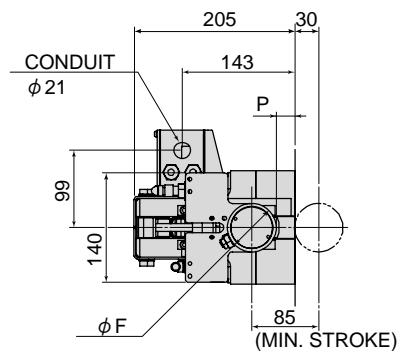
①
②
③

- ① Model A, B, C (See above)
- ② Clamp Model X04 : Model TXD4 (Clamping force 4.0 tonf)
X06 : Model TXD6 (Clamping force 6.3 tonf)
X10 : Model TXD10 (Clamping force 10.0 tonf)
- ③ Sliding stroke in mm

■ DIMENSIONS



(mm)			
STROKE : S	H	STROKE : S	H
400	700	900	1200
500	800	1000	1300
600	900	1100	1400
700	1000	1200	1500
800	1100	1300	1600



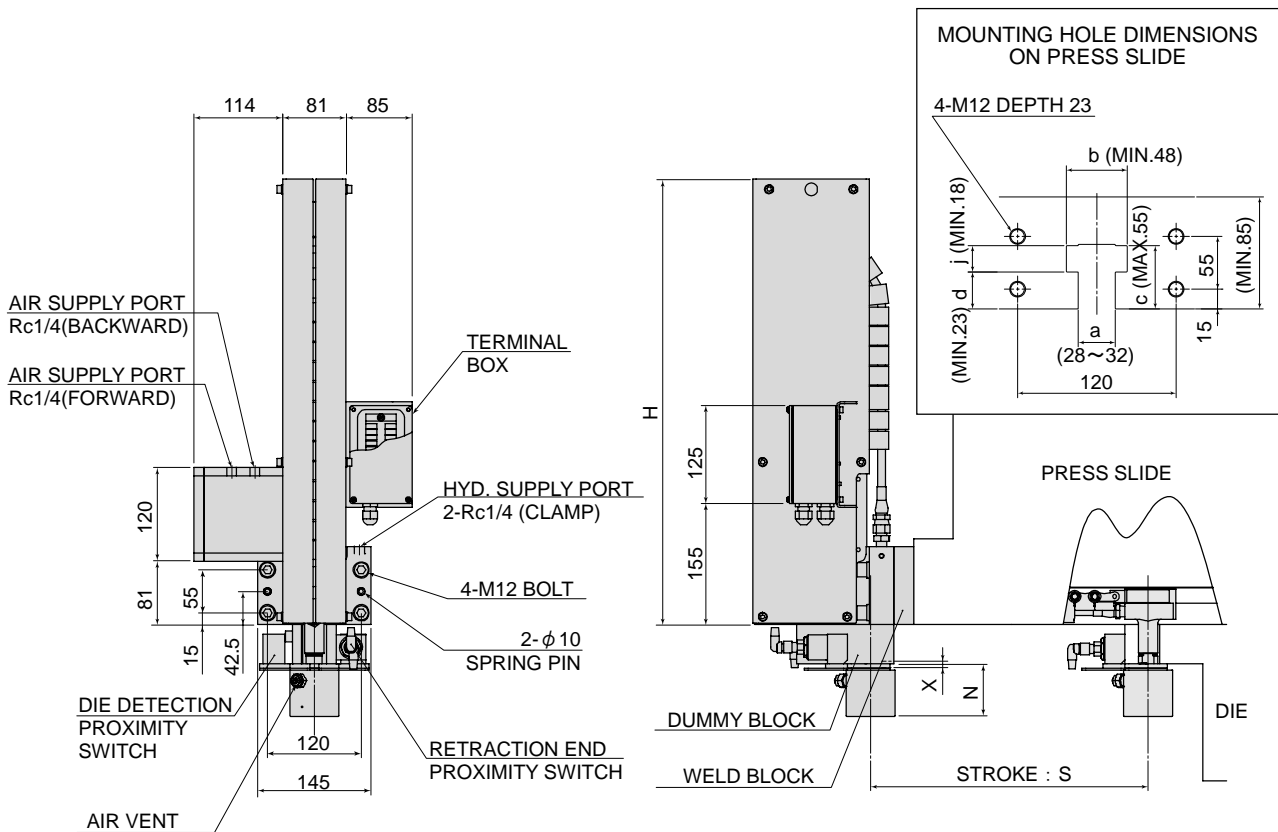
■ SPECIFICATIONS

CLAMP MODEL		TXD 4	TXD 6	TXD 10
CLAMPING FORCE	* 1	4 tonf { 39.2 kN, 4.41 USton }	6.3 tonf { 61.7 kN, 6.94 USton }	10 tonf { 98.0 kN, 11.0 USton }
CLAMPING STROKE	: X	8 mm (Full Stroke)		
SLIDING STROKE	: S	400 ~ 1300 mm, every 100 mm		
SLIDING FORCE	* 2	20 kgf { 196 N }		
SLIDING SPEED		4 ~ 6 m / min		
DIMENSIONS	F	62 mm	78 mm	98 mm
	N	67.2 mm	73.2 mm	79.2 mm
	P	24 mm	16 mm	6 mm

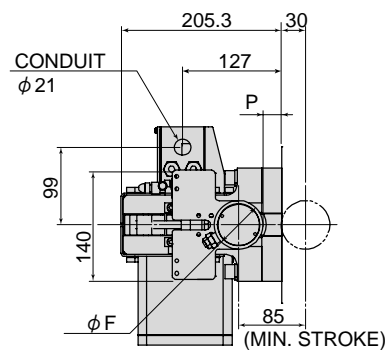
* 1: Hydraulic pressure 250 kgf/cm² { 24.5 MPa, 3560 psi }

* 2: Air pressure 4 kgf/cm² { 0.39 MPa, 57 psi }

■ DIMENSIONS



(mm)			
STROKE : S	H	STROKE : S	H
~ 400	520	625 ~ 700	670
425 ~ 500	570	725 ~ 800	720
525 ~ 600	620	825 ~ 900	770



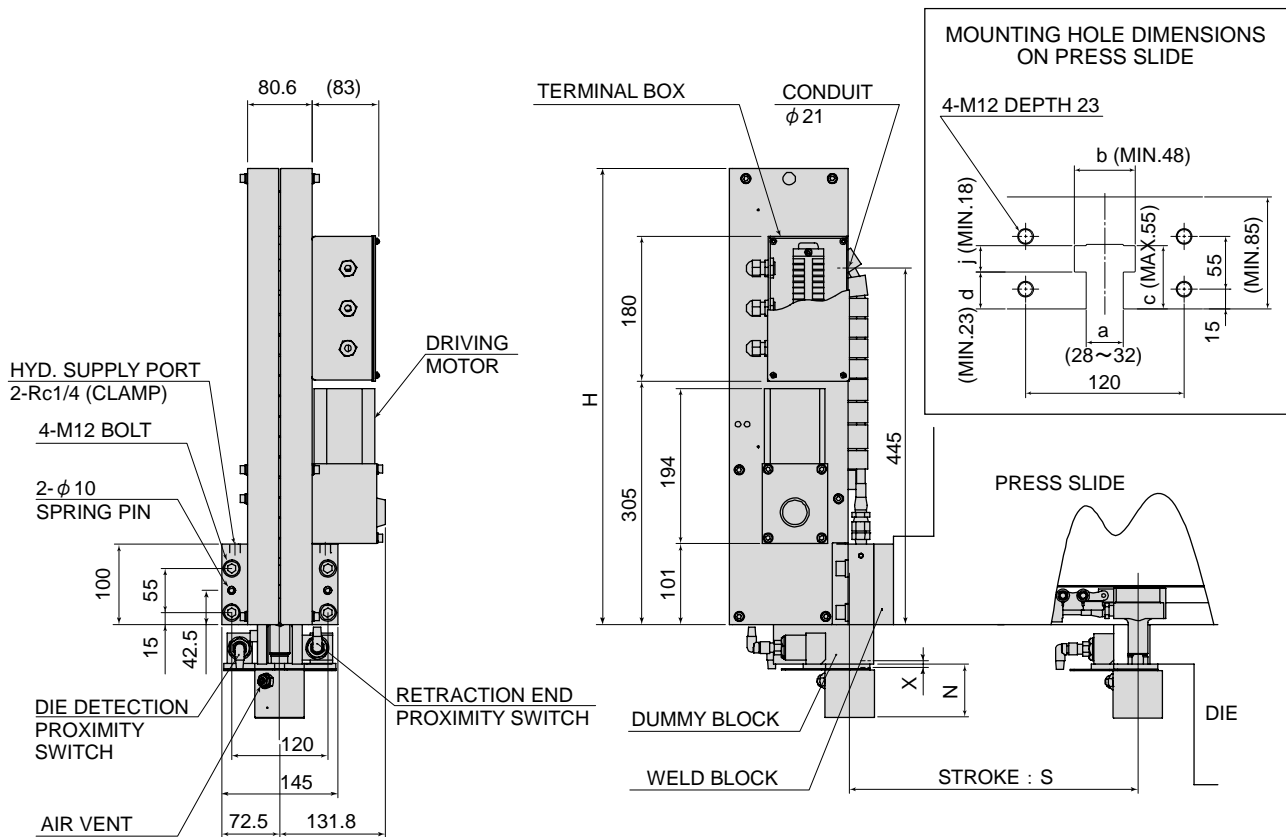
■ SPECIFICATIONS

CLAMP MODEL		TXD 4	TXD 6	TXD 10
CLAMPING FORCE	* 1	4 tonf { 39.2 kN, 4.41 USton }	6.3 tonf { 61.7 kN, 6.94 USton }	10 tonf { 98.0 kN, 11.0 USton }
CLAMPING STROKE	: X	8 mm (Full Stroke)		
SLIDING STROKE	: S	400 ~ 900 mm, every 25 mm		
SLIDING FORCE	* 2	10 kgf { 98 N }		
SLIDING SPEED		4 ~ 6 m / min		
DIMENSIONS	F	62 mm	78 mm	98 mm
	N	67.2 mm	73.2 mm	79.2 mm
	P	24 mm	16 mm	6 mm

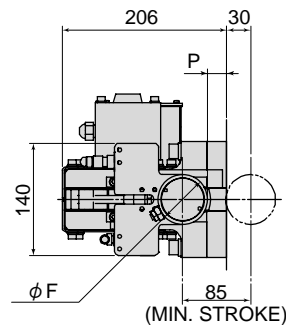
* 1: Hydraulic pressure 250 kgf/cm² { 24.5 MPa, 3560 psi }

* 2: Air pressure 4 kgf/cm² { 0.39 MPa, 57 psi }

■ DIMENSIONS



(mm)			
STROKE : S	H	STROKE : S	H
~ 400	520	625 ~ 700	670
425 ~ 500	570	725 ~ 800	720
525 ~ 600	620	825 ~ 900	770



■ SPECIFICATIONS

CLAMP MODEL		TXD 4	TXD 6	TXD 10
CLAMPING FORCE	* 1	4 tonf { 39.2 kN, 4.41 USton }	6.3 tonf { 61.7 kN, 6.94 USton }	10 tonf { 98.0 kN, 11.0 USton }
CLAMPING STROKE	: X	8 mm (Full Stroke)		
SLIDING STROKE	: S	400 ~ 900 mm, every 25 mm		
SLIDING FORCE	* 2	18 kgf { 177 N }		
SLIDING SPEED		4 ~ 6 m / min		
DIMENSIONS	F	62 mm	78 mm	98 mm
	N	67.2 mm	73.2 mm	79.2 mm
	P	24 mm	16 mm	6 mm

* 1: Hydraulic pressure 250 kgf/cm² { 24.5 MPa, 3560 psi }

* 2: Air pressure 4 kgf/cm² { 0.39 MPa, 57 psi }