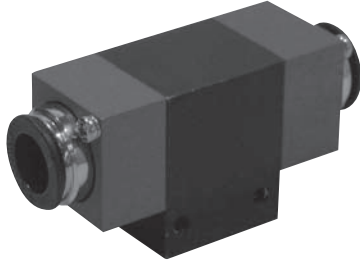


High vacuum flow ejector (push-in type) HFV-25M CONVUM

CONVUM



● Easy mounting compared with standard type

● High vacuum flow

Vacuum flow up to 140 ℓ /min(ANR)

● Application examples

- Small granulated parts (plastic, wood, metals)
- Air / Gas evacuation
- PCB handling
- Small object (pills, chips, bearings)
- Dry powder, cereals
- Transistor ablation process

How to order

HFV - 25M

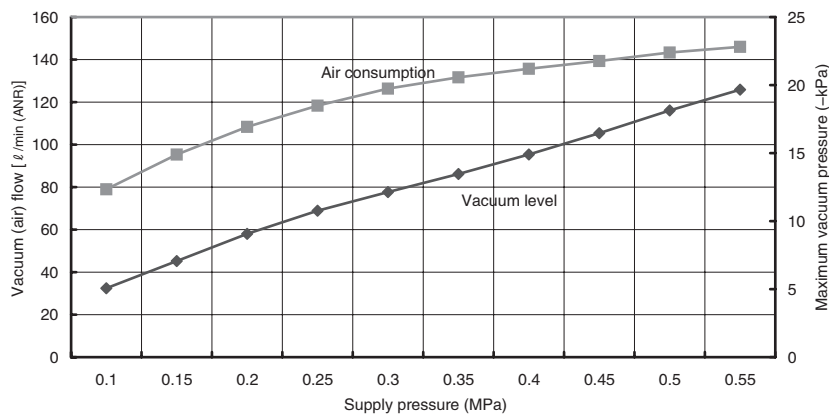
Body size : 25mm

Specifications

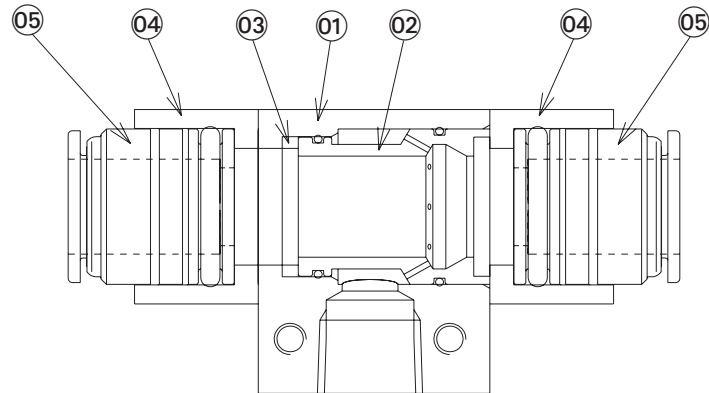
Description	Unit	HFV-25
Fluid		Non-lubricated air / non-corrosive gas
Ambient temperature	℃	0 ~ 55((without freezing)
Operating pressure range	MPa	0.1 ~ 0.6
Nominal pressure	MPa	0.5
Vacuum (air) flow	ℓ /min(ANR)	140
Max. vacuum pressure	kPa	-17.5
Air consumption	ℓ /min(ANR)	170
Mass	g	130

Performance charts

Conditions: below charts are in case of using 11mm tube in exhaust port with 500mm length.



Construction



Parts	Part name	Material
1	Body	Aluminium
2	Nozzle	Aluminium, NBR
3	Cover	Aluminium
4	Push-in connector cover	Aluminium
5	Push-in connector	-

Dimensions

Unit : mm <inch>

