

# Push-in connector vacuum ejector MCA CONVUM



- Light weight

Compact design with resin body

- In-line mounting

Easy mounting. Connect directly tube to push-in ports

- Pad direct mounting

Direct mounting is possible with male threaded port type selection.

CONVUM

## How to order

MCA - ① 10 ② H ③ S - ④ T ⑤ T ⑥ T

① Nozzle diameter	
05	φ0.5
07	φ0.7
10	φ1.0
13	φ1.3

② Max. vacuum pressure	
H	-87kPa
L	-53kPa

③ Nominal pressure	
S	0.5MPa
R	0.35MPa

④ Air supply port: P	
T	φ6 one-touch push-in connector
R	R (BSPT) 1/8

⑤ Vacuum port: V	
T	φ6 one-touch push-in connector
R	R (BSPT) 1/8

⑥ Exhaust port: E	
T	φ6 one-touch push-in connector: nozzle 05, 07
R	φ6 one-touch push-in connector: nozzle 10, 13
Rc	(BSPT) 1/8: nozzle 05, 07
Rc	(BSPT) 1/4: nozzle 10, 13

Note: ①②③ applicable models

①	②	③	
		S	R
05	H	○	x
	L	○	x
07	H	○	○
	L	○	x
10	H	○	○
	L	○	x
13	H	○	x
	L	x	x

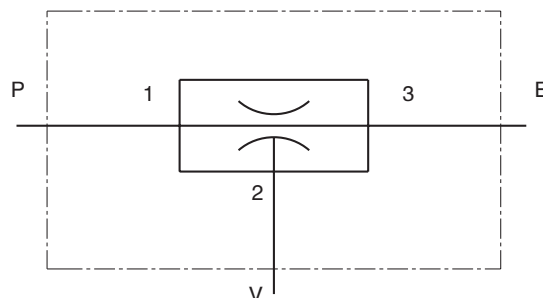
## Option

- Mounting bracket: MCA-B

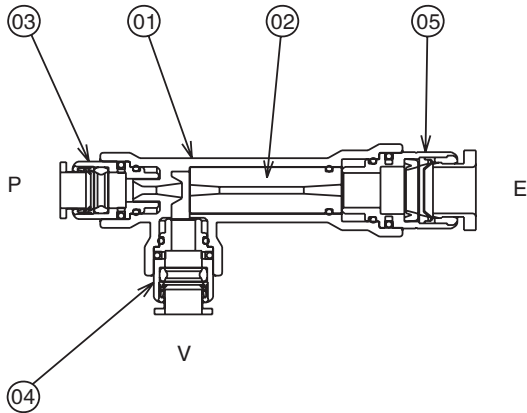
## Specifications

Description	Unit	MCA-05		MCA-07			MCA-10			MCA-13
		HS	LS	HS	LS	HR	HS	LS	HR	HS
Fluid		Non-lubricated air / non-corrosive gas								
Ambient temperature	°C	0 ~ 60(without freezing)								
Operating pressure range	MPa	0.1 ~ 0.6								
Nozzle size	φmm	0.5		0.7			1			1.3
Nominal pressure	MPa	0.5		0.5		0.35	0.5		0.35	0.5
Vacuum (air) flow	ℓ /min (ANR)	5	9	11.5	19.5	10	25	37	21	35
Max. vacuum pressure	kPa	-86	-60	-86	-50	-86	-90	-60	-86	-92
Air consumption	ℓ /min (ANR)	13.2		22.6		24.5	47.5		48.5	79.5
Mass	g	19.1				26.6				

## Symbol



### Construction



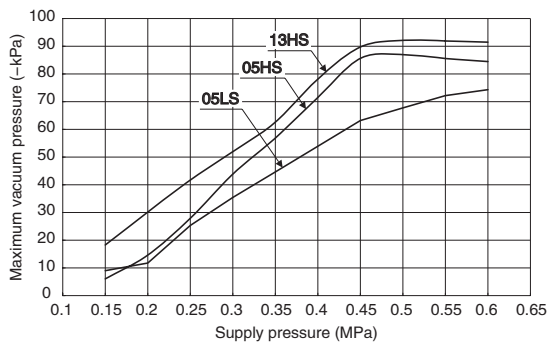
Parts	Part name	Material
1	Body	PA
2	Diffuser	Aluminium
3	Air supply port	-
4	Vacuum port	-
5	Exhaust port	-

CONVUM

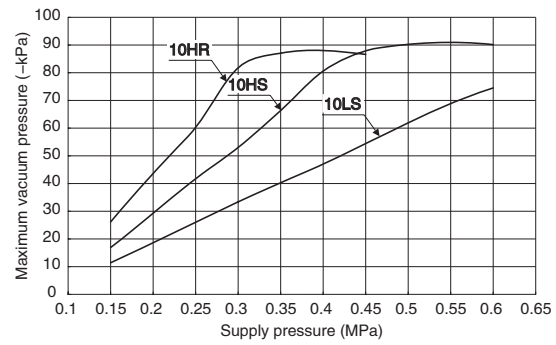
### Performance charts

#### — Maximum vacuum pressure characteristic —

● MCA-05HS · LS, MCA-13HS

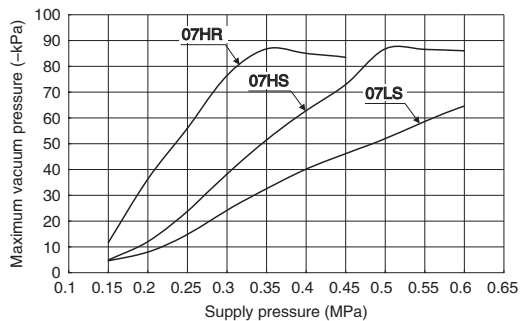


● MCA-10

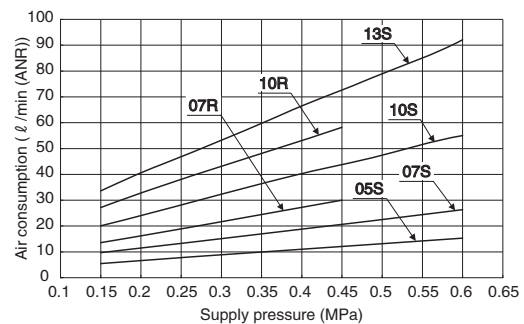


#### — Air consumption characteristics —

● MCA-07

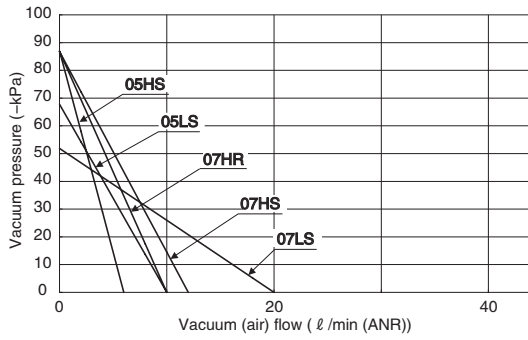


● MCA-05, 07, 10



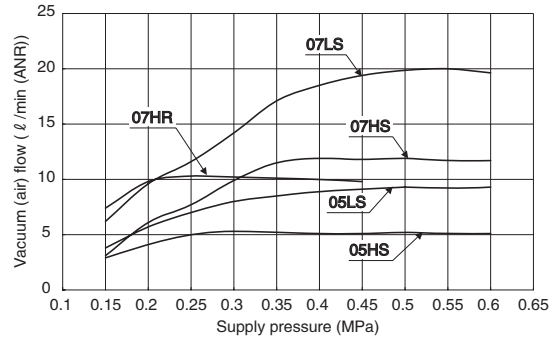
— Vacuum (air) flow - vacuum pressure characteristic —

● MCA-05, 07

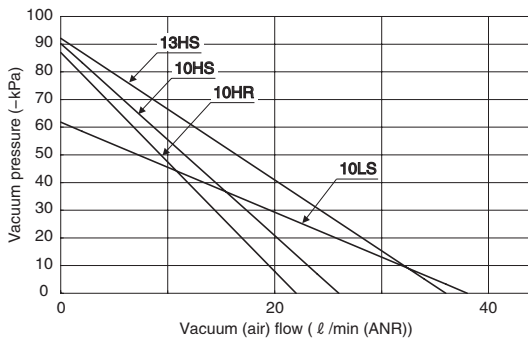


— Maximum vacuum (air) flow characteristic —

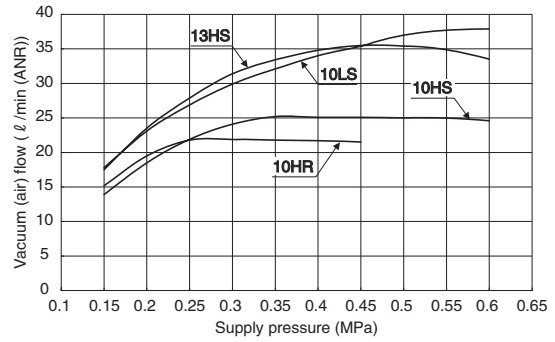
● MCA-05, 07



● MCA-10, 13



● MCA-10, 13



## Dimensions

Unit : mm <inch>

### MCA-05/07

### MCA-10/13

