

Oil-Proof Chuck CGK Series

Basic Long Stroke 3-Jaw Grippers

Key Features

■ **No adjustment for multi-purpose application**

Long motion stroke for multi-purpose use

■ **Compact and powerful**

Light-weight compact body with high grip force

*Oil-Proof Sensors can be mounted



CGK-1.5AS

How To Order

Standard ----- **CGK-1AS**

Option ----- **CGK - 1AS - E40LS2 - Z** ----- CGK-1AS with 2 of E40L non-contact reed switches and special processing

Clean Room & Special Type

Size	
Symbol	
1AS	
1.5AS	
2AS	

Sensor, Quantity			
Symbol	Name	Symbol	Name
E40	Non-Contact 3-Lead	E45	Non-Contact 2-Lead
E40L	Non-Contact 3-Lead	E45L	Non-Contact 2-Lead
E41	Non-Contact 2-Lead	S1	1 Sensor
E41L	Non-Contact 2-Lead	S2	2 Sensors

Option			
Symbol	Name	Symbol	Name
Z	Special Type (Custom)		

For sensor detail ▶ 277P

For option detail ▶ 36P

Specification

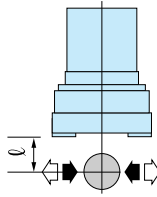
Model	CGK-1AS	CGK-1.5AS	CGK-2AS
	For Layout Drawing ▶ 349P	For Layout Drawing ▶ 350P	For Layout Drawing ▶ 350P
Working Pressure	Pneumatic: 0.3 to 0.7MPa		
Lubrication	Not Required or Turbine Oil Class 1 (ISOVG32)		
Ambient Temperature (°C)	5 to 60		
Total Jaw Stroke (mm)	20	20	40
Cylinder Diameter (mm)	dia.25	dia.44	dia.44
Rod Diameter (mm)	dia.12	dia.16	dia.16
Internal Volume [Reciprocation] (cm ³ /time)	7.9	26.4	52.8
Repeatability (mm)	±0.03		
Weight (kg)	0.88	1.97	2.97

Performance Data

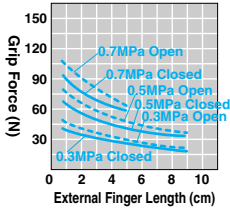
■ Grip Force

The graph shows grip force in opening and closing with effective external finger lengths ℓ from gripper cover surface under different air pressure (MPa)

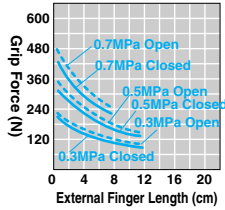
Open (⇐) -----
 Closed (⇒) =====



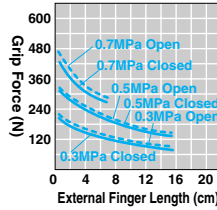
■ CGK-1AS



■ CGK-1.5AS



■ CGK-2AS

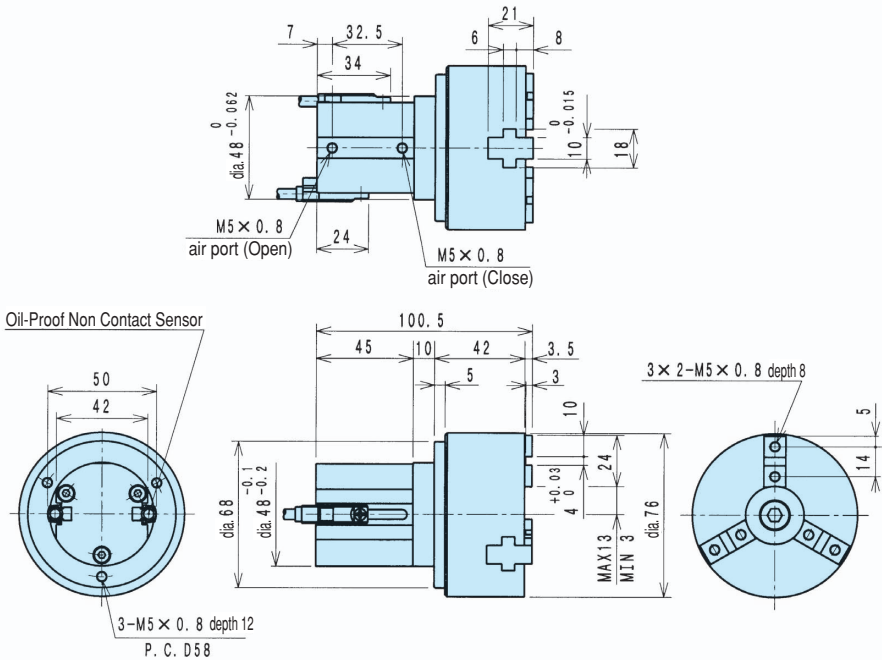


Oil-Proof Chuck CGK Series

Layout Drawing

■ **CGK-1 AS** (Optimal Grip Force 40N to 70N)

CGK-1AS Standard

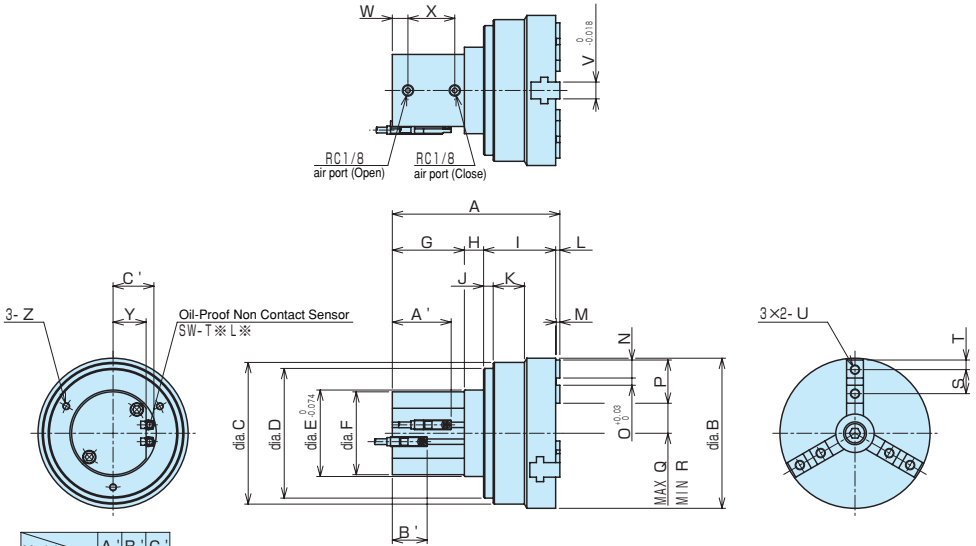


CGK-1AS/1.5AS/2AS

For CAD data, please go to **▶518P**

■CGK-1.5AS • 2AS (Optimal Grip Force 150N to 400N · 150N to 300N)

CGK-□□AS Standard



Model	A	B	C
CGK-1.5AS	39	29	34
CGK-2AS	49	29	34

Model	A	B	C	D	E	F	G	H	I	J	K	L	M	N	O	P	Q	R	S	T	U	V	W	X	Y	Z			
CGK-1.5AS	116.5	100	—	92	70	69	50	16	47	7	—	3.5	3	12.5	5	30	18	8	18	6	M6x1.0	depth 8	14	13	29	27.5	M6x1.0	depth 15	P.C.D.82
CGK-2AS	139.5	125	118	108	72	69	60	16	60	8	26	3.5	3	15	6	36	25	5	20	8	M8x1.25	depth 9	14	13	39	27.5	M8x1.25	depth 15	P.C.D.90

Clean Room & Special Type