

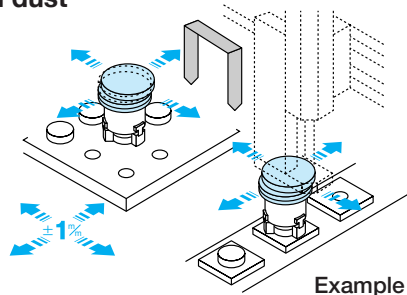
Compact Compliance Device

Key Features

- Automatic alignment function (smooth assembling work, etc.)
- Center Retention (air lock function to return precise returning to the datum position as well as retention of the center).
- Rubber gasket is for protection from dust



QRA-1.5A



Example of Use

How To Order

Standard ----- **QRA - 1.5A**

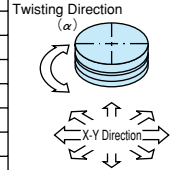
Option ----- **QRA - 1.5A - B1** ----- QRA-1.5A integrated with BHA

Size		Option			
Symbol		Symbol	Specification	Symbol	Specification
1.5A		B1	BHA Integrated Type	C1	CKL Integrated Type
6A		B3	BHA Integrated Type	C2	CKL Integrated Type
40A		B4	BHA Integrated Type	C3	CKL Integrated Type
		B5	BHA Integrated Type	C4	CKL Integrated Type

*All of these options are available only for QRA-1.5A

Specification

Model		QRA-1.5A For Layout Drawing ▶427P	QRA-6A For Layout Drawing ▶427P	QRA-40A For Layout Drawing ▶427P
Working Pressure		Pneumatic: 0.3 to 0.7MPa		
Lubrication		Not Required or Turbine Oil Class 1 (ISOVG32)		
Ambient Temperature (°C)		5 to 60		
Moving Distance	X-Y Direction (mm)	±1	±2	±3.5
	Twisting Direction (α)	±2°	±3.5°	±5°
Repeatability	X-Y Direction (mm)	±0.02		
	Twisting Direction (α)	±0.1°		
Withstand Load	Tensile Direction (N)	760	1350	990
	Compression Direction (N)	4100	5700	2200
Payload Limit (kg)		1.5	6	40
Recoverable Mass (kg)		4.5 (at 0.5MPa)	9 (at 0.5MPa)	40
Weight (kg)		0.29	0.64	2.82



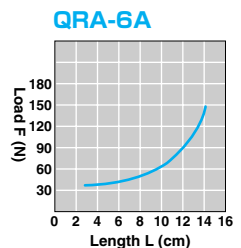
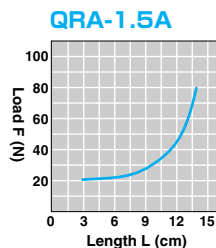
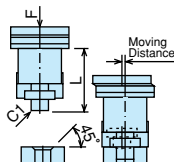
Option Model		QRA-1.5A-B1 For Layout Drawing ▶428P	QRA-1.5A-B3 For Layout Drawing ▶428P	QRA-1.5A-B4 For Layout Drawing ▶429P	QRA-1.5A-B5 For Layout Drawing ▶429P
Supported Hand Model		BHA-01AS	BHA-03AS	BHA-04AS	BHA-05AS
Gripper Specification	Working Pressure	Pneumatic: 0.3 to 0.7MPa			
	Lubrication	Not Required or Turbine Oil Class 1 (ISOVG32)			
	Ambient Temperature (°C)	5 to 60			
	Total Jaw Stroke (mm)	5	9	11	15
	Cylinder Diameter (mm)	dia.12	dia.16	dia.20	dia.25
	Rod Diameter (mm)	dia.6	dia.8	dia.10	dia.12
	Internal Volume [Reciprocation] (cm ³ /time)	0.32	1.58	2.89	6.32
	Gripper Repeatability (mm)	±0.01			
	Gripper Weight (kg)	0.105	0.155	0.27	0.47
Weight (kg)	0.48	0.53	0.65	0.85	

Option Model		QRA-1.5A-C1 For Layout Drawing ▶430P	QRA-1.5A-C2 For Layout Drawing ▶430P	QRA-1.5A-C3 For Layout Drawing ▶431P	QRA-1.5A-C4 For Layout Drawing ▶431P
Supported Chuck Model		CKL-20AS	CKL-25AS	CKL-32AS	CKL-40AS
Gripper Specification	Working Pressure	Pneumatic: 0.3 to 0.7MPa			
	Lubrication	Not Required or Turbine Oil Class 1 (ISOVG32)			
	Ambient Temperature (°C)	5 to 60			
	Total Jaw Stroke (mm)	5	6	8	10
	Cylinder Diameter (mm)	dia.20	dia.25	dia.32	dia.40
	Rod Diameter (mm)	dia.6	dia.8	dia.10	dia.12
	Internal Volume [Reciprocation] (cm ³ /time)	1.8	3.3	7.7	15.6
	Gripper Repeatability (mm)	±0.01			
	Gripper Weight (kg)	0.12	0.19	0.24	0.36
Weight (kg)	0.43	0.50	0.55	0.67	

Robotic Peripheral Devices

Load

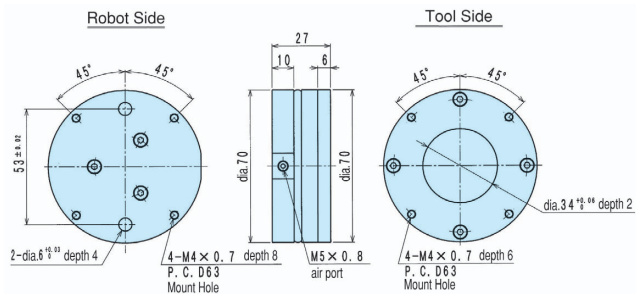
The graph on the right shows load F required for horizontal movement (X-Y direction).



Layout Drawing

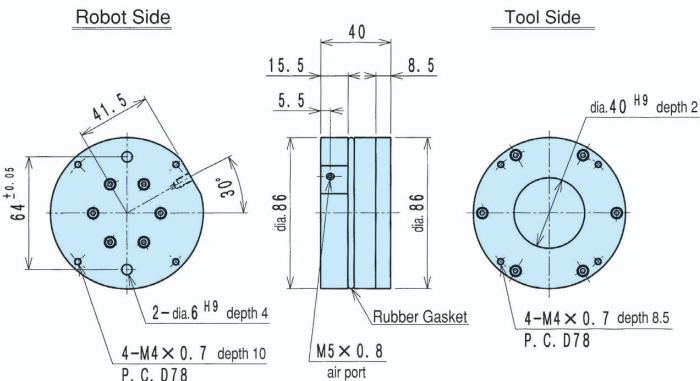
■ QRA-1.5A

QRA-1.5A Standard



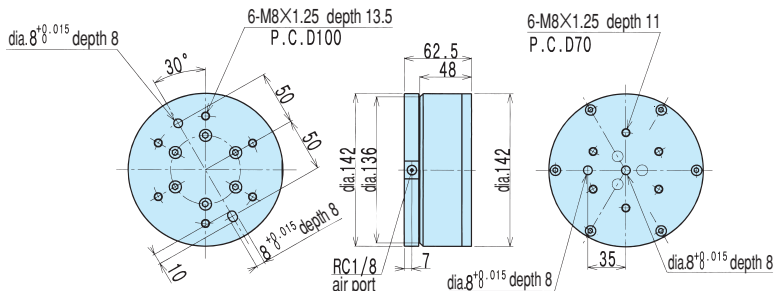
■ QRA-6A

QRA-6A Standard



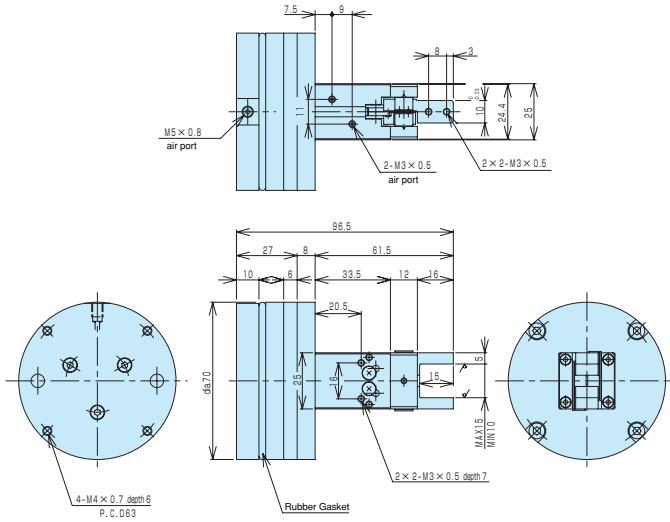
■ QRA-40A

QRA-40A Standard



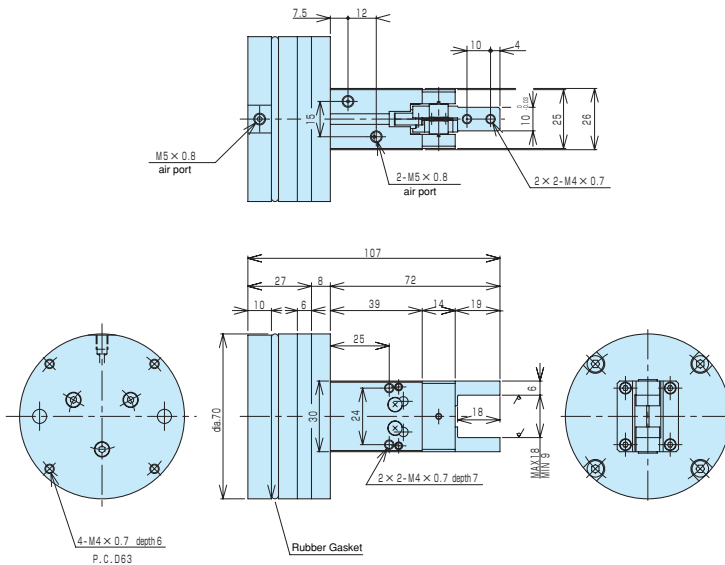
■QRA-1.5A-B1

QRA-1.5A-B1



■QRA-1.5A-B3

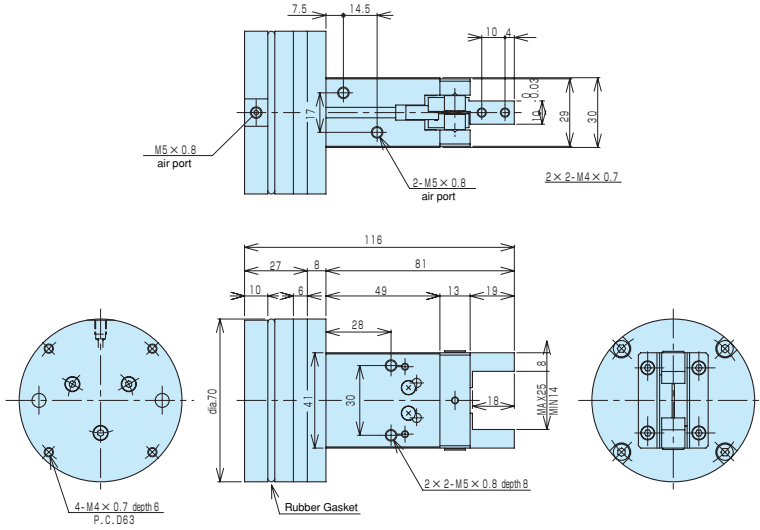
QRA-1.5A-B3



Layout Drawing

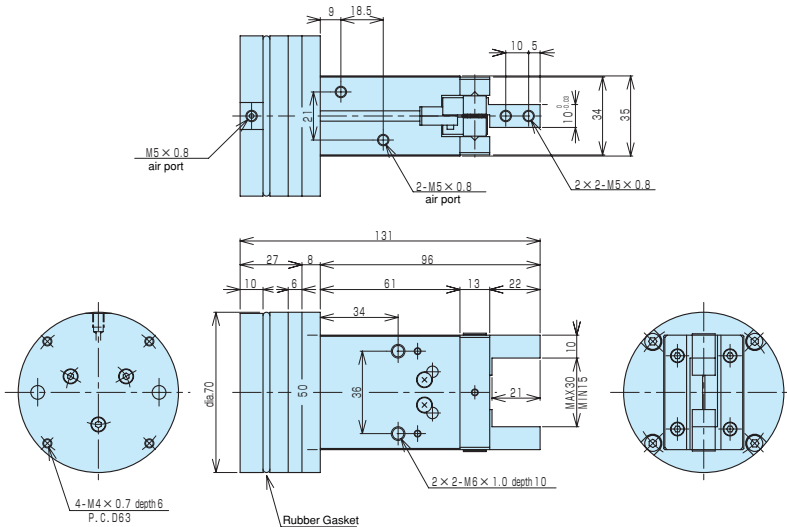
■ QRA-1.5A-B4

QRA-1.5A-B4



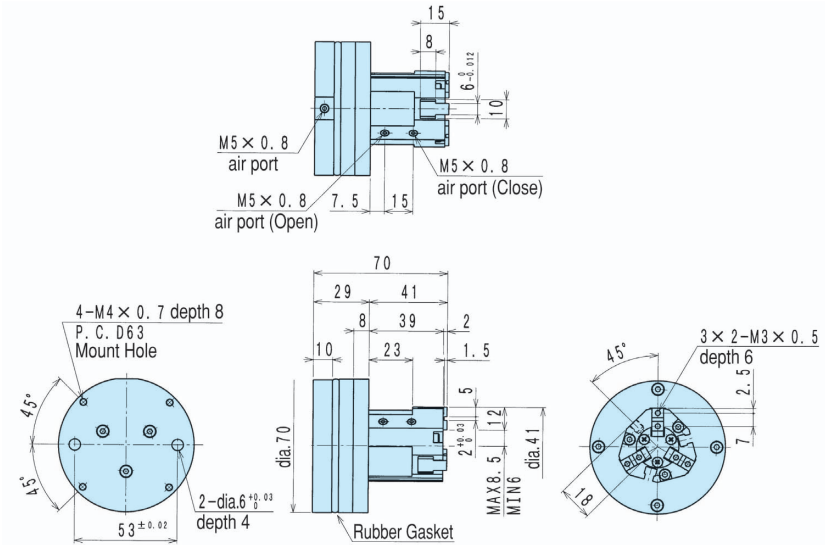
■ QRA-1.5A-B5

QRA-1.5A-B5



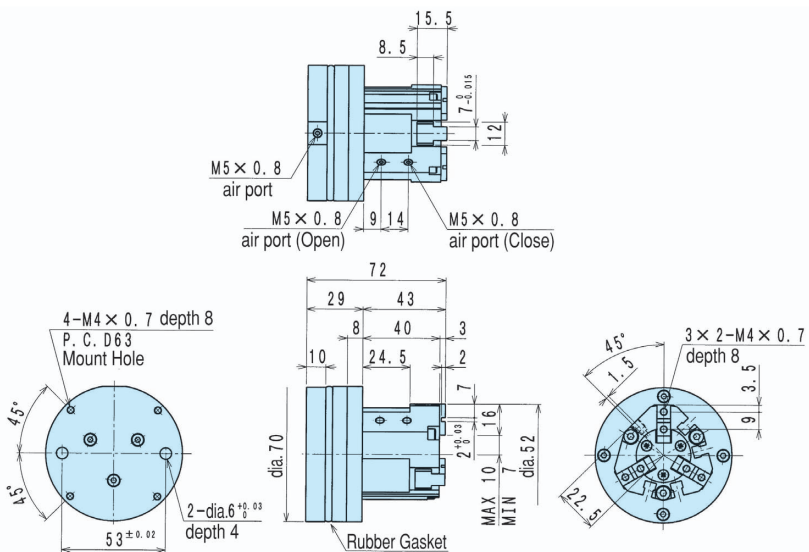
■QRA-1.5A-C1

QRA-1.5A-C1



■QRA-1.5A-C2

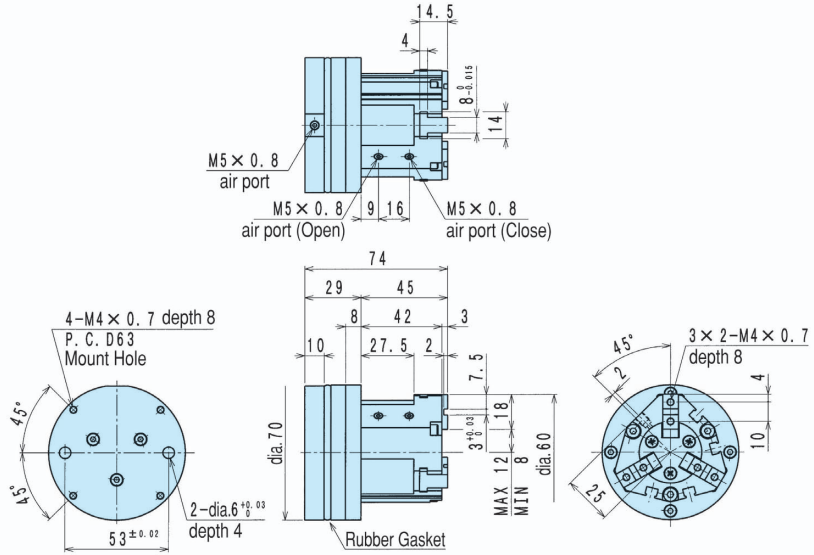
QRA-1.5A-C2



Layout Drawing

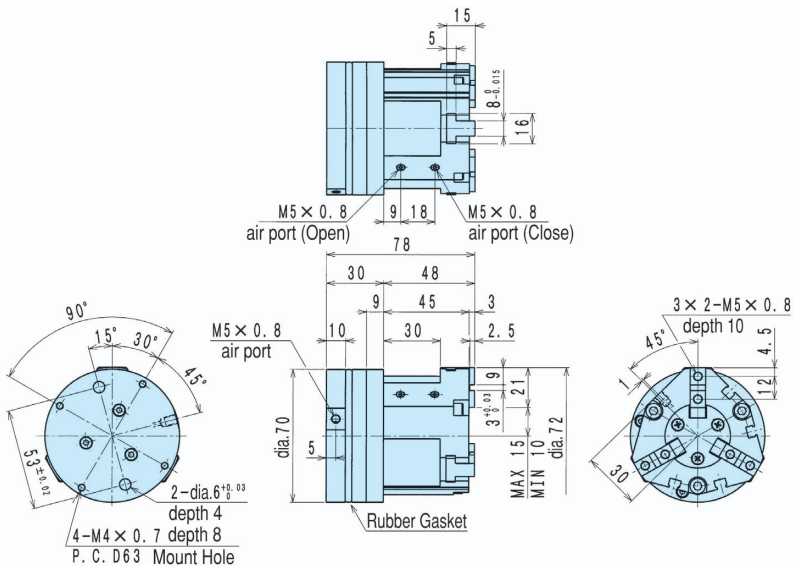
■QRA-1.5A-C3


QRA-1.5A-C3



■QRA-1.5A-C4

QRA-1.5A-C4



 For CAD data, please go to **▶518P**