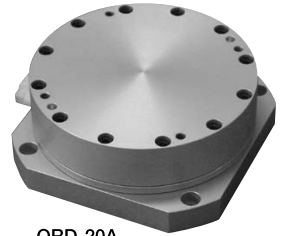


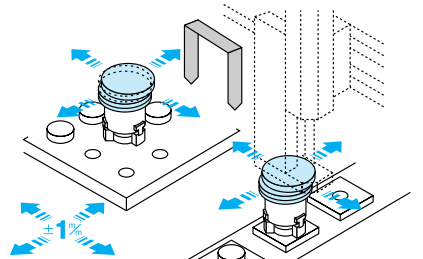
## Alignment Spacer Lockable at Any Position

### Key Features

- Lockable in random (arbitrary) position
- Super smooth sliding
- Clean room types available (special).



QRD-20A



Example of Use

### How To Order

Standard ----- **QRD-6A**

Option ----- **QRD - 6A - Z**

Model	
Symbol	
QRD	

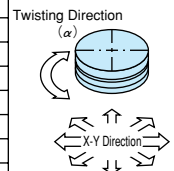
Size	
Symbol	
6A	
20A	

Option	
Symbol	Name
Z	Special Type (Custom)

For option detail  
▶ 36P

### Specification

Model	QRD-6A	QRD-20A
Working Pressure	Pneumatic: 0.3 to 0.7MPa	
Lubrication	Not Required or Turbine Oil Class 1 (ISOVG32)	
Ambient Temperature (°C)	5 to 60	
Range of Movement	X-Y Direction (mm)	±2
	Twisting Direction ( $\alpha$ )	±2°
Retaining Force	X-Y Direction	180N
	Twisting Direction ( $\alpha$ )	2.88N·m
Load Capacity	Tensile Direction (N)	888
	Compression Direction (N)	888
	Bending Moment (N·m)	18
Payload Limit (kg)	6	20
Weight (kg)	0.9	4

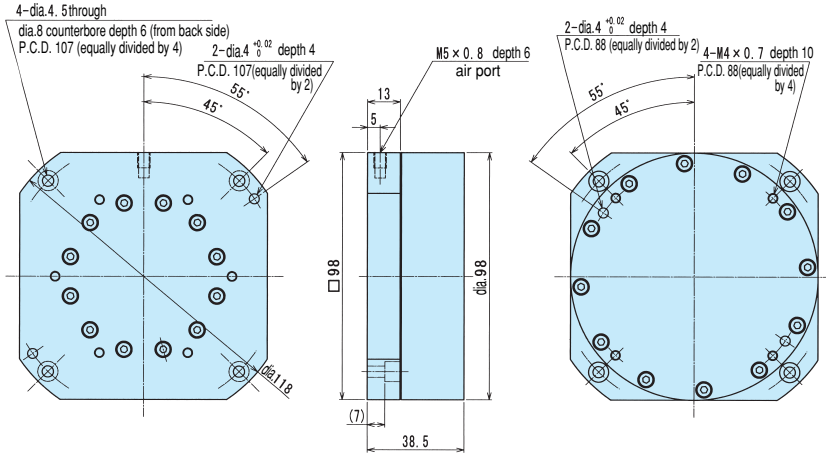


## Layout Drawing

For CAD data, please go to **▶518P**

### QRD-6A

#### QRD-6A Standard



### QRD-20A

#### QRD-20A Standard

