

# UC1 Series 2-Dimensional Conveyor

## Fit in Your Plant.

### Key Features

#### Flexible layout

Useful for horizontal, vertical, or diagonal layout design

#### Curving angle is continuously variable for adjustment

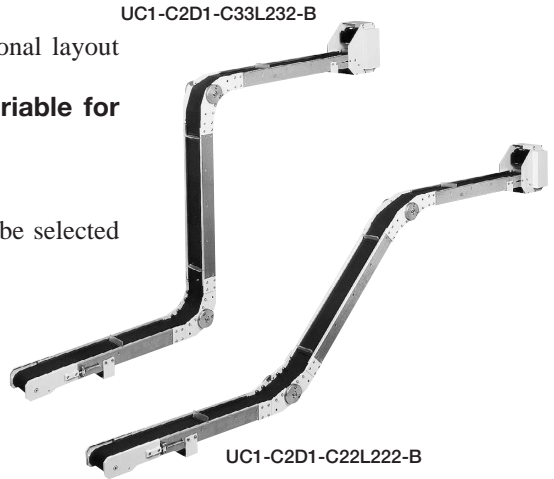
Angle can be adjusted for your needs

#### Various sizes

Layout design of your application can be selected from 3 different models. Each section (corner unit, drive unit, etc.) can also be purchased separately.

#### Groove-structured frame

No additional machining work is necessary thanks to the groove structure that offers easy mounting of various options

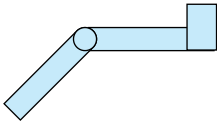


### Specification

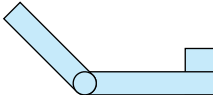
Power Source	AC 100V Single Phase		
Drive Motor	Compact Induction Motor 25W		
Belt	Polyurethane 2-Ply		
Conveyor Internal Width	W=50mm·W=100mm		
Transfer Speed	50Hz (m/min)	12	6
	60Hz (m/min)	14.4	7.2

### Combination Type

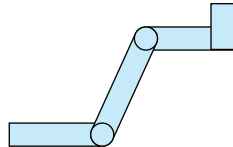
#### Type A



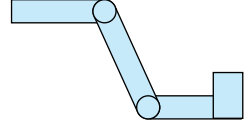
#### Type B



#### Type C



#### Type D



## How To Order

Model ----- **UC1** - **C 2 D 1** - **C 2 3 L 1 3 2** - **S**

Combination Type  
Conveyor Internal Width  
Drive Unit Specification  
Corner Unit Angle  
Distance between Pulleys  
Option

Combination Type	
Symbol	Name
A	Type A
B	Type B
C	Type C
D	Type D
O	No Combination
Z	Special Type (Custom)

Conveyor Internal Width	
Symbol	Specification
1	W=50mm
2	W=100mm

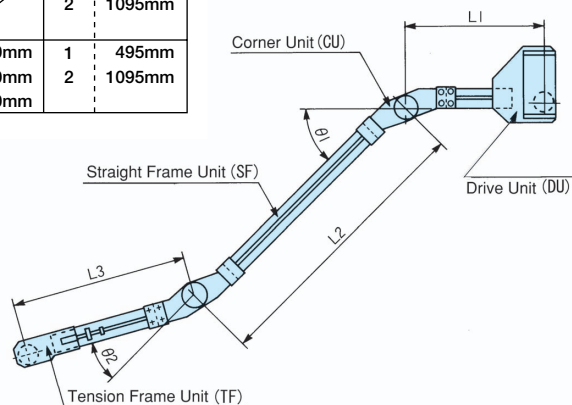
Drive Unit Specification	
Symbol	Specification
1	Motor on Top
2	Motor on Bottom

Combination Type	Corner Unit Angle			
	$\theta 1$		$\theta 2$	
Symbol	Specification	Symbol	Specification	
A Type B Type	1	0° to 45°	0	/
	2	25° to 65°		
	3	45° to 90°		
C Type D Type	1	0° to 45°	1	0° to 45°
	2	25° to 65°	2	25° to 65°
	3	45° to 90°	3	45° to 90°

Distance between Pulleys						
Combination Type	L1		L2		L3	
	Symbol	Specification	Symbol	Specification	Symbol	Specification
A type B type	1	385mm	0	/	1	495mm
	2	735mm			2	1095mm
	3	1235mm				
C type D type	1	385mm	1	420mm	1	495mm
	2	735mm	2	770mm	2	1095mm
	3	1235mm	3	1270mm		

Option	
Symbol	Name
No Symbol	No Option
C	Variable Speed
S	Stand
M	Motor 200V Single Phase
B	Belt with Dividers
Z	Special Type (Custom)

For option detail ▶ 36P



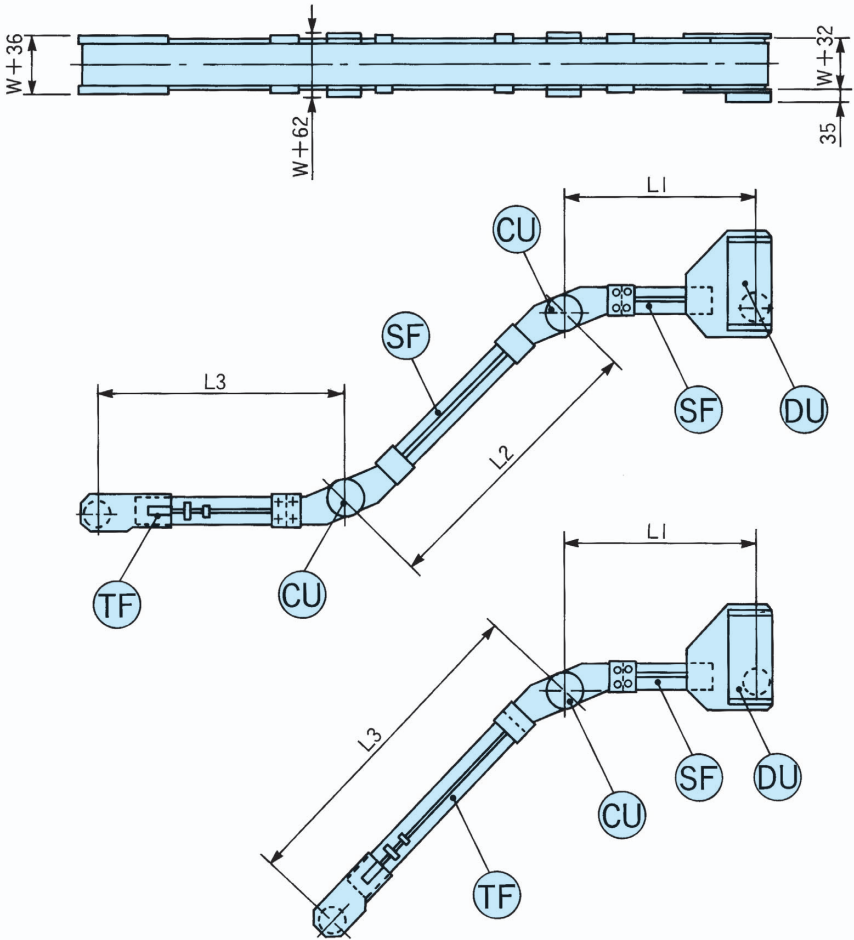
## Example of Model

### UC1-C1D1-C21L121-Z

C-type integrated 2-dimensional conveyor with motor mounted on top. Corner unit angle is available in 25° to 65° and 0° to 45° as shown. The distance between pulleys are 385, 770, and 495. Depending on options (special drawing requests, etc.), there is a special processing or machining work based on the user requests.

# UC1 Series 2-Dimensional Conveyor

## Layout Drawing



Robotic Peripherals  
Devices

Unit	Number	Drive Unit Specification
DU	1	Motor on Top
	2	Motor on Bottom

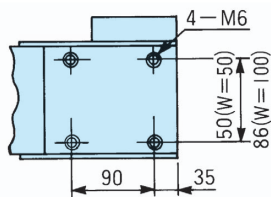
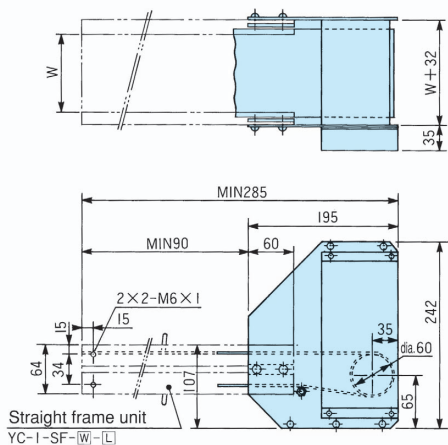
Unit	Number	Corner Unit Angle
CU	1	0° to 45°
	2	25° to 65°
	3	45° to 90°

Unit	Number	Straight Frame Unit Length LS	Number	
			L1	L2
SF	1	150	385	420
	2	500	735	770
	3	1000	1235	1270

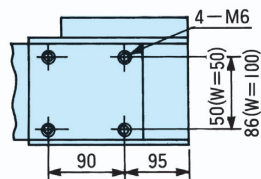
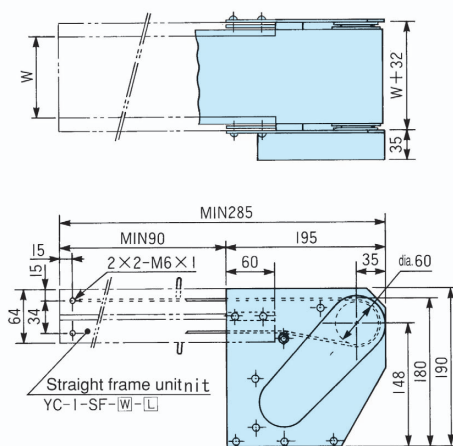
Unit	Number	Tension Frame Unit Length LT	Distance between Pulleys L3
TF	1	400	495
	2	1000	1095

## Drive Unit

### DU1

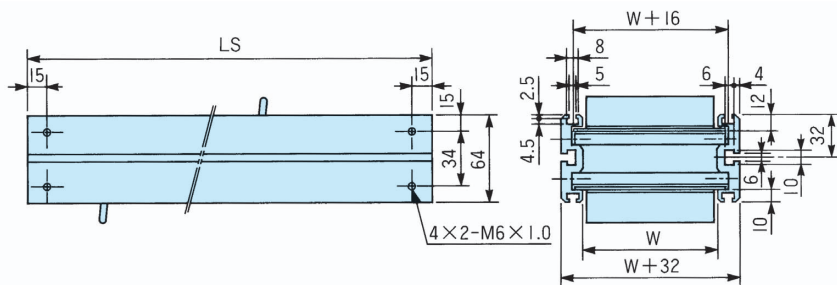


### DU2



## Straight Frame Unit

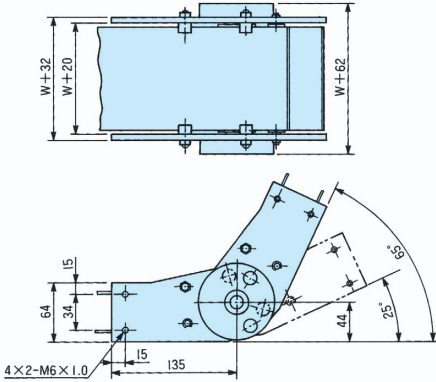
### SF



## Layout Drawing

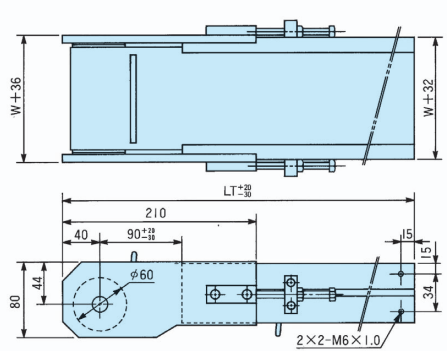
### Curving Unit

CU



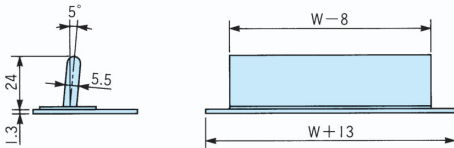
### Tension Frame Unit

TF



### Belt with Dividers

B

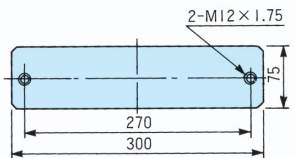
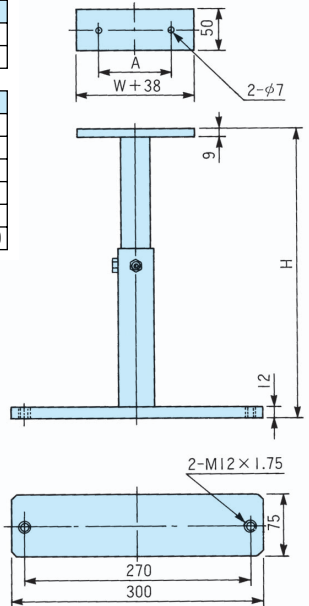


### Stand

S

Symbol	W	A
W1	50	50
W2	100	86

Symbol	H
H1	220~350
H2	300~500
H3	400~700
H4	550~1000
H5	800~1500
H6	1200~2200



\*Please specify the pitch. (Min. Pitch: 50mm)

\*The contact us for other bar shapes.

