




Deep type pads PH series

			Connection type	Top port	Side port	
Pad with locking fitting PH□K φ30 ~ 90	⇒P245		Barb connector (φ65/90 : Female screw)	PHTK	PHYK	
Pad with spring fitting NAPH□S φ30/45 Stroke(mm) 6,15,30 φ65/90 10,30,50	⇒P247		Female screw (Without connector)	NAPHTS-□-□	NAPHYS-□-□	
			Push-in connector	NAPHTS-□-□-O	NAPHYS-□-□-O	
			Barb connector	NAPHTS-□-□-T	NAPHYS-□-□-T	
Pad with spring fitting non-rotation type NAPH□H φ30/45 Stroke(mm) 6,15,30	⇒P249		Female screw (Without connector)	NAPHTH-□-□	NAPHYH-□-□	
			Push-in connector	NAPHTH-□-□-O	NAPHYH-□-□-O	
			Barb connector	NAPHTH-□-□-T	NAPHYH-□-□-T	
Maintenance parts Fitting ⇒P245, 247, 249 Setting screw ⇒P336 Pad ⇒P251			Locking fitting	Barb connector	Reference each page	Reference each page
			Spring type Fitting	Push-in connector	Reference each page	Reference each page
				Barb connector	Reference each page	Reference each page
					Reference each page	Reference each page
			Setting screw		Reference each page	-
			Pad		Reference each page	-
				PHG		

Pad material table ●: Standard

	Material	Identification	Symble	Round pad			
				30	45	65	90
Standard	Nitrile	Black	N	●	●	●	●
	Silicone	Transparent white	S	●	●	●	●

Pad with locking fitting / PHTK · YK

How to order

① ② ③
PH T K - 30 - N

① Vacuum port

T	Top port
Y	Side port

② Pad diameter (mm)

30	φ30
45	φ45
65	φ65
90	φ91

③ Pad rubber material

N	NBR(Nitrile rubber)
S	Silicone rubber

Note) Please consult with us for other material.

Fitting specifications

Description		φ30/45		φ65/90	
Vacuum port type		Top port	Side port	Top port	Side port
Connection type	Without connector	×	×	Rc1/8	Rc1/8
	Barb connector	φ4 × 2.5	×	×	×
φ6 × 4		○ (M5)	○ (M5)	×	×
Fitting attachment type		Male screw	Female screw	Male screw	Female screw

Pad standard specifications

Symbol	Material	Hardness(Hs)	Ambient temperature	Color
N	NBR(Nitrile rubber)	A55/S	-26 ~ 120℃	Black
S	Silicone rubber	A55/S	-60 ~ 250℃	White

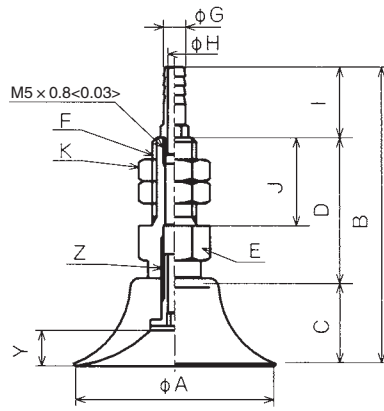
Applicable fitting table

		How to order	Round pad			
			30	45	65	90
Fitting	Top port	PFTK-25-K	○	○		
		PFTK-60-K			○	○
	Side port	PFYK-25-K	○	○		
		PFYK-60-K			○	○
Setting screw	TN-PF-25-M6	○	○			
	TN-PH-65-M10			○	○	

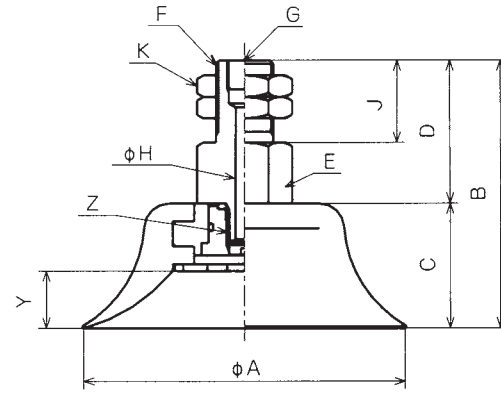
Note) A setting screw is needed for pad attachment.

Dimensions

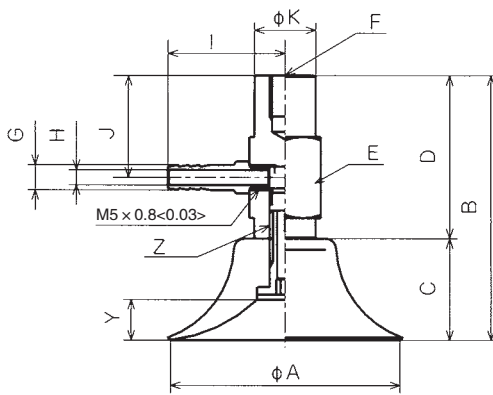
Unit : mm <inch>



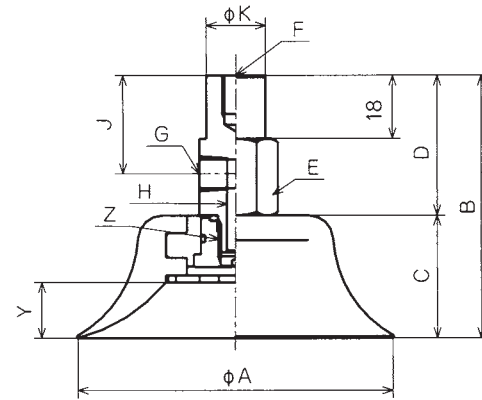
PHTK-30/45



PHTK-65/90



PHYK-30/45



PHYK-65/90

mm

PHTK	A	B	C	D	E	F	G	H	I	J	K	Y	Z	Mass(g)
PHTK-30	30	58	15	32	14H	M10×1.5	5	3	11	20	14H	5	M6×1.0	37
PHTK-45	45	63	20	32	14H	M10×1.5	5	3	11	20	14H	8	M6×1.0	44
PHTK-65	65	69.5	29.5	40	21H	M16×1.5	Rc1/8	5		23	21H	12.5	M10×1.25	142
PHTK-90	90	75	35	40	21H	M16×1.5	Rc1/8	5		23	21H	16	M10×1.25	188

inch

PHTK	A	B	C	D	E	F	G	H	I	J	K	Y	Z	Mass(g)
PHTK-30	1.18	2.28	0.59	1.26	0.55H	M10×0.06	0.2	0.12	0.43	0.79	0.55H	0.2	M6×0.04	37
PHTK-45	1.77	2.48	0.79	1.26	0.55H	M10×0.06	0.2	0.12	0.43	0.79	0.55H	0.31	M6×0.04	44
PHTK-65	2.56	2.74	1.16	1.57	0.83H	M16×0.06	Rc1/8	0.2		0.91	0.83H	0.49	M10×0.05	142
PHTK-90	3.54	2.95	1.38	1.57	0.83H	M16×0.06	Rc1/8	0.2		0.91	0.83H	0.63	M10×0.05	188

mm

PHYK	A	B	C	D	E	F	G	H	I	J	K	Y	Z	Mass(g)
PHYK-30	30	47	15	32	14H	M6 depth 8	5	3	18	20	12	5	M6×1.0	41
PHYK-45	45	52	20	32	14H	M6 depth 8	5	3	18	20	12	8	M6×1.0	48
PHYK-65	65	69.5	29.5	40	21H	M8 depth 11	Rc1/8	5		28	17	12.5	M10×1.25	138
PHYK-90	90	75	35	40	21H	M8 depth 11	Rc1/8	5		28	17	16	M10×1.25	184

inch

PHYK	A	B	C	D	E	F	G	H	I	J	K	Y	Z	Mass(g)
PHYK-30	1.18	1.85	0.59	1.26	0.55H	M6 depth 0.31	0.2	0.12	0.71	0.79	0.47	0.2	M6×0.04	41
PHYK-45	1.77	2.05	0.79	1.26	0.55H	M6 depth 0.31	0.2	0.12	0.71	0.79	0.47	0.31	M6×0.04	48
PHYK-65	2.56	2.74	1.16	1.57	0.83H	M8 depth 0.43	Rc1/8	0.2		1.1	0.67	0.49	M10×0.05	138
PHYK-90	3.54	2.95	1.38	1.57	0.83H	M8 depth 0.43	Rc1/8	0.2		1.1	0.67	0.63	M10×0.05	184

Pad with spring fitting / NAPHTS · YS

How to order

① ② ③ ④
 NAPH T S - 30-6 - N - T

① Vacuum port

T	Top port
Y	Side port

② Pad diameter – stroke (mm)

30-6	φ30-6	65-10	φ65-10
30-15	φ30-15	65-30	φ65-30
30-30	φ30-30	65-50	φ65-30
45-6	φ45-6	90-10	φ90-10
45-15	φ45-15	90-30	φ90-30
45-30	φ45-30	90-50	φ90-50

③ Pad rubber material

N	NBR(Nitrile rubber)
S	Silicone rubber

Note) Please consult with us for other material.

④ Connector

Blank	Without
T	Barb connector
O	Push-in connector

Fitting specifications

Description		φ30/45		φ65/90		
Vacuum port type		Top port	Side port	Top port	Side port	
Connection type	Without connector	M5	M5	Rc1/8	Rc1/8	
	Barb connector	φ4 × 2.5	×	×	×	×
		φ6 × 4	○ (M5)	○ (M5)	×	×
	Push-in connector	φ4 × 2.5	×	×	×	×
φ6 × 4		○ (M5)	○ (M5)	×	×	
Fitting attachment type		Male screw	Male screw	Male screw	Male screw	

Pad standard specifications

Symbol	Material	Hardness(Hs)	Ambient temperature	Color
N	NBR(Nitrile rubber)	A55/S	-26 ~ 120°C	Black
S	Silicone rubber	A55/S	-60 ~ 250°C	White

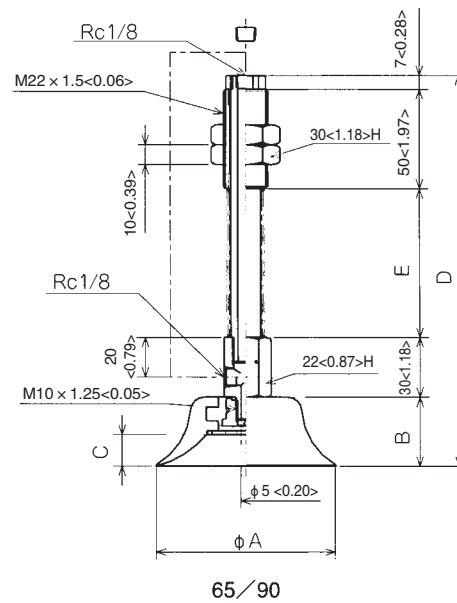
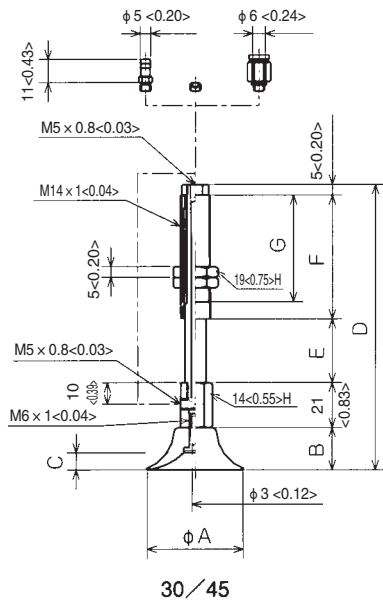
Applicable fitting table

	How to order	Round pad				
		30	45	65	90	
Fitting	Top port	NAPFTS-20B-6-K	○	○		
		NAPFTS-20B-15-K	○	○		
		NAPFTS-20B-30-K	○	○		
		NAPFTS-60-10-K			○	○
		NAPFTS-60-30-K			○	○
		NAPFTS-60-50-K			○	○
	Side port	NAPFYS-20B-6-K	○	○		
		NAPFYS-20B-15-K	○	○		
		NAPFYS-20B-30-K	○	○		
		NAPFYS-60-10-K			○	○
		NAPFYS-60-30-K			○	○
		NAPFYS-60-50-K			○	○
Setting screw	TN-PF-25-M6	○	○			
	TN-PH-65-M10			○	○	

Note) A setting screw is needed for pad attachment.

Dimensions

Unit : mm <inch>



mm

NAPHT/YS	A	B	C	D	E	F	G	F ¹	F ²	Mass(g)
NAPHT/YS-30-6	30	15	5	83	6	36	28	2.45	3.43	69
NAPHT/YS-30-15	30	15	5	92	15	36	28	2.45	4.9	74
NAPHT/YS-30-30	30	15	5	129	30	58	50	2.9	5.88	99
NAPHT/YS-45-6	45	20	8	88	6	36	28	2.45	3.43	73
NAPHT/YS-45-15	45	20	8	97	15	36	28	2.45	4.9	78
NAPHT/YS-45-30	45	20	8	134	30	58	50	2.9	5.88	103
NAPHT/YS-65-10	65	29.5	12.5	136.5	20	/	/	8.82	11.8	331
NAPHT/YS-65-30	65	29.5	12.5	166.5	50			6.76	15.6	365
NAPHT/YS-65-50	65	29.5	12.5	191.5	75			8.33	19.6	392
NAPHT/YS-90-10	90	35	16	142	20	/	/	8.82	11.8	408
NAPHT/YS-90-30	90	35	16	172	50			6.76	15.6	442
NAPHT/YS-90-50	90	35	16	197	75			8.33	19.6	469

inch

NAPHT/YS	A	B	C	D	E	F	G	F ¹	F ²	Mass(g)
NAPHT/YS-30-6	1.18	0.59	0.2	3.27	0.24	1.42	1.1	2.45	3.43	69
NAPHT/YS-30-15	1.18	0.59	0.2	3.62	0.59	1.42	1.1	2.45	4.9	74
NAPHT/YS-30-30	1.18	0.59	0.2	5.08	1.18	2.28	1.97	2.9	5.88	99
NAPHT/YS-45-6	1.77	0.79	0.31	3.46	0.24	1.42	1.1	2.45	3.43	73
NAPHT/YS-45-15	1.77	0.79	0.31	3.82	0.59	1.42	1.1	2.45	4.9	78
NAPHT/YS-45-30	1.77	0.79	0.31	5.28	1.18	2.28	1.97	2.9	5.88	103
NAPHT/YS-65-10	2.56	1.16	0.49	5.37	0.79	/	/	8.82	11.8	331
NAPHT/YS-65-30	2.56	1.16	0.49	6.56	1.97			6.76	15.6	365
NAPHT/YS-65-50	2.56	1.16	0.49	7.54	2.95			8.33	19.6	392
NAPHT/YS-90-10	3.54	1.38	0.63	5.59	0.79	/	/	8.82	11.8	408
NAPHT/YS-90-30	3.54	1.38	0.63	6.77	1.97			6.76	15.6	442
NAPHT/YS-90-50	3.54	1.38	0.63	7.76	2.95			8.33	19.6	469

Note) Symbol F¹ in the table shows a spring load (N) at 0 stroke, and F² at full stroke.

Connector mass(g)

	Tube O.D φ 4	Tube O.D φ 6
T	0.5	1.5
O	3.0	4.0

Pad with spring fitting, non-rotation / NAPFTH · YH

How to order

NAPH ^①T H - ^②30-6 - ^③N - ^④T

① Vacuum port

T	Top port
Y	Side port

② Pad diameter - stroke (mm)

30-6	φ10-3
30-15	φ10-10
30-30	φ10-15
45-6	φ15-3
45-15	φ15-10
45-30	φ15-15

③ Pad rubber material

N	NBR(Nitrile rubber)
S	Silicone rubber

Note) Please consult with us for other material.

④ Connector

Blank	Without
T	Barb connector
O	Push-in connector

Fitting specifications

Description		φ30/45		
Vacuum port type		Top port	Side port	
Connection type	Without connector	M5	M5	
	Barb connector	φ4 × 2.5	×	×
		φ6 × 4	○ (M5)	○ (M5)
	Push-in connector	φ4 × 2.5	×	×
		φ6 × 4	○ (M5)	○ (M5)
Fitting attachment type		Male screw	Male screw	

Pad standard specifications

Symbol	Material	Hardness(Hs)	Ambient temperature	Color
N	NBR(Nitrile rubber)	A55/S	-26 ~ 120℃	Black
S	Silicone rubber	A55/S	-60 ~ 250℃	White

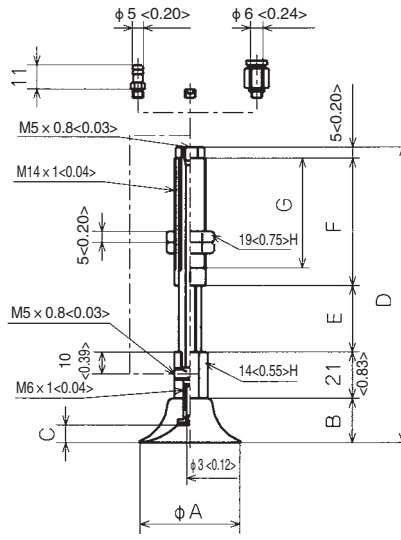
Applicable fitting table

		How to order	Round pad	
			30	45
Fitting	Top port	NAPFTH-20B-6-K	○	○
		NAPFTH-20B-15-K	○	○
		NAPFTH-20B-30-K	○	○
	Side port	NAPFYH-20B-6-K	○	○
		NAPFYH-20B-15-K	○	○
		NAPFYH-20B-30-K	○	○
Setting screw	TN-PF-25-M6	○	○	

Note) A setting screw is needed for pad attachment.

Dimensions

Unit : mm <inch>



30/45

mm

NAPHT/YH	A	B	C	D	E	F	G	F ¹	F ²	Mass(g)
NAPHT/YH-30-6	30	15	5	83	6	36	28	2.45	3.43	67.5
NAPHT/YH-30-15	30	15	5	92	15	36	28	2.45	4.9	72.5
NAPHT/YH-30-30	30	15	5	129	30	58	50	2.9	5.88	96.5
NAPHT/YH-45-6	45	20	8	88	6	36	28	2.45	3.43	71.5
NAPHT/YH-45-15	45	20	8	97	15	36	28	2.45	4.9	76.5
NAPHT/YH-45-30	45	20	8	134	30	58	50	2.9	5.88	100.5

inch

NAPHT/YH	A	B	C	D	E	F	G	F ¹	F ²	Mass(g)
NAPHT/YH-30-6	1.18	0.59	0.2	3.27	0.24	1.42	1.1	2.45	3.43	67.5
NAPHT/YH-30-15	1.18	0.59	0.2	3.62	0.59	1.42	1.1	2.45	4.9	72.5
NAPHT/YH-30-30	1.18	0.59	0.2	5.08	1.18	2.28	1.97	2.9	5.88	96.5
NAPHT/YH-45-6	1.77	0.79	0.31	3.46	0.24	1.42	1.1	2.45	3.43	71.5
NAPHT/YH-45-15	1.77	0.79	0.31	3.82	0.59	1.42	1.1	2.45	4.9	76.5
NAPHT/YH-45-30	1.77	0.79	0.31	5.28	1.18	2.28	1.97	2.9	5.88	100.5

Note) Symbol F¹ in the table shows a spring load (N) at 0 stroke, and F² at full stroke.

Connector mass(g)

	Tube O.D $\phi 4$	Tube O.D $\phi 6$
T	0.5	1.5
O	3.0	4.0

Deep type pad / PHG

How to order

PHG - 30 - N

① Pad diameter (mm)

30	φ30
45	φ45
65	φ65
90	φ91

② Pad rubber material

N	NBR(Nitrile rubber)
S	Silicone rubber

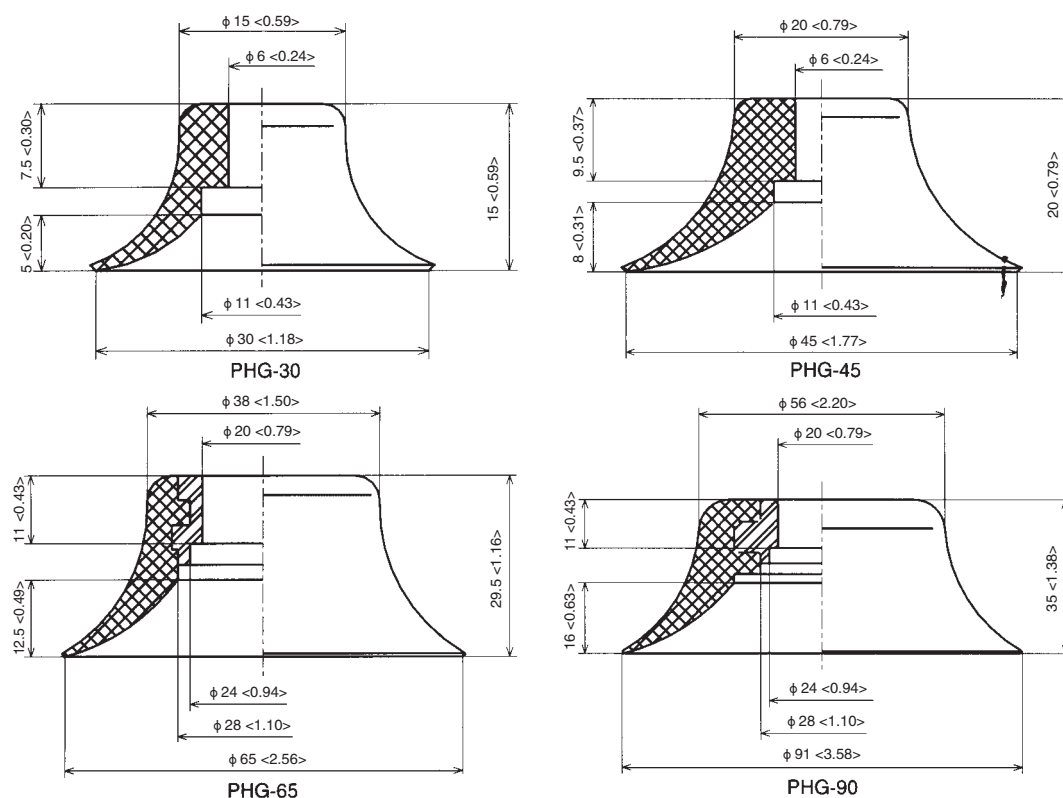
Note) Please consult with us for other material.

Pad standard specifications

Symbol	Material	Hardness(Hs)	Ambient temperature	Color
N	NBR(Nitrile rubber)	A55/S	-26 ~ 120°C	Black
S	Silicone rubber	A55/S	-60 ~ 250°C	White

Dimensions

Unit : mm <inch>



Suction pads