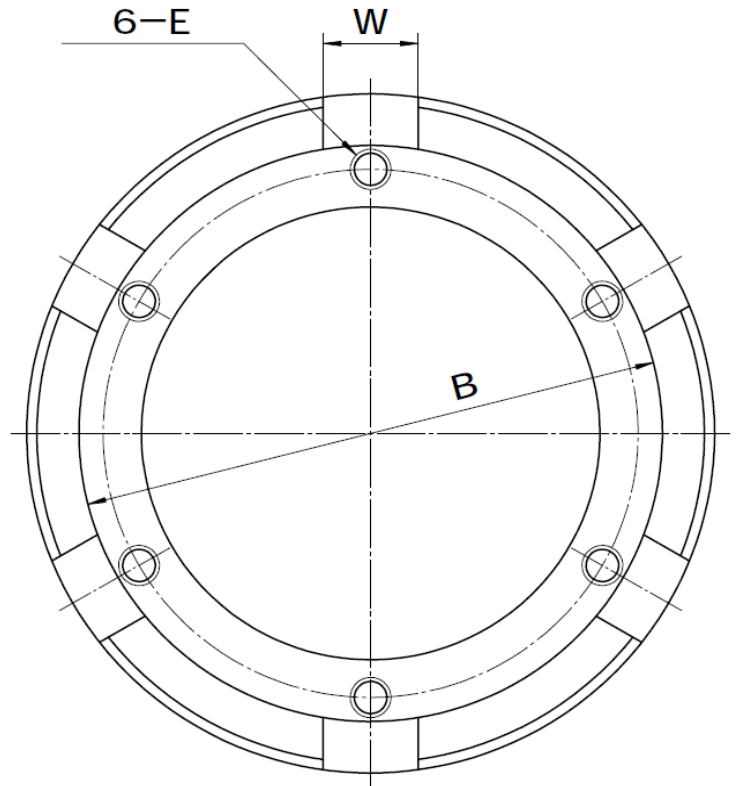
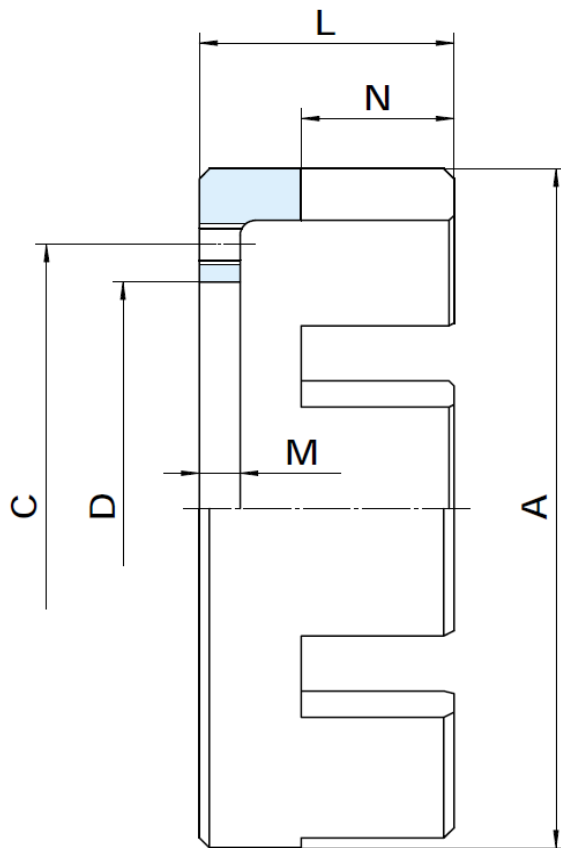


UW

Mechanical Clutch Coupling

Types: 6-25, 6-35, 6-45, 12-58, 12-70, 12-80



OS		6-25	6-35	6-45	12-55	12-70	12-80
Inertia $J \times 10^{-4} (\text{kg} \cdot \text{m}^2)$		7.5	20	55	125	410	598
Radial Dimensions [mm]	A	85	106	135	162	205	230
	B	70.5	89.5	114.5	141	179	204
	C	65	80	105	130	160	185
	D_{H8}	50	65	90	110	135	160
	E	M6	M8	M8	M10	M12	M12
Axial Dimensions [mm]	L	38	48	50	65	80	80
	M	6	8	8	10	12	12
	N	20	30	30	35	42	42
Lug	W	15.7	18.7	18.7	15.5	18.5	18.5
	#	6	6	6	12	12	12
Weight [lbs / kg]		0.95 / 0.43	1.8 / 0.83	2.9 / 1.32	4.9 / 2.2	9.9 / 4.5	11.7 / 5.3

[1" = 25.4mm]