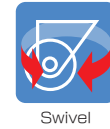


PMS-LBTYPE

• Equipped with a lever type double stopper



Swivel

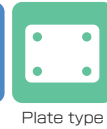


Plate type



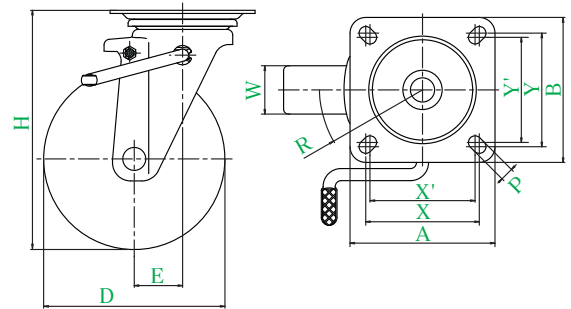
Equipped with a double stopper



Double bearing



PMS-150WBLB(R)



● Description of product number

PMS - 150 WB LB(R)

Right-
Lever type
stopper
Wheel type
Wheel diameter
Bracket type

Bracket = Trivalent unichrome coating

Product number	Wheels										
		Wheel diameter D(mm)	Wheel width W(mm)	Mounting height H(mm)	Mounting base A × B (mm)	Mounting dimensions X × Y (X' × Y') (mm)	Hole diameter P (mm)	Eccentricity E (mm)	Turning radius R (mm)	Allowance load daN(kgf)	Wheel weight (g)
PMS-130	WB LB(R)	130	40	177	110 × 110	90 × 90 (80 × 80)	11	40	138	180(183.6)	1870
	UWB LB(R)		35							250(255.0)	2250
PMS-150	WB LB(R)	150	40	198	120 × 120	94 × 94 (87 × 87)	11	40	138	200(204.0)	2110
	AW LB(R)		42							250(255.0)	2230
	UWB LB(R)		38							300(306.0)	2580
PMS-200	WB LB(R)	200	43	250	144 × 144	120 × 120 (105 × 105)	11.5	56	156	250(255.0)	4025
	AW LB(R)		45							300(306.0)	4050
	UWB LB(R)		42							400(408.0)	4105

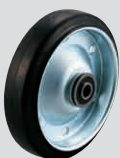
● This caster is equipped with the double stopper that can lock turning of the mounting portion and wheel.

● For casters having wheel diameter of φ 150 and rubber wheel with steel plate wheel assembly (including B), wide wheel can be manufactured.

* Refer to P154 for detailed specifications.

Wheel in use

Refer to P153 for detailed specifications.



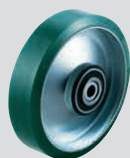
WB

Rubber wheel with steel plate wheel assembly (including B)



AW

Rubber wheel with aluminum wheel assembly (including B)



UWB

Urethane wheel with steel plate wheel assembly (including B)

J

PM

J2

RJ2

SJ

S

E

G

L

SA

H

CAL
-H

M

PL

Silence

SUS
-J2

SUS
-SJ

SUS
-S

SUS
-E

SUS
-H

P

SKY

Equipped
with
adjuster
foot

Special

Easy
lock

Wheels