

# PMS<sub>TYPE</sub>



Swivel



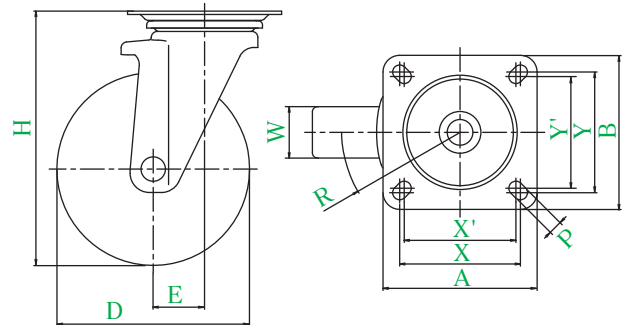
Plate type



Double bearing



PMS-150AW

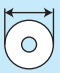
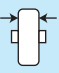
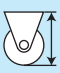


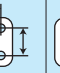
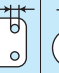
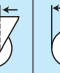




## ● Description of product number

### PMS - 150 AW

Bracket type	Wheel diameter	Wheel type
--------------	----------------	------------

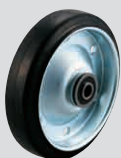
Bracket = Trivalent unichrome coating

Product number		Wheels										
			Wheel diameter D(mm)	Wheel width W(mm)	Mounting height H(mm)	Mounting base A × B(mm)	Mounting dimensions X × Y (X' × Y') (mm)	Hole diameter P(mm)	Eccentricity E(mm)	Turning radius R(mm)	Allowance load daN(kgf)	Wheel weight (g)
PMS-130	WB	Rubber wheel with steel plate wheel assembly (including B)	130	40	177	110 × 110	90 × 90 (80 × 80)	11	40	105	180(183.6)	1640
	UWB	Urethane wheel with steel plate wheel assembly (including B)		35							250(255.0)	2020
PMS-150	WB	Rubber wheel with steel plate wheel assembly (including B)	150	40	198	120 × 120	94 × 94 (87 × 87)	11	40	115	200(204.0)	1880
	AW	Rubber wheel with aluminum wheel assembly (including B)		42							250(255.0)	2000
PMS-200	UWB	Urethane wheel with steel plate wheel assembly (including B)	200	38	250	144 × 144	120 × 120 (105 × 105)	11.5	56	156	300(306.0)	2350
	WB	Rubber wheel with steel plate wheel assembly (including B)		43							250(255.0)	3775
PMS-200	AW	Rubber wheel with aluminum wheel assembly (including B)	200	45	250	144 × 144	120 × 120 (105 × 105)	11.5	56	156	300(306.0)	3800
	UWB	Urethane wheel with steel plate wheel assembly (including B)		42							400(408.0)	3855

● For casters having wheel diameter of  $\phi 150$  and rubber wheel with steel plate wheel assembly (including B), wide wheel can be manufactured.  
\* Refer to P154 for detailed specifications.

## Wheel in use

Refer to P153 for detailed specifications.



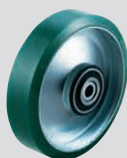
WB

Rubber wheel with steel plate wheel assembly (including B)



AW

Rubber wheel with aluminum wheel assembly (including B)



UWB

Urethane wheel with steel plate wheel assembly (including B)